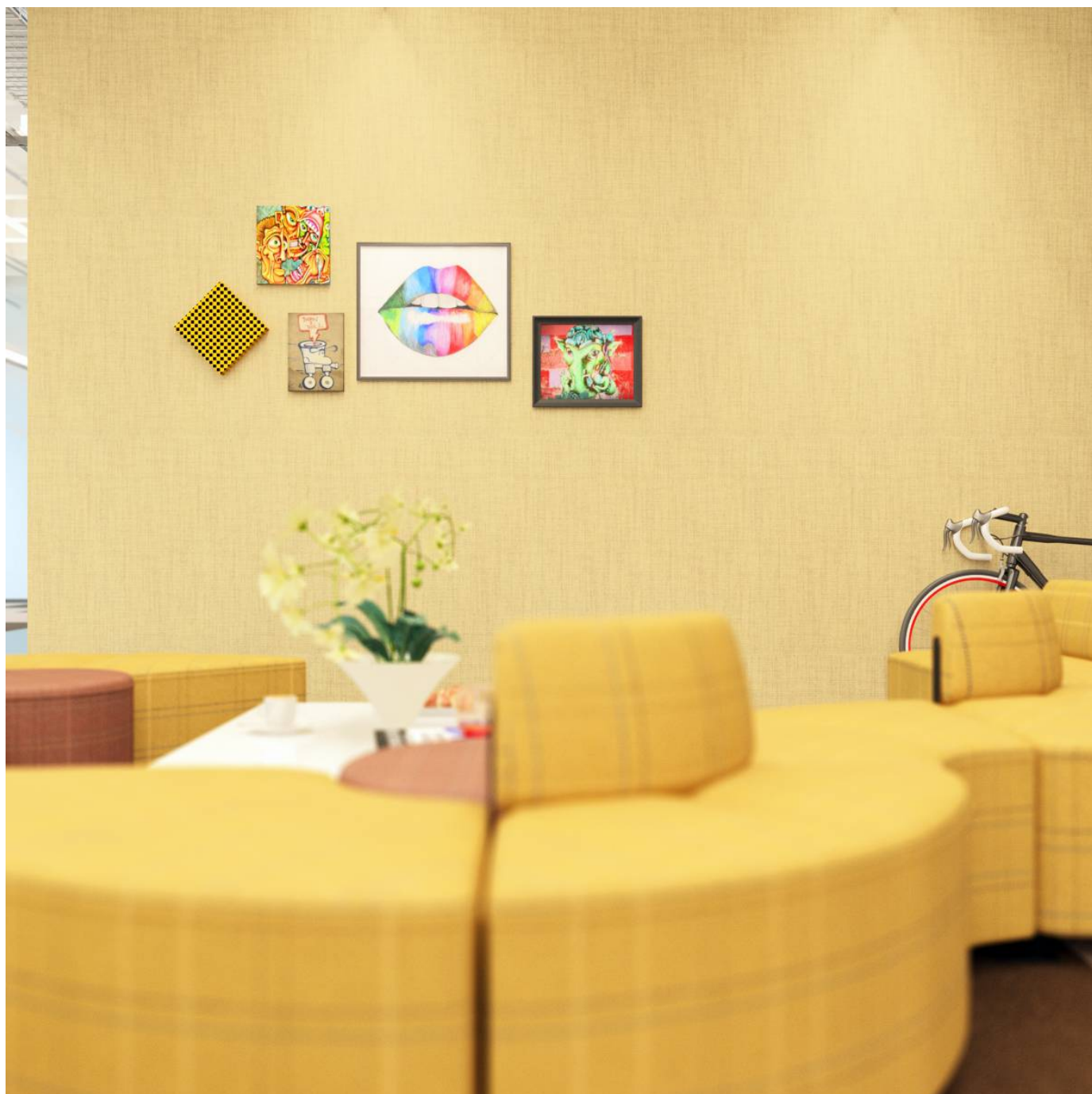


MAGIC COLOUR YELLOWS

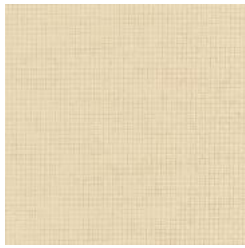
Wallcoverings » Decorative Wallcoverings



Brand: **Bi Mei**

MAGIC COLOUR YELLOWS

Wallcoverings » Decorative Wallcoverings



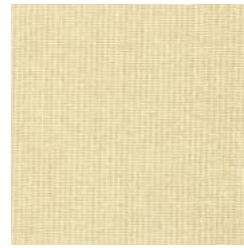
SN101197P DUCK
YELLOW



SN101198P MUSTARD



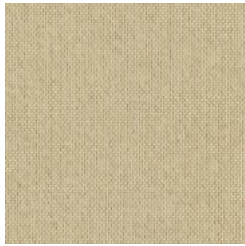
SN101200P BANANA
CREAM



SN101201P MIMOSA



SN101202P JASMINE



SN101203P HOPS



SN101204P APRICOTS



SN101205P DARK
YELLOW



SN101206P GINGER



SN101208P KHAKI



SN101209P
FENUGREEK



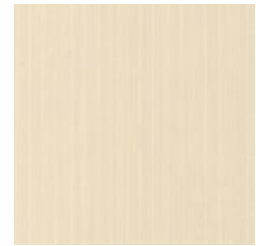
SN101210P HAY



ST101196P SAND



ST101199P PINK GOLD



ST101207P CREAM

MAGIC COLOUR YELLOWS

Wallcoverings » Decorative Wallcoverings

Magic Colour decorative wallcoverings are an environmentally friendly way to add texture. Available in 15 yellow hues.

Description Natural wallpapers are an environmentally friendly way to add texture and beauty to a wide variety of design themes.

Composition Various. See Magic Colour Product Specification Download for details

Environmental Info The materials contained in these wallcoverings are naturally occurring and renewable resources harvested from farms and coloured with water-based inks.

Warranty 2-year warranty. Visit [baresque.com.au/warranty](https://www.baresque.com.au/warranty) for complete details.

Suggested Installation Non-reverse hang / butt join.

If your order contains several numbered rolls of one single item/ reference, please first install the roll with the highest number, and then continue to install the other rolls in sequence, in descending order.

Measure and cut 3 strip lengths. Add 5 to 10 cm to top and bottom of each strip.

For printed patterns, plan your match from the roll before cutting

Mark each strip coming from the roll on the back and hang in the same sequence

Reverse alternate lengths when instructed to do so by label on the roll

Care Instructions Natural wallcoverings should be handled with care, as they are not stain repellent treated.

Remove liquid stains immediately using a clean, white, soft, dry cloth tapping on the wallcovering lightly.

Use a vacuum cleaner to lightly remove any dust that may have collected.

Cleaning with water or detergent is not recommended.

Always test in an inconspicuous area first. If care instructions don't deliver the expected results, cease cleaning method immediately and contact Baresque for assistance.

Additional Comments As this design is made of natural materials, some variation in colour within and across batches is an inherent, unavoidable and enjoyable characteristic of the product. When installed, some panelling effect will be apparent.

MAGIC COLOUR YELLOWS

Wallcoverings » Decorative Wallcoverings

Colour & Finish Options