

JOLT

Wallcoverings » Commercial Wallcoverings



Brand: **Xorel**

1300 306 399

info@baresque.com.au

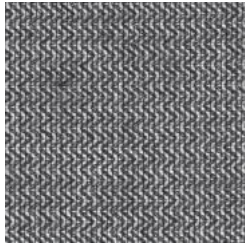
baresque.com.au

1 of 5

JOLT

Wallcoverings » Commercial Wallcoverings

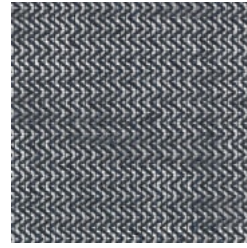
COLOURWAY CARD



4790 20



4790 21



4790 22



jolt-promo-2.jpg

COLOURWAY CARD

JOLT

Wallcoverings » Commercial Wallcoverings

The texture in Jolt comes from a new ribbon process combining multiple yarn colors creating a complex dimensional 3D pattern. Available in 3 colours.

Description	Utilizing our multiple Xorel Yarn styles, the texture in Jolt comes from an entirely new ribbon process that has never been featured before in Xorel. The ribbon combines multiple yarn colours creating a complex and dimensional 3D pattern.
Roll Size	Unbacked - 142cm X-Protect Wall - 132cm X-Protect Sit - 137cm Acrylic Backed - 137cm x Approx 60m - available by the lineal metre. MINIMUM ORDER for X-Protect Sit - 5 lineal metres MINIMUM ORDER for Acrylic Backed - 15 lineal metres
Composition	100% Xorel
Abrasion	N/A
Pattern Repeat Size	1.3cm V / 2.2cm H
Environmental Info	<p>Xorel's high performance does not come at an environmental cost as it achieves high standards for sustainability.</p> <p>All testing/certifying is done by third party independent organizations including:- Scientific Certification Systems (SCS) – Indoor Air Quality (GOLD)- Vincotte – Biobased Content (LEVELS 3/4)- USDA Biobased – Meeting Government Biobased Regulations (PREFERRED)- Cradle to Cradle Institute – Full Lifecycle Assessment (GOLD)- NSF – FACTS certification (NSF 336)</p> <p>Xorel products can also help a project achieve multiple credits under LEED for commercial interiors:Material Sourcing (Rapidly Renewable Content)Indoor Air Quality (SCS Indoor Advantage Gold)Material Optimization (Cradle to Cradle Gold)Material Transparency (Healthy Product Declaration)</p>
Fire Rating	Tested in accordance with AS1530.3 Spread of Flame Index - 0 Smoke Developed Index - 4
Warranty	7-year warranty. Visit baresque.com.au/warranty for complete details.

JOLT

Wallcoverings » Commercial Wallcoverings

Lead Time

- 2-weeks (approx.) from Wednesday, subject to stock availability.
 - Additional 1-week for Western Australia.
 - Express delivery is available subject to a surcharge. Contact Baresque for details and pricing.
-

Care Instructions

Xorel yarns are non-absorbent; dust and stains cannot penetrate them.

Regular maintenance will keep the fabric looking new for many years. Periodic vacuuming will remove dust that may settle between the yarns.

Most stains that dry between the yarns or on the surface can be eliminated by wiping the fabric with a cloth moistened with hot tap water. Some stains may require additional treatment. These stains can be cleaned with a variety of water or solvent based cleaners.

When using solvent based cleaners on paperbacked Xorel fabric, test on a small area first. Residue from these cleaners must be removed with hot water and a clean sponge. After cleaning, towel dry.

Hardened solids can be removed with stiff brush or a sharp-edged instrument without damaging the fabric. However, the brush or sharp instrument should not be used close to seams.

Hospital grade disinfectant cleaners can be safely used on Xorel fabrics. Always follow the directions for the specific brand being used as contact times may vary depending on the product. Diluted bleach solution (up to 40%) can also be used on Xorel for disinfecting purposes.

Always test in an inconspicuous area first. If care instructions don't deliver the expected results, cease cleaning method immediately and contact Baresque for assistance.

JOLT

Wallcoverings » Commercial Wallcoverings

Colour & Finish Options