

NOCTURNAL DANCE

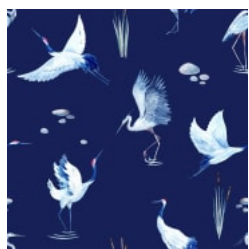
Digital Print » Line and Geometrics



Brand: **Seraphic**

NOCTURNAL DANCE

Digital Print » Line and Geometrics



DEEP WATER



HENNA RED



MIDNIGHT

NOCTURNAL DANCE

Digital Print » Line and Geometrics

Nocturnal Dance displays a conversational pattern with swan motif, that's available in 3 colours. Seraphic Digital Print is customizable in any surface

Description	If you can dream it, we can achieve it with Seraphic's High Performance Digital Print Finishes. The sky is the limit with Seraphic. We have a committed and experienced team ready for any challenge you throw at us. A dedicated internal digital Project Manager is on hand to ensure your dreams come to life just as expected.
Composition	Seraphic Digital print is available on substrates that cover Wallcoverings, Acoustics, Cladding and Table Tops. Check out the Seraphics Substrates page or brochure on the DOWNLOADS tab for more details.
Pattern Repeat Size	Repeatable - Yes
Warranty	2-year warranty. Visit baresque.com.au/warranty for complete details.
Lead Time	<p>A wide variety of Seraphic substrates are held in stock in Australia. The leadtime for print and delivery of these will be 1-2 weeks. Other substrates will be brought in from overseas with the leadtime for these being 4-5 weeks.</p> <p>Plus one week for deliveries to Western Australia.</p> <p>All leadtimes are subject to substrate availability and project size.</p>
How to Specify	1. Pick your design 2. Pick your substrate Baresque will then make up a sample for you to sign off along with a shop drawing.
Additional Comments	Samples of your selected pattern / substrate combination are shipped next day by Express Post. The swatch image shows a 600mm x 600mm section. Pattern sizing can be easily adjusted. Substrate composition, dimensions, fire results and installation method vary across the wide range of substrates available. Checkout the Seraphic Substrates page or brochure on the DOWNLOADS tab for more details.

NOCTURNAL DANCE

Digital Print » Line and Geometrics

Colour & Finish Options