

# LUCERE BOARD COLOURS

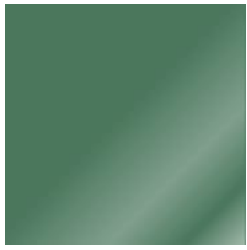
Acrylics, Resin & Laminates » Acrylics/Resin



Brand: **Lucere**

# LUCERE BOARD COLOURS

Acrylics, Resin & Laminates » Acrylics/Resin



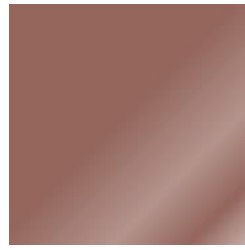
MOSS VALE



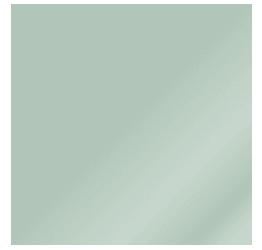
DESIGN DELIGHT



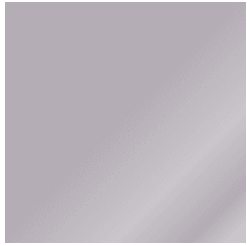
LEADMAN



CHOCOLATE



MISTY MORNING



MADAME MAUVE



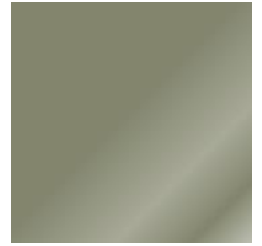
LIME



WATER RACEWAY



SUMMER WATERS



SIMPSON SURPRISE



NEVERLAND



PORCELLAN



LEMON DELICIOUS



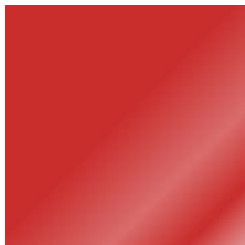
BLUE VEIL



BLACK



BIRDIE



HOT LIPS



LICKEDY LICK



QUINCE JELLY



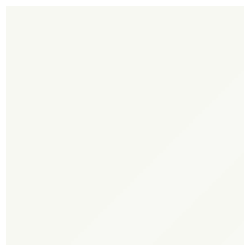
BUFF IT



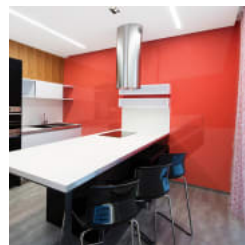
BALSA STONE



BANNERET



VIVID WHITE



# LUCERE BOARD COLOURS

Acrylics, Resin & Laminates » Acrylics/Resin

---



# LUCERE BOARD COLOURS

Acrylics, Resin & Laminates » Acrylics/Resin

Lucere is a back coloured, gloss resin suitable for many different indoor applications where the weight and breakability of glass is problematic.

✓ **Bleach Cleanable**

✓ **Thermoformable**

✓ **Unique Depth**

## Description

Fully refinishable resin with soft touch.

### FEATURES

- \* Bleach cleanable
- \* Thermoformable
- \* Unique Depth

## Dimensions

Sheet Size

2440mm x 1220mm - 3mm, 6mm, 10mm, 15mm, 20mm, 30mm  
3000mm x 1000mm - 3mm, 6mm, 10mm

## Composition

Resin

## Finishes

Gloss

## Environmental Info

Easily recycled. Contact your nearest Baresque branch for details.

## Lead Time

- 2-weeks (approx.) from Wednesday, subject to stock availability.
- Additional 1-week for Western Australia.
- Express delivery is available subject to a surcharge. Contact Baresque for details and pricing.

## Suggested Installation

An expansion gap of 1mm per 1 meter of product should be allowed for when setting out your sheets.

Adhere to substrate using either a neutral cure silicone or non-solvent based contact adhesive.

**DO NOT USE SOLVENT BASED CONTACT ADHESIVES.**

An expansion gap of 1mm per 1 meter of product should be allowed for when setting out your sheets.

## Fabrication Techniques

Standard wood-working tools. See Baresque Lucere Handling, Fabrication and Installation Guidelines.

## How to Specify

1. Colour
2. Sheet size
3. Thickness

# LUCERE BOARD COLOURS

Acrylics, Resin & Laminates » Acrylics/Resin

---

## Care Instructions

Do not use glass cleaning products, acetone, gasoline, benzene, lacquer thinner, chlorinated solvents, gritty abrasive scouring compounds, or alkaline cleaners to clean Lucere as damage to the sheet will occur.

Use warm water, mild detergent, and a soft sponge, cloth, or chamois to clean Lucere

Surface contamination may be cleaned using kerosene, hexane, or aliphatic naphtha, or any acrylic cleaner, such as Novus.

Always follow manufacturers recommended use and safety procedures

Remove any oily residue left behind from solvent cleaning with detergent and water

Do not use squeegee, scraper, or synthetic rags that may scratch.

When cleaning, never scrub. Gently wipe surface with a soft scratch free cloth.

Always test in an inconspicuous area first. If care instructions don't deliver the expected results, cease cleaning method immediately and contact Baresque for assistance.

For refinishing, contact Baresque for details

---

## Customisable

Yes. 10 sheet minimum

---

## Additional Comments

If Lucere Board is being fabricated into drop down edges or carved into for signage, a 1mm PVC protective layer can be added to the back of the panel at an additional cost.

---

# LUCERE BOARD COLOURS

Acrylics, Resin & Laminates » Acrylics/Resin

---

## Colour & Finish Options