

SHADOW DAMASK

Wallcoverings » Commercial Wallcoverings



Brand: **Genon**

SHADOW DAMASK

Wallcoverings » Commercial Wallcoverings

COLOURWAY CARD

COLOURWAY CARD



W2-SK-01 ETHEREAL
WHITE



W2-SK-02 ETHEREAL
STEEL



W2-SK-03 GOLDEN
GREY



W2-SK-04 GILT



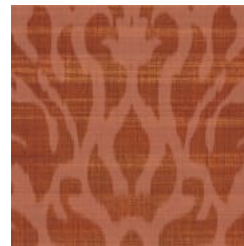
W2-SK-05 TOASTY
MAPLE



W2-SK-06 BLACK
PEARL



W2-SK-07 PALMETTO



W2-SK-08 SPICED
CIDER

SHADOW DAMASK

Wallcoverings » Commercial Wallcoverings

Shadow Damask is a Type II wallcovering with a damask pattern that's available in 8 colourways.

✓ **Low VOC**

✓ **Bleach Cleanable**

✓ **Coordinate available**

✓ **Anti-Microbial**

Description

Shadow Silk and Shadow Leaves are proud to welcome their newest partner, Shadow Damask.

Continuing in the spirit of this series, Shadow Damask coordinates with Shadow Silk, offering a striking scale and surprising colour combinations.

The alter-ego of the traditional damask feels fresh off the runaway with intense colour energy inspired by fashion house backdrops; Spiced Cider features a brand-new Shadow Silk coordinate.

Elegant options strike the perfect balance of modern tradition with colorways such as Ethereal Steel, Gilt, and Golden Grey. Shadow Damask, relevant history

Roll Size

137cm wide x 27.4m - Available by the lineal metre

Composition

Type II Wallcovering

Osnaburg Backing

Pattern Repeat Size

132cm V x 60.96cm H

Sustainability

- Low VOC
- 10% Recycled content
- Non-Phthalate
- EPD / HPD

It is the policy of J. Josephson, Inc. to ensure that the activities, products, and services carried out here will be appropriate toward meet-and-exceed compliance with relevant environmental legislation and regulations and other requirements to which it subscribes.

We recognize the interrelationship of productive efficiency with environmental impact. Therefore, while our commitment to the customer is still a top priority, we will also work toward continuous improvement and pollution prevention. To achieve this, we will also set and review environmental objectives and targets within the framework of a documented, implemented and effectively communicated program.

SHADOW DAMASK

Wallcoverings » Commercial Wallcoverings

Fire Rating Tested in accordance with AS ISO 9705 2003 for the purpose of determining the Group Number classification as required by the Building Code of Australia for the control of fire spread on interior wall and ceiling linings.

The result achieved was:
Classification - Group 2
Specific Extinction - Less than 250m²/kg

Warranty 5-year warranty. Visit [baresque.com.au/warranty](https://www.baresque.com.au/warranty) for complete details.

Lead Time

- 2-weeks (approx.) from Wednesday, subject to stock availability.
- Additional 1-week for Western Australia.
- Express delivery is available subject to a surcharge. Contact Baresque for details and pricing.

Suggested Installation Reverse hang / overlap and double cut.
Baresque recommends and supply Roman brand adhesives and primers.

Care Instructions Always use a clean, white, soft cloth.
Use cloth with any of the following in preferred order of us:

- 1: Clear warm water
- 2: Mild solution of liquid detergent and warm water
- 3: Isopropyl Alcohol (a.k.a. rubbing alcohol)
- 4: Do not use solvent based cleaning agents, lacquer thinners, nail polish remover, pine oil or cleaning agents containing bleach, which may cause discoloration over a period of time.
- 5: It is recommended that cleaning be done with a natural sponge. A cloth or towel should only be used to tamp dry (not rub). Do not use manmade (i.e. polyester) sponges.

SHADOW DAMASK

Wallcoverings » Commercial Wallcoverings

Colour & Finish Options