

BEND THE RULES

Wallcoverings » Commercial Wallcoverings



Brand: **York**

Collection: **Studio Source**

1300 306 399

info@baresque.com.au

baresque.com.au

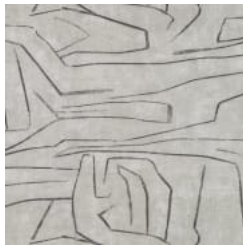
1 of 5

BEND THE RULES

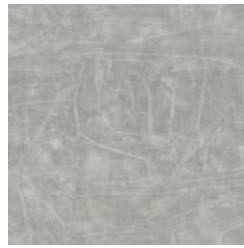
Wallcoverings » Commercial Wallcoverings



COLOURWAY CARD



BX4940 CHISEL



BX4941 SWAY



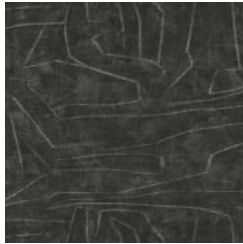
BX4942 FLEX



BX4943 CONTORT



BX4944 DETOUR



BX4945 ONYX

BEND THE RULES

Wallcoverings » Commercial Wallcoverings

Bend the rules is a Type II wallcovering with an abstract textured design that's available in 6 colourways.

✓ **Low VOC**

✓ **Bleach Cleanable**

✓ **Moisture Repellant**

✓ **Anti-Microbial**

Description Inspired by chalk marks found on vintage industrial cloth, the lines and arcs create a textural canvas that evokes the sophisticated design of a modern abstract painting.

Roll Size 137cm wide X 91m- Available by the lineal metre

Material Vinyl face on a non-woven backing 20oz (452 g/m²)

Pattern Repeat Size 64cm X 64cm

Sustainability

- Low Voc
- Water-Based inks
- Member of the US Green Building Council
- York commercial grade vinyl contains attributes to contribute towards LEED building certification
- Certified to NSF/ANSI 342 Sustainability Assessment for Wallcovering Products

Fire Rating Tested in accordance with AS ISO 9705 2003 for the purpose of determining the Group Number classification as required by the Building Code of Australia for the control of fire spread on interior wall and ceiling linings.

The result achieved was:
Classification - Group 2
Specific Extinction - Less than 250m²/kg

Warranty 5-year warranty. Visit [baresque.com.au/warranty](https://www.baresque.com.au/warranty) for complete details.

Lead Time

- 2-weeks (approx.) from Wednesday, subject to stock availability.
- Additional 1-week for Western Australia.
- Express delivery is available subject to a surcharge. Contact Baresque for details and pricing.

BEND THE RULES

Wallcoverings » Commercial Wallcoverings

Suggested Installation

Non reverse hang/overlap double cut.

Baresque recommends and supplies Roman brand adhesives and primers.

Care Instructions

Always use a clean, white, soft cloth.

Use cloth with any of the following in preferred order of us:

1: Clear warm water

2: Mild solution of liquid detergent and warm water

3: Isopropyl Alcohol (a.k.a. rubbing alcohol)

Remove any detergent with a clean, damp cloth. Gently pat dry.

For more difficult stains, dampen a soft white cloth with a solution of household bleach (10% bleach / 90% water). Rub gently.

Rinse with a water dampened cloth to remove bleach concentration.

DO NOT USE solvent based or concentrated abrasive cleaning agents, lacquer thinners, nail polish remover as these may cause discolouration over a period of time.

Always test in an inconspicuous area first. If care instructions don't deliver the expected results, cease cleaning method immediately and contact Baresque for assistance.

BEND THE RULES

Wallcoverings » Commercial Wallcoverings

Colour & Finish Options