

# MINDFUL

Wallcoverings » Commercial Wallcoverings



Brand: **York**

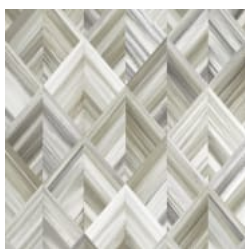
Collection: **Candice Olson Couture**

# MINDFUL

Wallcoverings » Commercial Wallcoverings



COLOURWAY CARD



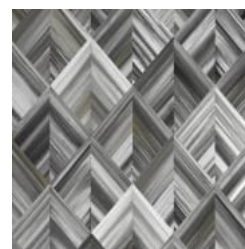
MCO2332 DESERT



MCO2333 OXYGEN



MCO2334 MIST



MCO2335 EBONY

# MINDFUL

Wallcoverings » Commercial Wallcoverings

Mindful is a 137cm wide mylar wallcovering with a tridimension geometrical pattern. Available in 4 colours. Cleanable with detergent and warm water.

✓ **Low VOC**

✓ **Bleach Cleanable**

✓ **Moisture Repellant**

✓ **Anti-Microbial**

Roll Size 137cm wide, trims to 128.3cm

Material Mylar on a non-woven backing

Pattern Repeat Size 152cm V

Sustainability

- Low Voc
- Bleach Cleanable
- Moisture and mold resistant
- Anti-Microbial

Fire Rating Tested in accordance with AS ISO 9705 2003 for the purpose of determining the Group Number classification as required by the Building Code of Australia for the control of fire spread on interior wall and ceiling linings.

The result achieved was:  
Classification - Group 2  
Specific Extinction - Less than 250m<sup>2</sup>/kg

Warranty 5-year warranty. Visit [baresque.com.au/warranty](https://baresque.com.au/warranty) for complete details.

Lead Time

- 2-weeks (approx.) from Wednesday, subject to stock availability.
- Additional 1-week for Western Australia.
- Express delivery is available subject to a surcharge. Contact Baresque for details and pricing.

Suggested Installation Non reverse hang/overlap double cut.  
Baresque recommends and supplies Roman brand adhesives and primers.

# MINDFUL

Wallcoverings » Commercial Wallcoverings

---

## Care Instructions

Always use a clean, white, soft cloth.

Use cloth with any of the following in preferred order of us:

1: Clear warm water

2: Mild solution of liquid detergent and warm water

3: Isopropyl Alcohol (a.k.a. rubbing alcohol)

Remove any detergent with a clean, damp cloth. Gently pat dry.

For more difficult stains, dampen a soft white cloth with a solution of household bleach (10% bleach / 90% water). Rub gently.

Rinse with a water dampened cloth to remove bleach concentration.

DO NOT USE solvent based or concentrated abrasive cleaning agents, lacquer thinners, nail polish remover as these may cause discolouration over a period of time.

Always test in an inconspicuous area first. If care instructions don't deliver the expected results, cease cleaning method immediately and contact Baresque for assistance.

---

# MINDFUL

Wallcoverings » Commercial Wallcoverings

---

## Colour & Finish Options