

MUDMEE

Wallcoverings » Commercial Wallcoverings



Brand: **Koroseal**

Collections: **Relic Collection**

Applications: **Walls**

1300 306 399

info@baresque.com.au

baresque.com.au

1 of 5

MUDMEE

Wallcoverings » Commercial Wallcoverings



MUDMEE

Wallcoverings » Commercial Wallcoverings

Mudmee is a modern version of a medium-scale, geometric pattern in the form of tie-dye shapes that's available in 10 colourways.

✓ **Low VOC**

✓ **Bleach Cleanable**

✓ **Anti-Microbial**

Description

Originating from Northeast Thailand, the word "Mudmee" is often translated to mean "tie-dye" or "tied threads". This special version of tie-dye is a highly coveted process; details of this technique are kept secret to preserve the culture and practice in the community that creates these beautiful designs. Our version of Mudmee is in keeping with these time-honored techniques, as it uses aspects from tie-dye form which creates a multitude of different shapes and patterns.

Mudmee's colours are inspired by hues crafted through natural dyeing techniques using plants and minerals to tint the substrate. The colours incorporate these ancient techniques to create a beautiful, natural story.

Composition

Type II Wallcovering

20 oz.ply Non-Woven backing

Environmental Info

Formaldehyde free

Heavy metals free

Perfluorooctanoic acid free

No solvent inks

Low VOC emissions. Any VOCs dissipate quickly (faster than paint) through normal ventilation and have no recognized adverse impact on indoor air quality.

Durability means products do not need to be replaced regularly due to wear and tear and being cleanable, vinyl products are ideal for helping keep commercial environments clean of bacteria.

Baresque will only deal with vinyl manufacturers that comply with applicable state and federal regulations, provide a factory that is safe and clean for its employees to work in, recycle scrap and inks during the manufacturing process to minimize waste related to production.

Pattern Repeat Size

132cm H x 61cm V

Roll Size

137cm wide x 27.4m - Available by the lineal metre

MUDMEE

Wallcoverings » Commercial Wallcoverings

Fire Rating Tested in accordance with AS ISO 9705 2003 for the purpose of determining the Group Number classification as required by the Building Code of Australia for the control of fire spread on interior wall and ceiling linings.

The result achieved was:
Classification - Group 2
Specific Extinction - Less than 250m²/kg

Lead Time

- 2-weeks (approx.) from Wednesday, subject to stock availability.
- Additional 1-week for Western Australia.
- Express delivery is available subject to a surcharge. Contact Baresque for details and pricing.

Suggested Installation Non-reverse hang alternate drops/straight across match/overlap and double cut.
Baresque recommends and supplies Roman brand adhesives and primers.

Care Instructions Use cloth with any of the following in preferred order of use:

- 1: Clear warm water
- 2: Mild solution of liquid detergent and warm water
- 3: Isopropyl Alcohol (a.k.a. rubbing alcohol)

Remove any detergent with a clean, damp cloth. Gently pat dry.

For more difficult stains, dampen a soft white cloth with a solution of household bleach (10% bleach / 90% water). Rub gently.

Rinse with a water dampened cloth to remove bleach concentration.

Do not use solvent based or concentrated abrasive cleaning agents, lacquer thinners or nail polish remover as these may cause discolouration over a period of time.

Always test in an inconspicuous area first.

If care instructions don't deliver the expected results, cease cleaning method immediately and contact Baresque for assistance.

Warranty 5-year warranty. Visit [baresque.com.au/warranty](https://www.baresque.com.au/warranty) for complete details.

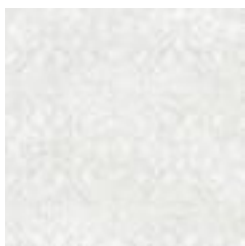
MUDMEE

Wallcoverings » Commercial Wallcoverings

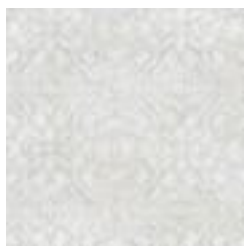
Colour & Finish Options

COLOURWAY CARD

COLOURWAY CARD



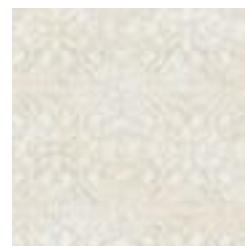
MU21-01
COTTONWOOD



MU21-02 SEA SALT



MU21-03 LIMONITE



MU21-05 MOUNTAIN
ALDER



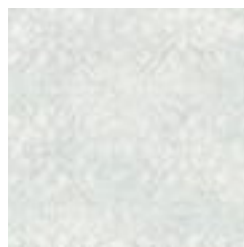
MU21-07 TEA TREE



MU21-10 ALUM



MU21-13 MOONSTONE



MU21-14 NETTLE



MU21-15 SPRUCE



MU21-16 LAPIS