

EMPIRE STACY GARCIA

Wallcoverings » Commercial Wallcoverings



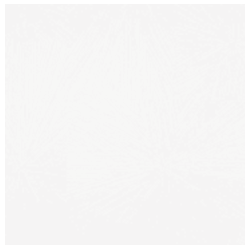
Brand: **Koroseal**

EMPIRE STACY GARCIA

Wallcoverings » Commercial Wallcoverings

COLOURWAY CARD

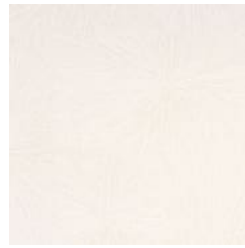
COLOURWAY CARD



SG07-01 ALABASTER



SG07-02 ASPEN



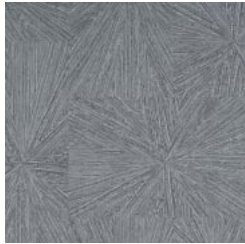
SG07-03 WHITE ASH



SG07-04 SOFT OAK



SG07-05 WEATHERED



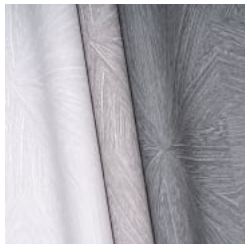
SG07-06 CARBON
GREY



SG07-07 LIGHT
WALNUT



SG07-08 EBONY



EMPIRE STACY GARCIA

Wallcoverings » Commercial Wallcoverings

Warm, yet modern, structured yet elegant, Empire features a dynamic, Art Deco inspired, textural wood starbust motif. Available in 8 colourways.

✓ **Low VOC**

✓ **Bleach Cleanable**

✓ **Anti-Microbial**

Description

Empire was created with balance and bravado, as an ode to the iconic Art Deco architecture that adorns the New York City skyline. Many of these remarkable monuments are seen as paragon of the Art Deco movement and tell the story of a long past era of glamour and artistry. Echoing the way the 20's offered elegance, refinement, and excitement, Empire embodies the city's architectural past.

Roll Size

137cm wide x 27.4m - Available by the lineal metre

Composition

Type II Wallcovering
20oz. ply - Woven Backing

Pattern Repeat Size

84cm V X 132cm H

Environmental Info

Formaldehyde free

Heavy metals free

Perfluorooctanoic acid free

No solvent inks

Low VOC emissions. Any VOCs dissipate quickly (faster than paint) through normal ventilation and have no recognized adverse impact on indoor air quality.

Durability means products do not need to be replaced regularly due to wear and tear and being cleanable, vinyl products are ideal for helping keep commercial environments clean of bacteria.

Baresque will only deal with vinyl manufacturers that comply with applicable state and federal regulations, provide a factory that is safe and clean for its employees to work in, recycle scrap and inks during the manufacturing process to minimize waste related to production.

Fire Rating

Tested in accordance with AS ISO 9705 2003 for the purpose of determining the Group Number classification as required by the Building Code of Australia for the control of fire spread on interior wall and ceiling linings.

The result achieved was:

Classification - Group 2

Specific Extinction - Less than 250m²/kg

Warranty

5-year warranty. Visit [baresque.com.au/warranty](https://www.baresque.com.au/warranty) for complete details.

EMPIRE STACY GARCIA

Wallcoverings » Commercial Wallcoverings

Lead Time

- 2-weeks (approx.) from Wednesday, subject to stock availability.
 - Additional 1-week for Western Australia.
 - Express delivery is available subject to a surcharge. Contact Baresque for details and pricing.
-

Suggested Installation

Non reverse hang/overlap double cut.
Baresque recommends and supplies Roman brand adhesives and primers.

Care Instructions

Use cloth with any of the following in preferred order of use:

- 1: Clear warm water
- 2: Mild solution of liquid detergent and warm water
- 3: Isopropyl Alcohol (a.k.a. rubbing alcohol)

Remove any detergent with a clean, damp cloth. Gently pat dry.

For more difficult stains, dampen a soft white cloth with a solution of household bleach (10% bleach / 90% water). Rub gently.

Rinse with a water dampened cloth to remove bleach concentration.

Do not use solvent based or concentrated abrasive cleaning agents, lacquer thinners or nail polish remover as these may cause discolouration over a period of time.

Always test in an inconspicuous area first.

If care instructions don't deliver the expected results, cease cleaning method immediately and contact Baresque for assistance.

EMPIRE STACY GARCIA

Wallcoverings » Commercial Wallcoverings

Colour & Finish Options