

# CADENCE MOONSTONE

Wallcoverings » Decorative Wallcoverings



Brand: **Omexco**

Collection: **Moonstone**

1300 306 399

[info@baresque.com.au](mailto:info@baresque.com.au)

[baresque.com.au](http://baresque.com.au)

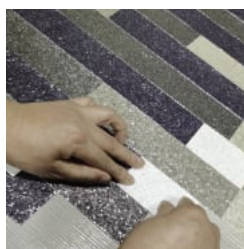
1 of 5

# CADENCE MOONSTONE

Wallcoverings » Decorative Wallcoverings

---

## COLOURWAY CARD



COLOURWAY CARD

MNE4001

# CADENCE MOONSTONE

Wallcoverings » Decorative Wallcoverings

Cadence is a decorative wallcovering with a mosaic pattern of different colours of fine twinkling flakes of mica.

✓ Washable

✓ Ecological

## Description

A lavish collection of textured wallcoverings softly iridescent like the moonstone. A semi-precious stone with alluring lustre, evocative of shimmering moonlight gliding across calm water.

Moonstone is a timeless collection of beautiful and oh-so-touchable wallcoverings crafted from natural mica. Our luxurious 3D textures subtly reflect light to dazzling

effect. Brought to you in a range of stone sizes, from superfine to tantalizingly textured. Elegantly embellished by abstract art. Handcrafted into a magnificent mosaic. Softly sprinkled in striking geometric designs. The moonstone collection. Luxurious. Mysterious. Dazzling.

## Roll Size

91cm wide - Available by the lineal metre

## Composition

Handlaid mica patchwork

WeightL 610 g/m<sup>2</sup>

## Pattern Repeat Size

45.5cm .The design needs an offset match

## Environmental Info

The materials contained in these wallcoverings are naturally occurring and renewable resources harvested from farms and coloured with water-based inks.

## Fire Rating

Tested in accordance with AS ISO 9705 2003 for the purpose of determining the Group Number classification as required by the Building Code of Australia for the control of fire spread on interior wall and ceiling linings.

The result achieved was:

Classification - Group 2

Specific Extinction - Less than 250m<sup>2</sup>/kg

## Warranty

2-year warranty. Visit [baresque.com.au/warranty](https://www.baresque.com.au/warranty) for complete details.

## Lead Time

- 2-weeks (approx.) from Wednesday, subject to stock availability.
- Additional 1-week for Western Australia.
- Express delivery is available subject to a surcharge. Contact Baresque for details and pricing.

# CADENCE MOONSTONE

Wallcoverings » Decorative Wallcoverings

---

## Suggested Installation

Non-reverse hang / 3 drops / overlap and double cut.

Baresque recommend and supply Romans brand adhesives and primers.

---

## Care Instructions

Mica wallcoverings should be handled with care, as they are not stain repellent treated.

Remove liquid stains immediately using a clean, white, soft, damp cloth tapping on the wallcovering lightly.

Use of a vacuum cleaner is not recommended.

Always test in an inconspicuous area first. If care instructions don't deliver the expected results, cease cleaning method immediately and contact Baresque for assistance.

---

# CADENCE MOONSTONE

Wallcoverings » Decorative Wallcoverings

---

## Colour & Finish Options