

STARDUST MOONSTONE

Wallcoverings » Decorative Wallcoverings



Brand: **Omexco**

Collection: **Moonstone**

1300 306 399

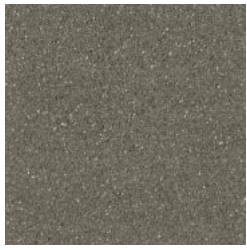
info@baresque.com.au

baresque.com.au

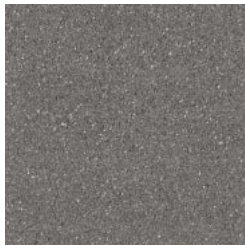
1 of 5

STARDUST MOONSTONE

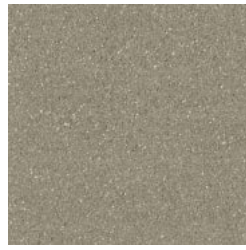
Wallcoverings » Decorative Wallcoverings



MNE 5001



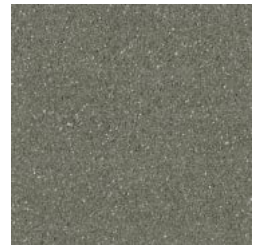
MNE 5002



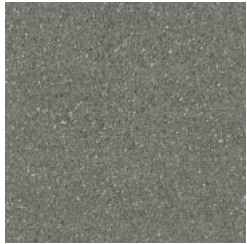
MNE 5003



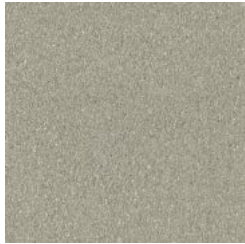
MNE 5004



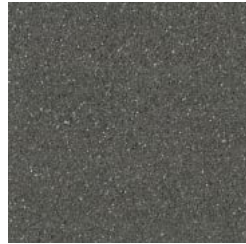
MNE 5005



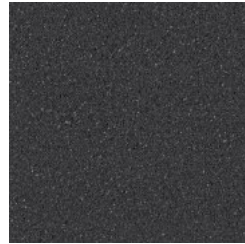
MNE 5006



MNE 5102



MNE 5106



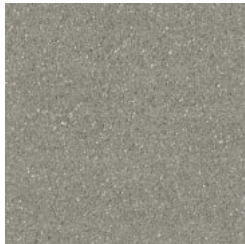
MNE 5108



MNE 5120



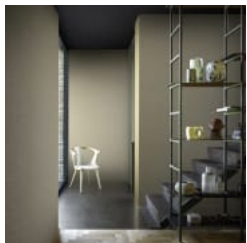
MNE 5121



MNE 5123



MNE 5131



STARDUST MOONSTONE

Wallcoverings » Decorative Wallcoverings

Stardust is a decorative wallcovering made of very fine mica, in a soft and organic palette of hues. Available in 13 colourways.

✓ **Light Resistance**

✓ **Washable**

✓ **Ecological**

Description

A lavish collection of textured wallcoverings softly iridescent like the moonstone. A semi-precious stone with alluring lustre, evocative of shimmering moonlight gliding across calm water. Moonstone is a timeless collection of beautiful and oh-so-touchable wallcoverings crafted from natural mica. Our luxurious 3D textures subtly reflect light to dazzling effect.

Brought to you in a range of stone sizes, from superfine to tantalizingly textured. Elegantly embellished by abstract art. Handcrafted into a magnificent mosaic. Softly sprinkled in striking geometric designs. The moonstone collection. Luxurious. Mysterious. Dazzling.

Roll Size

92cm x N/A - Available by the lineal metre.

Composition

Mica and wood pulp

Weight: 412 g/m²

Environmental Info

The materials contained in these wallcoverings are naturally occurring and renewable resources harvested from farms and coloured with water-based inks.

Fire Rating

Tested in accordance with AS ISO 9705 2003 for the purpose of determining the Group Number classification as required by the Building Code of Australia for the control of fire spread on interior wall and ceiling linings.

The result achieved was:
Classification - Group 2
Specific Extinction - Less than 250m²/kg

Warranty

2-year warranty. Visit [baresque.com.au/warranty](https://www.baresque.com.au/warranty) for complete details.

Lead Time

- 2-weeks (approx.) from Wednesday, subject to stock availability.
- Additional 1-week for Western Australia.
- Express delivery is available subject to a surcharge. Contact Baresque for details and pricing.

Suggested Installation

Trim selvedge.

Reverse hang alternate drops/butt join.

Baresque recommends and supply Roman brand adhesives and primers.

STARDUST MOONSTONE

Wallcoverings » Decorative Wallcoverings

Care Instructions

Always use a clean, white, soft cloth.

Remove liquid stains immediately using a dry cloth. Avoid hard scrubbing.

For tougher stains, dampen the cloth with warm water or a weak dilution of liquid detergent and apply being careful not to soak the material. Always work towards the centre of the stain so as to avoid further spreading.

Remove any detergent with a clean, damp cloth. Gently pat dry.

Always test in an inconspicuous area first.

STARDUST MOONSTONE

Wallcoverings » Decorative Wallcoverings

Colour & Finish Options