

# SANCTUARY CONCERTEX

Fabrics » Woven Fabrics

---



Brand: **Concertex**

# SANCTUARY CONCERTEX

Fabrics » Woven Fabrics



AMBER



BIRCH



BLUSH



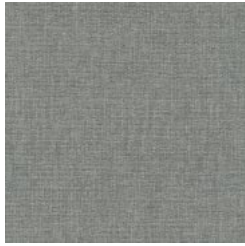
CARBON



DENIM



DOVE



EXHALE



FOG



LAGOON



LAPIS



PLATINUM



POLARIS



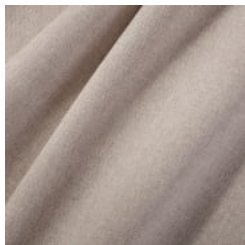
RUBY



SAGE



SMOKE



# SANCTUARY CONCERTEX

Fabrics » Woven Fabrics

Sanctuary is a 137cm wide high-performance upholstery ideal for high-traffic areas. Available in 15 colourways.

✓ **Bleach Cleanable**

✓ **Anti-Bacterial**

✓ **High Stain Resistance**

## Description

We all have a Sanctuary—that comforting place of refuge away from the rest of the world. Within our sanctuaries, we feel most like ourselves.

Every item we've thoughtfully placed inside it is an extension of us. Our sanctuary fabric seeks to do just that.

This soft, highperformance, woven textile was designed to make you feel taken care of. Your sanctuary should be protected, and our Premiere PFC free water-based stain resistant finish ensures this fabric will remain as beautiful as the moment you found it.

With an exclusive, breathable liquid barrier incorporated in the middle and embedded with water based stain resistant polymer, it is easy to clean, and passes 100,000+ double rubs making this fabric ideal in most high-traffic areas.

## Roll Size

137cm x Approx 55m - Available by the lineal metre

## Composition

100% Polyester Backing: Premiere Liquid Barrier & Polyester Knit

## Abrasion

100,000+ Double Rubs

## Finishes

Premier Stain Resistant - Water Based

## Environmental Info

PVC/Phthalates free

No added fire retardant

Healthier Hospitals compliant

## Warranty

2-year warranty. Visit [baresque.com.au/warranty](https://baresque.com.au/warranty) for complete details.

## Lead Time

- 2-weeks (approx.) from Wednesday, subject to stock availability.
- Additional 1-week for Western Australia.
- Express delivery is available subject to a surcharge. Contact Baresque for details and pricing.

# SANCTUARY CONCERTEX

Fabrics » Woven Fabrics

---

## Care Instructions

Always use a clean, white, soft cloth.

Clean in situ using a damp cloth and mild detergent. Sponge down afterwards with a clean, damp cloth.

Using a cloth to pat dry will help eliminate watermarks.

Ensure the pile is brushed back to its natural direction.

Upholstered furniture should be regularly vacuumed or brushed with a soft nylon brush to remove grit or dust, which may damage the pile.

Never use stiff bristles or wire brushes, as they may damage the fabric.

Always test in an inconspicuous area first. If care instructions don't deliver the expected results, cease cleaning method immediately and contact Baresque for assistance.

---

# SANCTUARY CONCERTEX

Fabrics » Woven Fabrics

---

## Colour & Finish Options