

# LORELAI

Fabrics » Woven Fabrics



Brand: **CF Stinson**

# LORELAI

Fabrics » Woven Fabrics

## COLOURWAY CARD

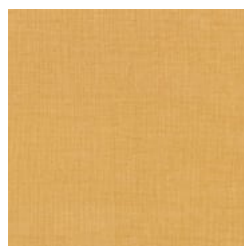
COLOURWAY CARD



66140 CREAM



66141 CRYSTAL



66142 GOURD



66143 TRANQUIL



66144 AGAVE



66145 MELON



66146 ARIEL



66147 LIMA



66148 OAT



66149 SHELL



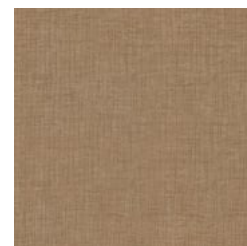
66150 BLOSSOM



66151 HERON



66152 HOLLY



66153 ELM



66154 DOVE



66155 TAPAS



66156 BIRDY



66157 HYDRA



66158 ASH



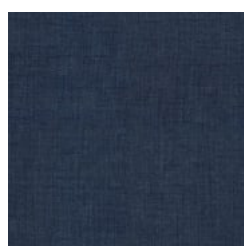
66159 SHOAL



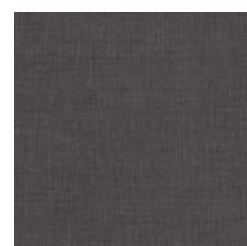
66160 SULTRY



66161 TEMPEST



66162 NAVY



66163 SWIFT

# LORELAI

Fabrics » Woven Fabrics

---



66164 PIRATE

# LORELAI

Fabrics » Woven Fabrics

Lorelai is a performance fabric that's stain resistant, bleach cleanable and environmentally friendly. Available in 25 colourways.

- ✓ **Stain Resistant**
- ✓ **Greenguard Gold Certified**
- ✓ **Abrasion Resistant**
- ✓ **Fluid Barrier**
- ✓ **Bleach Cleanable**

Roll Size 137cm x Approx 50m - Available by the lineal metre

Composition 92% Polyester, 6% Polyurethane, 2% Silicone  
Backing: Thermo Bonded High Performance Polyurethane.

Abrasion Exceeds 100,000 Double Rubs - Heavy duty

Environmental Info Greenguard Certifications contributes towards LEED credits for low-emitting furniture and ensures compliance with Business and Institutional Furniture Manufacturers Association (BIFMA) X7.1 standard and BIFMA e3 credit 7.6.1.

Greenguard Gold Certification standard includes:

\* Health-based criteria for additional chemicals and requires lower total VOC emissions levels to help ensure that products are acceptable for use in environments like schools and healthcare facilities.

\* Products that also comply with requirements of the state of California's Department of Public Health (CDPH) "Standard Method for the Test and Evaluation of Volatile Organic Chemical Emissions from Indoor Sources Using Environmental Chambers, Version 1.2 (2017)" (also know as California Section 01350).

\* Products that are compliant with the BIFMA X7.1 standard and BIFMA e3 credits 7.6.1, 7.6.2, and 7.6.3.

Fire Rating Tested in accordance with AS1530.3

Spread of Flame Index - 0

Smoke Developed Index - 5

Warranty 2-year warranty. Visit [baresque.com.au/warranty](https://www.baresque.com.au/warranty) for complete details.

Lead Time

- 2-weeks (approx.) from Wednesday, subject to stock availability.
- Additional 1-week for Western Australia.
- Express delivery is available subject to a surcharge. Contact Baresque for details and pricing.

# LORELAI

Fabrics » Woven Fabrics

---

## Care Instructions

Always use a clean, white, soft cloth.

Prepare a mixture of 1/3 Napisan and 2/3 Fab. Combine the mixture with water to make a paste about the consistency of soft margarine i.e. not too runny. Apply using a soft bristle brush. Leave for 10 minutes.

Use a brush and clean, warm water to remove the paste being sure to renew the water so that it remains clean.

Never use stiff bristles or wire brushes, as they may damage the fabric. To prevent soil build-up, frequent vacuuming is recommended.

Using a cloth to pat dry will help eliminate watermarks.

For more difficult stains, dampen a soft white cloth with a solution of household bleach (10% bleach / 90% water). Rub gently. Rinse with a water dampened cloth to remove bleach concentration.

Always test in an inconspicuous area first. If care instructions don't deliver the expected results, cease cleaning method immediately and contact Baresque for assistance.

---

# LORELAI

Fabrics » Woven Fabrics

---

## Colour & Finish Options