

KINGSMAN

Fabrics » Woven Fabrics



Brand: **CF Stinson**

KINGSMAN

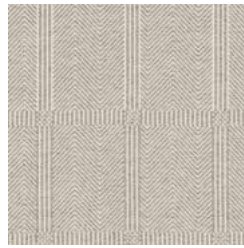
Fabrics » Woven Fabrics

COLOURWAY CARD

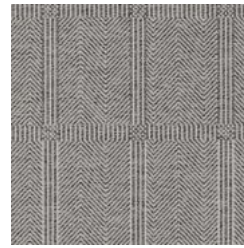
COLOURWAY CARD



66350 MANOR



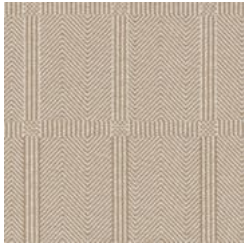
66351 QUARRY



66352 GRAYSTONE



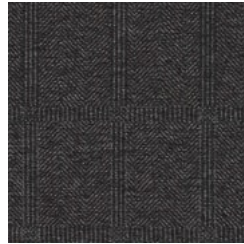
66353 BROWNSTONE



66354 PRAIRIE



66355 REGATTA



66356 YORK

KINGSMAN

Fabrics » Woven Fabrics

Kingsman is a stain resistant performance fabric with a chevron pattern. It's bleach cleanable and environmentally friendly. Available in 7 colourways

✓ **Stain Resistant**

✓ **Abrasion Resistant**

✓ **Bleach Cleanable**

✓ **Greenguard Gold Certified**

Roll Size 137cm x 45.7m - Available by the lineal metre

Composition 74% Olefin
26% Polyester
Acrylic Backing

Abrasion Exceeds 75,000 Double Rubs - heavy duty

Pattern Repeat Size 35.5cm H x 24cm V

Environmental Info Greenguard Certifications contributes towards LEED credits for low-emitting furniture and ensures compliance with Business and Institutional Furniture Manufacturers Association (BIFMA) X7.1 standard and BIFMA e3 credit 7.6.1.

Greenguard Gold Certification standard includes:

* Health-based criteria for additional chemicals and requires lower total VOC emissions levels to help ensure that products are acceptable for use in environments like schools and healthcare facilities.

* Products that also comply with requirements of the state of California's Department of Public Health (CDPH) "Standard Method for the Test and Evaluation of Volatile Organic Chemical Emissions from Indoor Sources Using Environmental Chambers, Version 1.2 (2017)" (also know as California Section 01350).

* Products that are compliant with the BIFMA X7.1 standard and BIFMA e3 credits 7.6.1, 7.6.2, and 7.6.3.

Fire Rating Tested in accordance with AS1530.3

Spread of Flame Index - 0

Smoke Developed Index - 5

Warranty 2-year warranty. Visit [baresque.com.au/warranty](https://www.baresque.com.au/warranty) for complete details.

KINGSMAN

Fabrics » Woven Fabrics

Lead Time

- 2-weeks (approx.) from Wednesday, subject to stock availability.
 - Additional 1-week for Western Australia.
 - Express delivery is available subject to a surcharge. Contact Baresque for details and pricing.
-

Care Instructions

Always use a clean, white, soft cloth.

Prepare a mixture of 1/3 Napisan and 2/3 Fab. Combine the mixture with water to make a paste about the consistency of soft margarine i.e. not too runny. Apply using a soft bristle brush. Leave for 10 minutes.

Use a brush and clean, warm water to remove the paste being sure to renew the water so that it remains clean.

Never use stiff bristles or wire brushes, as they may damage the fabric. To prevent soil build-up, frequent vacuuming is recommended.

Using a cloth to pat dry will help eliminate watermarks.

For more difficult stains, dampen a soft white cloth with a solution of household bleach (10% bleach / 90% water). Rub gently. Rinse with a water dampened cloth to remove bleach concentration.

Always test in an inconspicuous area first. If care instructions don't deliver the expected results, cease cleaning method immediately and contact Baresque for assistance.

KINGSMAN

Fabrics » Woven Fabrics

Colour & Finish Options