

CHEER

Fabrics » Woven Fabrics



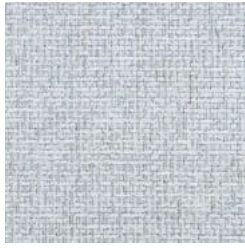
Brand: **Burch**

CHEER

Fabrics » Woven Fabrics



Cheer-1011415-Ocean



Cheer-1011416-Spa



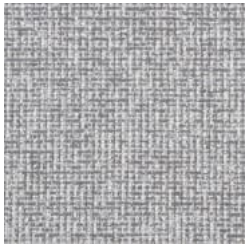
Cheer-1011417-Sky



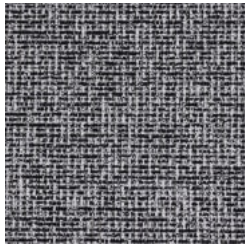
Cheer-1011418-Shale



Cheer-1011419-Sapphire



Cheer-1011420-Lunar



Cheer-1011421-Caviar



Cheer-1011422-Flame



Cheer-1011423-Persimmon



Cheer-1011424-Barley



Cheer-1011425-Honey



Cheer-1011426-Flax



Cheer-1011427-Ecru



Cheer-1011428-Alpine

CHEER

Fabrics » Woven Fabrics

Cheer is a 137cm wide crypton seating fabric with a woven look, that's available in 14 colourways.

✓ Bleach Cleanable

✓ Greenguard Gold Certified

✓ Crypton

Description

In a nod to the iconic French tweed, Cheer is dressed to impress with high texture and high style. Cheer's palette of fourteen takes a fashion forward approach with of-the-moment jewel tones and layer friendly neutrals.

Roll Size

137cm x Approx 45m - Available by the lineal metre

Composition

76% Polyester , 24% Acrylic

Backing: Crypton

Abrasion

70,000 Double Rubs

Finishes

Crypton

Environmental Info

Greenguard Certifications contributes towards LEED credits for low-emitting furniture and ensures compliance with Business and Institutional Furniture Manufacturers Association (BIFMA) X7.1 standard and BIFMA e3 credit 7.6.1.

Greenguard Gold Certification standard includes:

* Health-based criteria for additional chemicals and requires lower total VOC emissions levels to help ensure that products are acceptable for use in environments like schools and healthcare facilities.

* Products that also comply with requirements of the state of California's Department of Public Health (CDPH) "Standard Method for the Test and Evaluation of Volatile Organic Chemical Emissions from Indoor Sources Using Environmental Chambers, Version 1.2 (2017)" (also know as California Section 01350).

* Products that are compliant with the BIFMA X7.1 standard and BIFMA e3 credits 7.6.1, 7.6.2, and 7.6.3.

Fire Rating

Tested in accordance with AS1530.3

Spread of Flame Index - 0

Smoke Developed Index - 5

Warranty

2-year warranty. Visit [baresque.com.au/warranty](https://www.baresque.com.au/warranty) for complete details.

CHEER

Fabrics » Woven Fabrics

Lead Time

- 2-weeks (approx.) from Wednesday, subject to stock availability.
 - Additional 1-week for Western Australia.
 - Express delivery is available subject to a surcharge. Contact Baresque for details and pricing.
-

Care Instructions

Always use a clean, white, soft cloth.

Prepare a mixture of 1/3 Napisan and 2/3 Fab. Combine the mixture with water to make a paste about the consistency of soft margarine i.e. not too runny. Apply using a soft bristle brush. Leave for 10 minutes.

Use a brush and clean, warm water to remove the paste being sure to renew the water so that it remains clean.

Never use stiff bristles or wire brushes, as they may damage the fabric. To prevent soil build-up, frequent vacuuming is recommended.

Using a cloth to pat dry will help eliminate watermarks.

For more difficult stains, dampen a soft white cloth with a solution of household bleach (10% bleach / 90% water). Rub gently. Rinse with a water dampened cloth to remove bleach concentration.

Always test in an inconspicuous area first. If care instructions don't deliver the expected results, cease cleaning method immediately and contact Baresque for assistance.

CHEER

Fabrics » Woven Fabrics

Colour & Finish Options