

ILLUSION

Fabrics » Woven Fabrics



Brand: **Burch**

ILLUSION

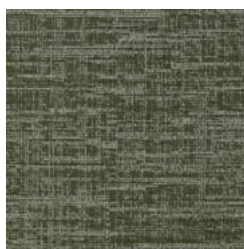
Fabrics » Woven Fabrics



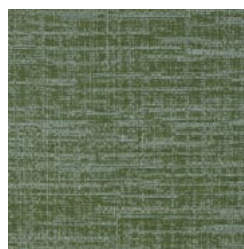
COLOURWAR CARD



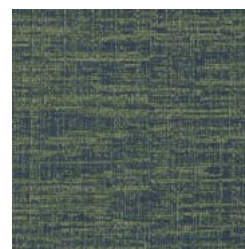
Illusion-1011462-
Chartreuse



Illusion-1011463-Ivy



Illusion-1011464-Kelp



Illusion-1011465-
Peacock



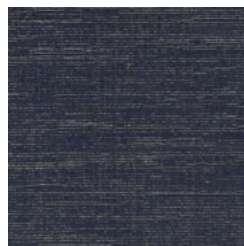
Illusion-1011466-Amalfi



Illusion-1011467-Breeze



Illusion-1011468-
Chambray



Illusion-1011469-Indigo



Illusion-1011470-
Mesquite



Illusion-1011471-
Crimson



Illusion-1011472-
Papaya



Illusion-1011473-Peony



Illusion-1011474-Gilded



Illusion-1011475-Linen



Illusion-1011476-
Stonewashed



Illusion-1011477-Deco



ILLUSION

Fabrics » Woven Fabrics

Illusion is a 137cm wide crypton fabric that's bleach cleanable and Greenguard Gold certified. Available in 16 colourways.

✓ **Bleach Cleanable**

✓ **Greenguard Gold Certified**

✓ **Crypton**

Description Illusion is a mind-bending new texture with nuanced layers and an unexpected pop of colour. Shifting perspectives reveal an iridescent surface with a luminous glow, enhancing each of Illusion's sixteen hypnotic hues.

Roll Size 137cm x Approx 55m - Available by the lineal metre

Composition 84% Polyester
16% Post Consumer Recycled
Polyester

Abrasion 63,000 Double Rubs

Environmental Info Greenguard Certifications contributes towards LEED credits for low-emitting furniture and ensures compliance with Business and Institutional Furniture Manufacturers Association (BIFMA) X7.1 standard and BIFMA e3 credit 7.6.1.

Greenguard Gold Certification standard includes:

- * Health-based criteria for additional chemicals and requires lower total VOC emissions levels to help ensure that products are acceptable for use in environments like schools and healthcare facilities.
- * Products that also comply with requirements of the state of California's Department of Public Health (CDPH) "Standard Method for the Test and Evaluation of Volatile Organic Chemical Emissions from Indoor Sources Using Environmental Chambers, Version 1.2 (2017)" (also known as California Section 01350).
- * Products that are compliant with the BIFMA X7.1 standard and BIFMA e3 credits 7.6.1, 7.6.2, and 7.6.3.

Fire Rating Tested in accordance with AS1530.3
Spread of Flame Index - 0
Smoke Developed Index - 5

Warranty 2-year warranty. Visit [baresque.com.au/warranty](https://www.baresque.com.au/warranty) for complete details.

ILLUSION

Fabrics » Woven Fabrics

Lead Time

- 2-weeks (approx.) from Wednesday, subject to stock availability.
 - Additional 1-week for Western Australia.
 - Express delivery is available subject to a surcharge. Contact Baresque for details and pricing.
-

Care Instructions

Always use a clean, white, soft cloth.

Prepare a mixture of 1/3 Napisan and 2/3 Fab. Combine the mixture with water to make a paste about the consistency of soft margarine i.e. not too runny. Apply using a soft bristle brush. Leave for 10 minutes.

Use a brush and clean, warm water to remove the paste being sure to renew the water so that it remains clean.

Never use stiff bristles or wire brushes, as they may damage the fabric. To prevent soil build-up, frequent vacuuming is recommended.

Using a cloth to pat dry will help eliminate watermarks.

For more difficult stains, dampen a soft white cloth with a solution of household bleach (10% bleach / 90% water). Rub gently. Rinse with a water dampened cloth to remove bleach concentration.

Always test in an inconspicuous area first. If care instructions don't deliver the expected results, cease cleaning method immediately and contact Baresque for assistance.

ILLUSION

Fabrics » Woven Fabrics

Colour & Finish Options