

# VECTOR STINSON

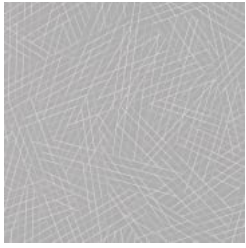
---



Brand: **CF Stinson**

# VECTOR STINSON

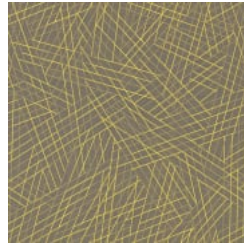
---



VEC10 ANGLE



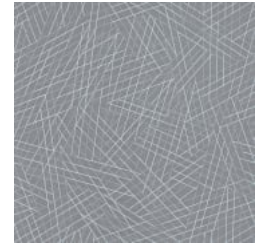
VEC11 SUEDE



VEC12 SEGMENT



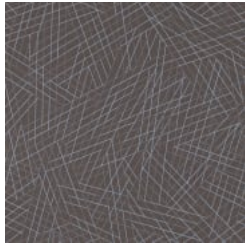
VEC13 SPICE



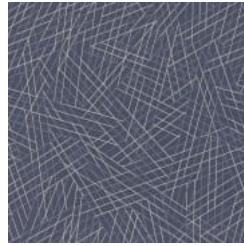
VEC14 RAY



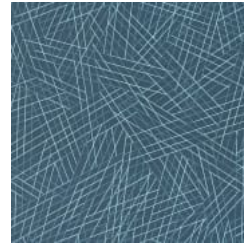
VEC15 LIME



VEC16 INTERSECT



VEC17 BLUE



VEC18 PARALLEL

# VECTOR STINSON

---

Vector is a non-phthalate vinyl upholstery that is stain resistant and bleach cleanable. Available in 9 colourways.

✓ **Stain Resistant**

✓ **Abrasion Resistant**

✓ **Ink Resistant**

✓ **Fluid Barrier**

✓ **Bleach Cleanable**

✓ **Fade Resistant**

---

## Description

Vector is a non-phthalate vinyl upholstery that is stain resistant and bleach cleanable. Available in 9 colourways.

---

## Roll Size

137cm x 27.4m - Available by the lineal metre

---

## Composition

Non-Phthalate Vinyl Surface with Polyester Backing

---

## Abrasion

Exceeds 100,000 double rubs - heavy duty

---

## Pattern Repeat Size

28.5cm H x 30cm V 11.25" H x 11.875" V

---

## Environmental Info

- GREENGUARD Certified
  - REACH Compliant
  - RoHS Compliant
  - No PFAS, fluorocarbons or perfluorinated compounds
  - No added flame retardants
  - No added antimicrobials
  - Does not contain formaldehyde
  - Formulated without Phthalates
- 

## Fire Rating

Tested in accordance with AS1530.3

Spread of Flame Index - 0

Smoke Developed Index - 5

---

## Warranty

2-year warranty. Visit [baresque.com.au/warranty](https://www.baresque.com.au/warranty) for complete details.

---

# VECTOR STINSON

---

## Lead Time

- 2-weeks (approx.) from Wednesday, subject to stock availability.
- Additional 1-week for Western Australia.
- Express delivery is available subject to a surcharge. Contact Baresque for details and pricing.

---

## Care Instructions

Use cloth with any of the following in preferred order of use:

- 1: Clear warm water
- 2: Mild solution of liquid detergent and warm water
- 3: Isopropyl Alcohol (a.k.a. rubbing alcohol)

Remove any detergent with a clean, damp cloth. Gently pat dry.

For more difficult stains, dampen a soft white cloth with a solution of household bleach (10% bleach / 90% water). Rub gently. Rinse with a water dampened cloth to remove bleach concentration.

Do not use solvent based or concentrated abrasive cleaning agents, lacquer thinners or nail polish remover as these may cause discolouration over a period of time.

Always test in an inconspicuous area first.

If care instructions don't deliver the expected results, cease cleaning method immediately and contact Baresque for assistance.

---

# VECTOR STINSON

---

Colour & Finish Options