

# REVERB

Fabrics » Vinyl and Faux Leather Fabrics



Brand: **Burch**

# REVERB

Fabrics » Vinyl and Faux Leather Fabrics



COLOURWAY CARD



1011536 CASCADE



1011537 JUNIPER



1011538 CROCODILE



1011539 VANILLA



1011540 TWINE



1011541 MEDALLION



1011542 CAYENNE



1011543 GAMET



1011544 CONCORD



1011545 HAZELNUT



1011546 GRIZZLY



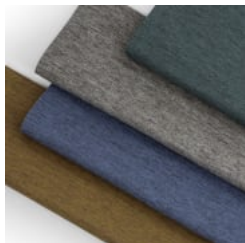
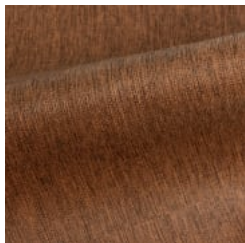
1011547 RUSSET



1011548 METEOR



1011549 CHARCOAL



# REVERB

Fabrics » Vinyl and Faux Leather Fabrics

Reverb is a high-performance vinyl upholstery that's ink and bleach cleanable with a UV resistance of 300 hours. Available in 14 colourways.

✓ **Low VOC**

✓ **Ink Cleanable**

✓ **Stain Resistant**

✓ **UV Resistance**

✓ **Outdoor Suitable**

**Description** Reminiscent of grasscloth, Reverb's subtle striations create textural interest and dimensional appeal. Reverb is available in fourteen hues with an emphasis on refined neutrals and saturated jewel tones.

**Product Code** FB.REVERB

**Roll Size** 137cm wide x 27.4m - Available by the lineal metre

**Composition** Face: 100% Vinyl  
Backing: 100% Polyester

**Abrasion** 100,000 Double Rubs

**Fire Rating** Tested in accordance with AS1530.3  
Spread of Flame Index - 0  
Smoke Developed Index - 5

**Warranty** 2-year warranty. Visit [baresque.com.au/warranty](https://www.baresque.com.au/warranty) for complete details.

**Lead Time**

- 2-weeks (approx.) from Wednesday, subject to stock availability.
- Additional 1-week for Western Australia.
- Express delivery is available subject to a surcharge. Contact Baresque for details and pricing.

# REVERB

Fabrics » Vinyl and Faux Leather Fabrics

---

## Care Instructions

Use cloth with any of the following in preferred order of use:

1: Clear warm water

2: Mild solution of liquid detergent and warm water

3: Isopropyl Alcohol (a.k.a. rubbing alcohol)

Remove any detergent with a clean, damp cloth. Gently pat dry.

For more difficult stains, dampen a soft white cloth with a solution of household bleach (10% bleach / 90% water). Rub gently. Rinse with a water dampened cloth to remove bleach concentration.

Do not use solvent based or concentrated abrasive cleaning agents, lacquer thinners or nail polish remover as these may cause discolouration over a period of time.

Always test in an inconspicuous area first.

If care instructions don't deliver the expected results, cease cleaning method immediately and contact Baresque for assistance.

---

# REVERB

**Fabrics** » Vinyl and Faux Leather Fabrics

---

## Colour & Finish Options