

VERDON

Wallcoverings » Advanced Wall Protection



Brand: **Versa**

VERDON

Wallcoverings » Advanced Wall Protection

COLOURWAY CARD

COLOURWAY CARD



AFP04-013 Washed



AFP04-021 Magnolia



AFP04-078
Champagne



AFP04-132 Oat



AFP04-149 Kiln



AFP04-258 Earthy



AFP04-397 Caesious



AFP04-418 Warmth



AFP04-615 Charwood



AFP04-673 Chestnut



AFP04-729 Golden



AFP04-819 Lithic



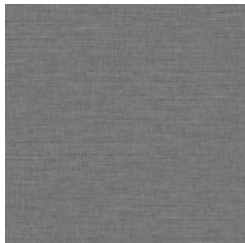
AFP04-827 Basalt



AFP04-865 Stone



AFP04-870 Night Fall



AFP04-886 Smoke

VERDON

Wallcoverings » Advanced Wall Protection

Verdon is a refined silk with sophisticated neutral palette and diverse colour range. Available in 16 colourways.

Description

Versa's Vantage III is superior wall protection with evo PVC-free technology. This 33 oz material provides specifiers choice in material without compromising the beauty, quality, and durability of the product.

Vantage III is constructed of olefin composite, contains 30% recycled content, and exceeds Type III performance standards. Engineered for heavy traffic spaces, it is scratch, puncture, tear, and stain resistant.

Roll Size

132/137cm x 27.4m - Available by the lineal metre.

Lead Time

- 2-weeks (approx.) from Wednesday, subject to stock availability.
- Additional 1-week for Western Australia.
- Express delivery is available subject to a surcharge. Contact Baresque for details and pricing.

Suggested Installation

Reverse hang alternate drops/overlap and double cut.

Advanced Wall Protection requires a specific installation method and we strongly recommend you use one of our recommended installers.

Download the Installation Instructions for details.

Baresque recommends and supply Roman brand adhesives and primers.

Care Instructions

1. Completion:

Immediately upon completion of installation, installer shall make sure that these products are cleaned and free of any layout marks, excess adhesive or surface blemishes. Remove excess adhesive with methods and materials recommended by the adhesive manufacturer.

2. Clean-Up and Routine Maintenance:

Rigid Profiles: For general cleaning, use disinfectant cleaner.

All Purpose Cleaner Heavy Duty: Use a clean, lint-free cloth and wipe clean. Do not use any abrasive cleaning cloths or sponges.

1. Spray products onto profile and wipe with a dampened cloth.

2. Repeat process if stain remains. If cleaning product residue remains, rinse with water.

VERDON

Wallcoverings » Advanced Wall Protection

Colour & Finish Options