

# TOP NOTCH

Wallcoverings » Commercial Wallcoverings



Brand: **Koroseal**

Designed by: **Stacy Garcia**

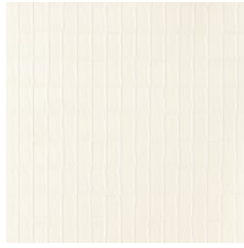
# TOP NOTCH

Wallcoverings » Commercial Wallcoverings

## COLOURWAY CARD



SG19--01 SILK WHITE



SG19-02 PEARL



SG19-03 CHAMPAGNE



SG19-04 STARDUST



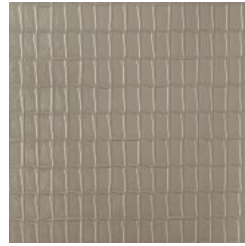
SG19-05 MIST



SG19-06 ICEBLUE



SG19-07 MIDAS



SG19-08 IRON



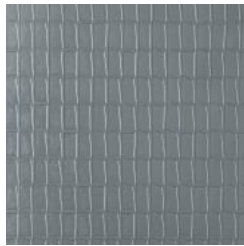
SG19-09  
HEARTHSTONE



SG19-10 GRANITE  
GRAY



SG19-11 COPPER



SG19-12 SLATE BLUE



# TOP NOTCH

Wallcoverings » Commercial Wallcoverings

Top Notch's modern 3-dimensional emboss is reminiscent of light bouncing off glass windows found in an urban landscape. Available in 12 colourways.

✓ **Mildew Resistant**

✓ **Bleach Cleanable**

**Description** By weaving lighter and darker threads together, horizontal stripes are created in the linen inspired Lazur pattern that gives the illusion of depth. You can recognize the typical irregularities of the natural linen thread in this sophisticated design.

**Roll Size** 132/137cm x 27.4m - Available by the lineal metre.

**Weight** 20oz (452g/m<sup>2</sup>)

**Composition** Type II Wallcovering  
20 oz. ply Non -Woven backing

**Pattern Repeat Size** 90.1 cm V 132 cm H

**Environmental Info**

- Formaldehyde free
- Heavy metals free
- Perfluorooctanoic acid free
- No solvent inks

Low VOC emissions. Any VOCs dissipate quickly (faster than paint) through normal ventilation and have no recognized adverse impact on indoor air quality.

Durability means products do not need to be replaced regularly due to wear and tear and being cleanable, vinyl products are ideal for helping keep commercial environments clean of bacteria.

Baresque will only deal with vinyl manufacturers that comply with applicable state and federal regulations, provide a factory that is safe and clean for its employees to work in, recycle scrap and inks during the manufacturing process to minimize waste related to production.

**Fire Rating** Tested in accordance with AS ISO 9705 2003 for the purpose of determining the Group Number classification as required by the Building Code of Australia for the control of fire spread on interior wall and ceiling linings.

The result achieved was:  
Classification - Group 2  
Specific Extinction - Less than 250m<sup>2</sup>/kg

# TOP NOTCH

Wallcoverings » Commercial Wallcoverings

---

**Warranty** 5-year warranty. Visit [baresque.com.au/warranty](https://baresque.com.au/warranty) for complete details.

---

**Lead Time**

- 2-weeks (approx.) from Wednesday, subject to stock availability.
- Additional 1-week for Western Australia.
- Express delivery is available subject to a surcharge. Contact Baresque for details and pricing.

---

**Suggested Installation** Non-reverse hang alternate drops/straight across match/overlap and double cut.  
Baresque recommends and supplies Roman brand adhesives and primers.

---

**Care Instructions** Use cloth with any of the following in preferred order of use:

- 1: Clear warm water
- 2: Mild solution of liquid detergent and warm water
- 3: Isopropyl Alcohol (a.k.a. rubbing alcohol)

Remove any detergent with a clean, damp cloth. Gently pat dry.

For more difficult stains, dampen a soft white cloth with a solution of household bleach (10% bleach / 90% water). Rub gently.

Rinse with a water dampened cloth to remove bleach concentration.

Do not use solvent based or concentrated abrasive cleaning agents, lacquer thinners or nail polish remover as these may cause discolouration over a period of time.

Always test in an inconspicuous area first.

If care instructions don't deliver the expected results, cease cleaning method immediately and contact Baresque for assistance.

---

**Additional Comments** Stacy Garcia New York Collection

---

# TOP NOTCH

Wallcoverings » Commercial Wallcoverings

---

## Colour & Finish Options