

# HILLSIDE

Wallcoverings » Commercial Wallcoverings



Brand: **Koroseal**

# HILLSIDE

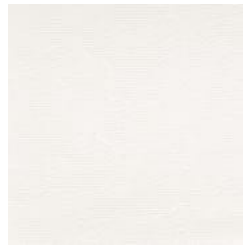
Wallcoverings » Commercial Wallcoverings

**COLOURWAY  
CARD**

COLOURWAY CARD

**COLOURWAY  
CARD**

COLOURWAY CARD



HS21--01 EARNEST



HS21-02 CATSKILL



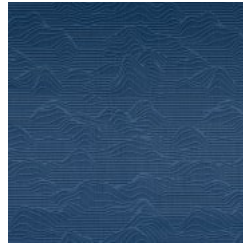
HS21-03 CHALET



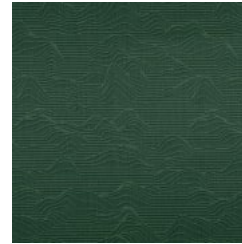
HS21-04  
ADIRONDACK



HS21-05  
EXPECTATION



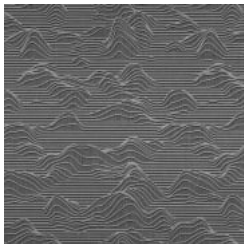
HS21-06 LAKESIDE



HS21-07 SHERWOOD



HS21-08 MYSTERY



HS21-09 SMOKIE



# HILLSIDE

Wallcoverings » Commercial Wallcoverings

Hillside is a pattern created by contoured silhouettes. The rise and fall of the horizontal lines create the curves of a landscape in 9 colourways.

✓ **Mildew Resistant**

**Description** Our reach for well-being inspires us to step outside and bring what we find indoors. Rooted in the Zen tradition of many cultures, Hillside's rhythmic feel of contours created within the landscape bring calm in a repetition of what is expected.

Hillside's colour line includes soothing neutral and midtones, while diving deeper with its rich gold, cool blue, and lavish green, all inspired by many of the marvellous sights across the country.

**Roll Size** 132/137cm x 27.4m - Available by the lineal metre.

**Weight** 20oz (452g/m<sup>2</sup>)

**Composition** Type II Wallcovering  
20 oz. ply Non -Woven backing

**Pattern Repeat Size** 60.9 cm V 132 cm H

**Environmental Info** Formaldehyde free  
Heavy metals free  
Perfluorooctanoic acid free  
No solvent inks  
Low VOC emissions. Any VOCs dissipate quickly (faster than paint) through normal ventilation and have no recognized adverse impact on indoor air quality.  
Durability means products do not need to be replaced regularly due to wear and tear and being cleanable, vinyl products are ideal for helping keep commercial environments clean of bacteria.  
Baresque will only deal with vinyl manufacturers that comply with applicable state and federal regulations, provide a factory that is safe and clean for its employees to work in, recycle scrap and inks during the manufacturing process to minimize waste related to production.

# HILLSIDE

Wallcoverings » Commercial Wallcoverings

---

Fire Rating	<p>Tested in accordance with AS ISO 9705 2003 for the purpose of determining the Group Number classification as required by the Building Code of Australia for the control of fire spread on interior wall and ceiling linings.</p> <p>The result achieved was: Classification - Group 2 Specific Extinction - Less than 250m<sup>2</sup>/kg</p>
Warranty	<p>5-year warranty. Visit <a href="https://baresque.com.au/warranty">baresque.com.au/warranty</a> for complete details.</p>
Lead Time	<ul style="list-style-type: none"><li>• 2-weeks (approx.) from Wednesday, subject to stock availability.</li><li>• Additional 1-week for Western Australia.</li><li>• Express delivery is available subject to a surcharge. Contact Baresque for details and pricing.</li></ul>
Suggested Installation	<p>Non-reverse hang alternate drops/straight across match/overlap and double cut.</p> <p>Baresque recommends and supplies Roman brand adhesives and primers.</p>
Care Instructions	<p>Use cloth with any of the following in preferred order of use:</p> <ol style="list-style-type: none"><li>1: Clear warm water</li><li>2: Mild solution of liquid detergent and warm water</li><li>3: Isopropyl Alcohol (a.k.a. rubbing alcohol)</li></ol> <p>Remove any detergent with a clean, damp cloth. Gently pat dry.</p> <p>For more difficult stains, dampen a soft white cloth with a solution of household bleach (10% bleach / 90% water). Rub gently.</p> <p>Rinse with a water dampened cloth to remove bleach concentration.</p> <p>Do not use solvent based or concentrated abrasive cleaning agents, lacquer thinners or nail polish remover as these may cause discolouration over a period of time.</p> <p>Always test in an inconspicuous area first.</p> <p>If care instructions don't deliver the expected results, cease cleaning method immediately and contact Baresque for assistance.</p>
Additional Comments	<p>Hillside is part of the Countors Collection.</p>

---

# HILLSIDE

Wallcoverings » Commercial Wallcoverings

---

## Colour & Finish Options