

CABRINI

Wallcoverings » Commercial Wallcoverings



Brand: **Koroseal**

Designed By: **Stacy Garcia**

Applications: **Walls**

1300 306 399

info@baresque.com.au

baresque.com.au

1 of 5

CABRINI

Wallcoverings » Commercial Wallcoverings



CABRINI

Wallcoverings » Commercial Wallcoverings

Cabrini is a wallcovering with an organic pattern that's available in 8 colourways.

✓ **Mildew Resistant**

✓ **Bleach Cleanable**

Description	Inspired by the delicate and organic forms found in nature, Cabrini was interpreted through simple graphic lines. It is a mid-scale pattern with a subtle canvas emboss featuring modern and wavy linework. Cabrini's earthy and captivating palette of soothing neutrals, muted blues and greens, and a touch of chestnut brown will add sophistication to any room.
Composition	Type II Wallcovering 20 oz. ply Woven (Osnaburg) backing
Environmental Info	Formaldehyde free Heavy metals free Perfluorooctanoic acid free No solvent inks Low VOC emissions. Any VOCs dissipate quickly (faster than paint) through normal ventilation and have no recognized adverse impact on indoor air quality. Durability means products do not need to be replaced regularly due to wear and tear and being cleanable, vinyl products are ideal for helping keep commercial environments clean of bacteria. Baresque will only deal with vinyl manufacturers that comply with applicable state and federal regulations, provide a factory that is safe and clean for its employees to work in, recycle scrap and inks during the manufacturing process to minimize waste related to production.
Pattern Repeat Size	60.9 cm V 132 cm H
Roll Size	132/137cm x 27.4m - Available by the lineal metre.
Weight	20oz (452g/m ²)
Fire Rating	Tested in accordance with AS ISO 9705 2003 for the purpose of determining the Group Number classification as required by the Building Code of Australia for the control of fire spread on interior wall and ceiling linings. The result achieved was: Classification - Group 2 Specific Extinction - Less than 250m ² /kg

CABRINI

Wallcoverings » Commercial Wallcoverings

Lead Time	<ul style="list-style-type: none">• 2-weeks (approx.) from Wednesday, subject to stock availability.• Additional 1-week for Western Australia.• Express delivery is available subject to a surcharge. Contact Baresque for details and pricing.
-----------	---

Suggested Installation	<p>Reverse hang / overlap and double cut.</p> <p>Baresque recommends and supply Roman brand adhesives and primers.</p>
------------------------	--

Care Instructions	<p>Use cloth with any of the following in preferred order of use:</p> <ol style="list-style-type: none">1: Clear warm water2: Mild solution of liquid detergent and warm water3: Isopropyl Alcohol (a.k.a. rubbing alcohol) <p>Remove any detergent with a clean, damp cloth. Gently pat dry.</p> <p>For more difficult stains, dampen a soft white cloth with a solution of household bleach (10% bleach / 90% water). Rub gently.</p> <p>Rinse with a water dampened cloth to remove bleach concentration.</p> <p>Do not use solvent based or concentrated abrasive cleaning agents, lacquer thinners or nail polish remover as these may cause discolouration over a period of time.</p> <p>Always test in an inconspicuous area first.</p> <p>If care instructions don't deliver the expected results, cease cleaning method immediately and contact Baresque for assistance.</p>
-------------------	---

Warranty	5-year warranty. Visit baresque.com.au/warranty for complete details.
----------	--

Colour & Finish Options

**COLOURWAY
CARD**

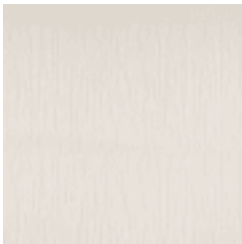
COLOURWAY CARD

**COLOURWAY
CARD**

COLOURWAY CARD



SG200-1 DOVER



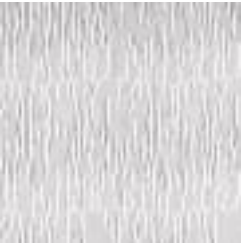
SG200-2 WAFER



SG200-3 GLACIER



SG200-4 CHESTNUT



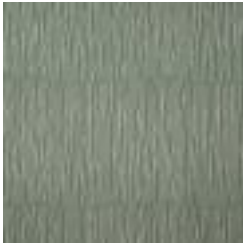
SG200-5 DOMINO



SG200-6 STONE
WALL



SG200-7 ZINC



SG200-8 PINE