

# CALLIGRAPHY CASCA

Wallcoverings » Decorative Wallcoverings



Brand: **Omexco**

Applications: **Walls**

1300 306 399

[info@baresque.com.au](mailto:info@baresque.com.au)

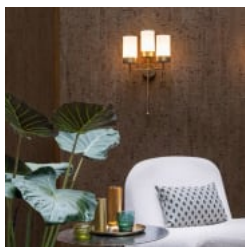
[baresque.com.au](http://baresque.com.au)

1 of 5

# CALLIGRAPHY CASCA

Wallcoverings » Decorative Wallcoverings

---



# CALLIGRAPHY CASCA

Wallcoverings » Decorative Wallcoverings

Calligraphy is a Omexco classic design revisited in a new symphony of nature-inspired colours.

✓ **Light Resistant**

✓ **Ecological**

✓ **Seamless Joins**

## Description

Omexco's latest collection CASCA encapsulates the passion for the most exquisite gifts that nature has to offer.

A curated selection of the most stunning variations of mulberry and cork oak barks is showcased page after page, exposing the richly sensuous experience of these soft and matt natural textures.

Playing into the irregular and authentic quality of materials, artisans are able to give shape to inspire designers.

The choice to work with cork - its use prolongs the tree's longevity - reflects our commitment towards a more virtuous industry and allows us to honour our environmental values.

The designs are available in a harmonious palette of nature-inspired shades, where warm earth tones are brought to life by bolder accents, like a lapis lazuli blue.

## Composition

Cork

## Environmental Info

The Omexco brand has a sustainable policy that limits their impact on the environment on different levels.

Renewable energy is used for the production process and the company opts for non-harmful base, renewable materials such as cork or recycled sari silk and recycled fibres are used as much as possible.

Omexco has a long history of being eco-conscious trying to reduce waste by custom cutting every order and obtaining certificates for sustainable forestry.

## Roll Size

91cm wide - Available by the lineal metre

## Weight

Approx. 202 g/m<sup>2</sup>

## Fire Rating

Tested in accordance with AS ISO 9705 2003 for the purpose of determining the Group Number classification as required by the Building Code of Australia for the control of fire spread on interior wall and ceiling linings.

The result achieved was:  
Classification - Group 2  
Specific Extinction - Less than 250m<sup>2</sup>/kg

# CALLIGRAPHY CASCA

Wallcoverings » Decorative Wallcoverings

---

Lead Time	<ul style="list-style-type: none"><li>• 2-weeks (approx.) from Wednesday, subject to stock availability.</li><li>• Additional 1-week for Western Australia.</li><li>• Express delivery is available subject to a surcharge. Contact Baresque for details and pricing.</li></ul>
-----------	---

---

Suggested Installation	<p>Non-reverse hang / butt join.</p> <p>Cork needs to be installed with care using a rubber roller (not a brush or a plastic pallet) so that loose corners/edges remain limited, even and barely visible.</p> <p>To remove irregularities glue loose parts onto the backing with a small amount of non-staining cellulose adhesive.</p> <p>Baresque recommends and supply Roman brand adhesives and primers.</p>
------------------------	--

---

Care Instructions	<p>Always use a clean, white, soft cloth.</p> <p>Remove liquid stains immediately using a dry cloth. Avoid hard scrubbing.</p> <p>For tougher stains, dampen the cloth with warm water or a weak dilution of liquid detergent and apply being careful not to soak the material. Always work towards the centre of the stain so as to avoid further spreading.</p> <p>Remove any detergent with a clean, damp cloth. Gently pat dry.</p> <p>Always test in an inconspicuous area first.</p>
-------------------	--

---

Warranty	2-year warranty. Visit <a href="https://baresque.com.au/warranty">baresque.com.au/warranty</a> for complete details.
----------	--

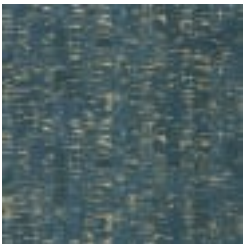
---

# CALLIGRAPHY CASCA

Wallcoverings » Decorative Wallcoverings

## Colour & Finish Options

**TIPCARD**



CAS81



CAS82



CAS83



CAS84



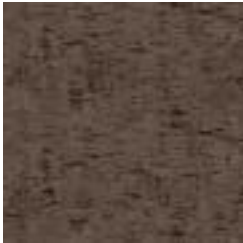
CAS85



CAS86



CAS87



CAS88