

# OASIS CONCERTEX

Fabrics » Vinyl and Faux Leather Fabrics

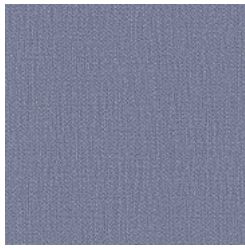


Brand: **Concertex**

# OASIS CONCERTEX

Fabrics » Vinyl and Faux Leather Fabrics

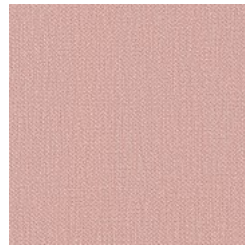
## COLOURWAY CARD



BAY



BEACH



BLUSH



CADET

COLOURWAY CARD



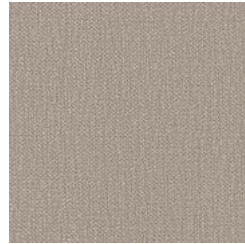
COCONUT



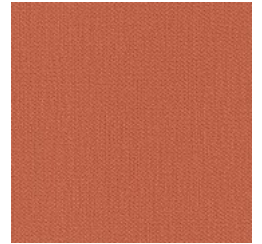
EGGPLANT



MARGARITA



MINERAL



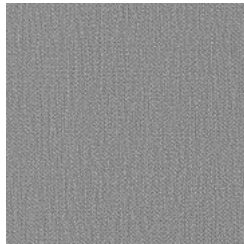
PEONY



SEA GREEN



SHORE



SMOKE

# OASIS CONCERTEX

Fabrics » Vinyl and Faux Leather Fabrics

Oasis's colour palette is a harmonious blend of rich and inviting hues that create a visual tapestry of warmth and serenity.

✓ **Bleach Cleanable**

✓ **Outdoor Suitable**

**Description** Good design is evident, great design is transparent. Far more than purely aesthetic, our Oasis pattern has been designed to function and wear. With indoor and outdoor applications, the fabric's lightfastness and performance might not be visible to the eye but shines through soothing colours that do not fade despite the weather.

**Roll Size** 137cm x 22.8m - Available by the lineal metre.

**Composition** Phthalate free vinyl, 100% polyester backing

**Abrasion** 300,000 + Double Rubs (Wyzenbeek)

**Environmental Info**

- PVC free
- Phthalate Free
- DMF Free
- No added fire retardant
- Anti-Bacterial
- Healthier Hospitals compliant
- Complies with CAL01351

**Fire Rating**

- Tested in accordance with AS1530.3
- Spread of Flame Index - 0
- Smoke Developed Index - 5

**Warranty** 2-year warranty. Visit [baresque.com.au/warranty](https://baresque.com.au/warranty) for complete details.

**Lead Time**

- 2-weeks (approx.) from Wednesday, subject to stock availability.
- Additional 1-week for Western Australia.
- Express delivery is available subject to a surcharge. Contact Baresque for details and pricing.

# OASIS CONCERTEX

Fabrics » Vinyl and Faux Leather Fabrics

---

## Care Instructions

### Removal of Stains:

**Wet Stain:** Gently blot away any extra fluid, apply a cleaner lightly to a soft cloth and gently work into the stained area. Wipe away using a damp cloth. We recommend cleaning of stains with a light application of the cleaning solution. Avoid heavy application of cleaning agents and saturation of the fabric as this can cause damage and leave marks.

**Dry Stains:** Use a soft bristle brush to gently remove any remaining accumulated matter. If a stain cannot be removed by these methods, a solution of 10 parts water to 1 part bleach can be used. Never use full strength bleach.

Apply the solution to the stained area and allow it to linger on the fabric for approximately 15 minutes. The bleac solution must be thoroughly rinsed away wit clean water and dried using a soft towel.

Any cleaning agent should always be tested on an area of the piece that is not readily visible before being applied to the stained area.

---

# OASIS CONCERTEX

**Fabrics** » Vinyl and Faux Leather Fabrics

---

## Colour & Finish Options