

# HOUNDSTOOTH

Fabrics » Woven Fabrics



Brand: **Crypton**

1300 306 399

[info@baresque.com.au](mailto:info@baresque.com.au)

[baresque.com.au](http://baresque.com.au)

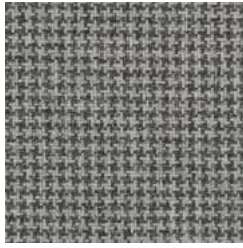
1 of 5

# HOUNDSTOOTH

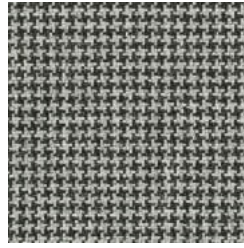
Fabrics » Woven Fabrics



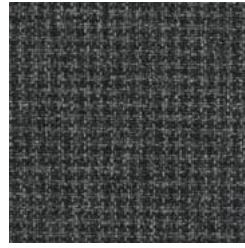
1011226 Frost



1011227 Boulder



1011228 Phantom



1011229 Abyss



1011230 Truffle



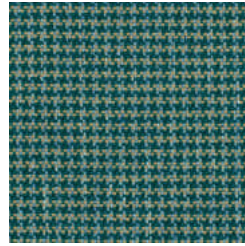
1011231 Argyle



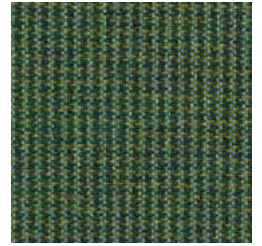
1011232 Marina



1011233 Vortex



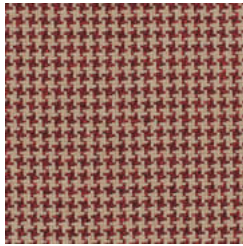
1011234 Oasis



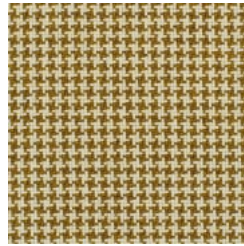
1011235 Peacock



1011236 Forest



1011237 Garnet



1011238 Butterscotch



1011239 Oat

# HOUNDSTOOTH

Fabrics » Woven Fabrics

A striking and handsome check true to its namesake. Houndstooth is available in fourteen tailored hues with a strong menswear influence.

✓ **Moisture Barrier**

✓ **Bleach Cleanable**

**Description** Houndstooth is a Supreen Permanent Moisture Barrier fabric with a classic pattern that's available in 14 colourways.

**Roll Size** 137cm wide x 45.7m - Available by the full roll only

**Weight** 576.3 g/m<sup>2</sup>

**Composition** 91% Polyester  
7% Polyurethane  
2% Silicone

**Abrasion** 100,000 double rubs (ASTM D4157)

**Finishes** Supreen

**Fire Rating** This product can be treated with a fire retardant that will ensure it meets Australian Standard 1530.3. Contact Baresque for details.

**Warranty** 2-year warranty. Visit [baresque.com.au/warranty](https://baresque.com.au/warranty) for complete details.

**Lead Time**

- 2-weeks (approx.) from Wednesday, subject to stock availability.
- Additional 1-week for Western Australia.
- Express delivery is available subject to a surcharge. Contact Baresque for details and pricing.

# HOUNDSTOOTH

Fabrics » Woven Fabrics

---

## Care Instructions

Supreen™ is a revolutionary new performance upholstery material, that marries cutting-edge woven and coated technology to create a unique liquid-barrier textile

Regular Cleaning and Maintenance (Dirt • Dust • Grime)

Regular vacuuming is recommended.

Spot clean the soiled area with mild soap and water, then wipe or rinse with fresh water.

Food Stains / Oils (Mustard • Ketchup • Chocolate • Coffee / Tea • Salad Dressing)

Rub the affected area with a soft cloth or sponge using a 1:10 solution of dish soap and water.

For stubborn stains follow up with a mild solution of Oxi Clean™. Wipe or rinse with fresh water

Difficult Stains (Eye Shadow • Mascara • Lipstick • Crayon • Grease)

Rub the affected area with a soft cloth or sponge using a 1:10 solution of dish soap and water.

For stubborn stains follow up with a mild solution of Oxi Clean™. Wipe or rinse with fresh water.

Healthcare (Blood • Urine • Betadine)

Rub the affected area with a soft cloth or sponge using a 1:10 solution of dish soap and water.

For stubborn stains follow up with a mild solution of Oxi Clean™. Wipe or rinse with fresh water.

---

# HOUNDSTOOTH

Fabrics » Woven Fabrics

---

## Colour & Finish Options