

IKAT

Fabrics » Woven Fabrics



Brand: **Crypton**

IKAT

Fabrics » Woven Fabrics



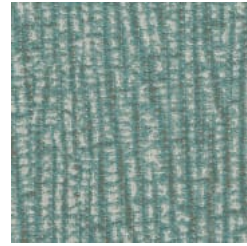
COLOURWAY CARD



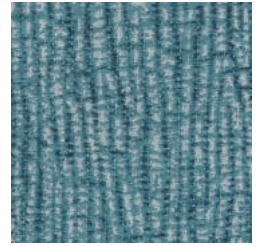
1011905 Seaglass



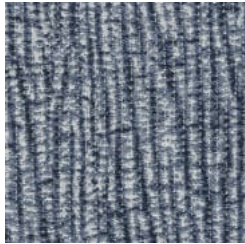
1011906 Mermaid



1011907 Mirage



1011908 Cerulean



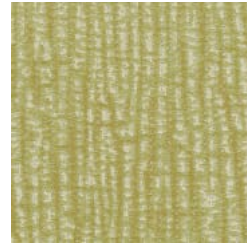
1011909 Federal



1011910 Mulberry



1011911 Coral



1011912 Chartreuse



1011913 Glacier



1011914 Vanilla



1011915 Beach



1011916 Marble

IKAT

Fabrics » Woven Fabrics



Ikat is a distinctive and captivating design with an illusion of fluid movement in the patterns. Available in 12 colourways.

● Bleach Cleanable

Description	Variegated stripes with faded edges float upon Ikat's white-washed ground. Ikat is available in twelve organic shades with an emphasis on soft neutrals and soothing aquas.
Roll Size	137cm wide x 45.7m - Available by the full roll only
Weight	542.4 g/m2
Composition	100% Polyester - Crypton Backing
Abrasion	100,000 double rubs (ASTM D4157)
Finishes	Crypton
Pattern Repeat Size	17.5 cm - H 17.7 cm - V

Environmental Info

Greenguard Certifications contributes towards LEED credits for low-emitting furniture and ensures compliance with Business and Institutional Furniture Manufacturers Association (BIFMA) X7.1 standard and BIFMA e3 credit 7.6.1.

Greenguard Gold Certification standard includes:

* Health-based criteria for additional chemicals and requires lower total VOC emissions levels to help ensure that products are acceptable for use in environments like schools and healthcare facilities.

* Products that also comply with requirements of the state of California's Department of Public Health (CDPH) "Standard Method for the Test and Evaluation of Volatile Organic Chemical Emissions from Indoor Sources Using Environmental Chambers, Version 1.2 (2017)" (also know as California Section 01350).

* Products that are compliant with the BIFMA X7.1 standard and BIFMA e3 credits 7.6.1, 7.6.2, and 7.6.3.

Fire Rating

Tested in accordance with AS1530.3

Spread of Flame Index - 0

Smoke Developed Index - 5

Warranty

2-year warranty. Visit baresque.com.au/warranty for complete details.

Lead Time

- 2-weeks (approx.) from Wednesday, subject to stock availability.
- Additional 1-week for Western Australia.
- Express delivery is available subject to a surcharge. Contact Baresque for details and pricing.

Care Instructions

Mix 5 parts water with 1 part of an enzyme laundry detergent to have a mixture that works well on all stains.

Most liquid spills simply blot off the surface with a dry towel. If a stains remains, follow these simple steps:

1. Remove excess soil, and apply the soap mixture on the stained area
2. Allow solution to remain on stain for 1 minute
3. Blot up the stain with a dry, clean towel, rinse any remaining soap and blot the area again

Repeat these steps if a spot still remains. If agitation is necessary, spray the stained area and work the stain using a soft brush or edge of spoon from outside of spot toward the middle. Blot and rinse to remove any soap.