

TAHITIAN LINEN

Wallcoverings » Commercial Wallcoverings



Brand: **Bolta**

TAHITIAN LINEN

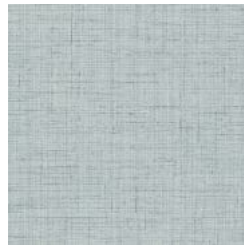
Wallcoverings » Commercial Wallcoverings

COLOURWAY CARD

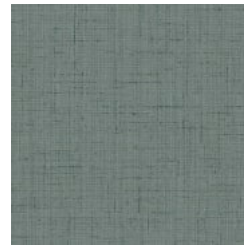
COLOURWAY CARD



BB-TL-01 DENIM



BB-TL-02 PACIFIC



BB-TL-03 EMERALD



BB-TL-04 SLATE



BB-TL-05 CLOUD



BB-TL-06 ICE



BB-TL-07 PEBBLE



BB-TL-08 FLINT



BB-TL-09 IVORY



BB-TL-10 SAND



BB-TL-11 KHAKI



BB-TL-12 COFFEE



BB-TL-13 HORSE HAIR



BB-TL-14 FLAX



BB-TL-15 KRAFT



BB-TL-16
TERRACOTTA

TAHITIAN LINEN

Wallcoverings » Commercial Wallcoverings

Tahitian Linen is a commercial wallcovering with a linen look that's available in 16 colourways.

✓ **Low VOC**

✓ **Anti-Microbial**

✓ **Phthalate Free**

Description

It is no surprise that organic shapes and soft lines sit atop all design trends as the world around us also mellows and connects more with nature.

Tahitian Tapa's painterly, perfectly imperfect fine lines derive from The Islands of Tahiti, where the mountain peaks ascend dramatically inspiring artists and designers alike.

Celebrating this paradise on earth, Tahitian Tapa and Tahitian Linen pay through a carefully curated colour palette. For each Tahitian Tapa, there is a Tahitian Linen that compliments.

Roll Size

137cm wide x 27.4m - Available by the lineal metre

Weight

452 g/m² - 20 oz

Composition

Type II Wallcovering

Backing: Osnaburg

Environmental Info

Formaldehyde free

Heavy metals free

Perfluorooctanoic acid free

No solvent inks

Low VOC emissions. Any VOCs dissipate quickly (faster than paint) through normal ventilation and have no recognized adverse impact on indoor air quality.

Durability means products do not need to be replaced regularly due to wear and tear and being cleanable, vinyl products are ideal for helping keep commercial environments clean of bacteria.

Baresque will only deal with vinyl manufacturers that comply with applicable state and federal regulations, provide a factory that is safe and clean for its employees to work in, recycle scrap and inks during the manufacturing process to minimize waste related to production.

TAHITIAN LINEN

Wallcoverings » Commercial Wallcoverings

Fire Rating Tested in accordance with AS ISO 9705 2003 for the purpose of determining the Group Number classification as required by the Building Code of Australia for the control of fire spread on interior wall and ceiling linings.

The result achieved was:
Classification - Group 2
Specific Extinction - Less than 250m²/kg

Warranty 5-year warranty. Visit [baresque.com.au/warranty](https://www.baresque.com.au/warranty) for complete details.

Lead Time

- 2-weeks (approx.) from Wednesday, subject to stock availability.
- Additional 1-week for Western Australia.
- Express delivery is available subject to a surcharge. Contact Baresque for details and pricing.

Suggested Installation Non-reverse hang alternate drops/straight across match/overlap and double cut.
Baresque recommends and supplies Roman brand adhesives and primers.

Care Instructions Use cloth with any of the following in preferred order of use:

- 1: Clear warm water
- 2: Mild solution of liquid detergent and warm water
- 3: Isopropyl Alcohol (a.k.a. rubbing alcohol)

Remove any detergent with a clean, damp cloth. Gently pat dry.

For more difficult stains, dampen a soft white cloth with a solution of household bleach (10% bleach / 90% water). Rub gently.

Rinse with a water dampened cloth to remove bleach concentration.

Do not use solvent based or concentrated abrasive cleaning agents, lacquer thinners or nail polish remover as these may cause discolouration over a period of time.

Always test in an inconspicuous area first.

If care instructions don't deliver the expected results, cease cleaning method immediately and contact Baresque for assistance.

Additional Comments Inherent anti-microbial protection
Withstands hospital-grade cleaners & disinfectants.

TAHITIAN LINEN

Wallcoverings » Commercial Wallcoverings

Colour & Finish Options