

ELVERUM

Wallcoverings » Advanced Wall Protection



Brand: **Versa**

Applications: **Walls**

1300 306 399

info@baresque.com.au

baresque.com.au

1 of 4

ELVERUM

Wallcoverings » Advanced Wall Protection

Elverum is a commercial wallcovering with a emboss pattern, that's available in 16 colourways.

✓ **High Performance**

✓ **Bleach Cleanable**

✓ **Chemical Resistant**

Description

Elverum combines a chiselled emboss with a multicolour striation to bring dimension to the walls. Available in a diverse 16 sku palette inspired by Earth's minerals.

Versa's Vantage III is superior wall protection with evo PVC-free technology. This 33 oz material provides specifiers choice in material without compromising the beauty, quality, and durability of the product. Vantage III is constructed of olefin composite, contains 30% recycled content, and exceeds Type III performance standards. Engineered for heavy traffic spaces, it is scratch, puncture, tear, and stain resistant.

Composition

Extra thick vinyl face on a drill fabric backing Equivalent to 33oz (746 g/m²)

Environmental Info

Formaldehyde free

Heavy metals free

Perfluorooctanoic acid free

No solvent inks

Low VOC emissions. Any VOCs dissipate quickly (faster than paint) through normal ventilation and have no recognized adverse impact on indoor air quality.

Durability means products do not need to be replaced regularly due to wear and tear and being cleanable, vinyl products are ideal for helping keep commercial environments clean of bacteria.

Baresque will only deal with vinyl manufacturers that comply with applicable state and federal regulations, provide a factory that is safe and clean for its employees to work in, recycle scrap and inks during the manufacturing process to minimize waste related to production.

Roll Size

132/137cm x 27.4m - Available by the lineal metre.

Weight

745 gr/m²

Fire Rating

Tested in accordance with AS ISO 9705 2003 for the purpose of determining the Group Number classification as required by the Building Code of Australia for the control of fire spread on interior wall and ceiling linings.

The result achieved was:

Classification - Group 2

Specific Extinction - Less than 250m²/kg

ELVERUM

Wallcoverings » Advanced Wall Protection

- Lead Time**
- 2-weeks (approx.) from Wednesday, subject to stock availability.
 - Additional 1-week for Western Australia.
 - Express delivery is available subject to a surcharge. Contact Baresque for details and pricing.
-

Suggested Installation

Reverse hang / overlap and double cut.

Baresque recommends and supply Roman brand adhesives and primers.

- Care Instructions**
1. Completion:
- Immediately upon completion of installation, installer shall make sure that these products are cleaned and free of any layout marks, excess adhesive or surface blemishes. Remove excess adhesive with methods and materials recommended by the adhesive manufacturer.
2. Clean-Up and Routine Maintenance:
- Rigid Profiles: For general cleaning, use disinfectant cleaner.
- All Purpose Cleaner Heavy Duty: Use a clean, lint-free cloth and wipe clean. Do not use any abrasive cleaning cloths or sponges.
1. Spray products onto profile and wipe with a dampened cloth.
2. Repeat process if stain remains. If cleaning product residue remains, rinse with water.
-

Warranty

5-year warranty. Visit [baresque.com.au/warranty](https://www.baresque.com.au/warranty) for complete details.

ELVERUM

Wallcoverings » Advanced Wall Protection

Colour & Finish Options

COLOURWAY CARD



AFP01-027 Limestone



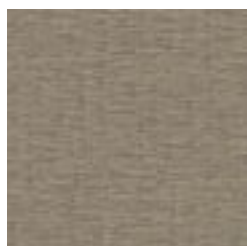
AFP01-031 Travertine



AFP01-067 Marble



AFP01-086 Granite



AFP01-145 Patina



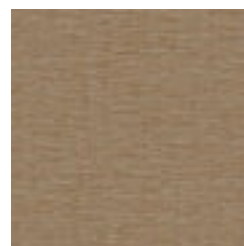
AFP01-269 Aventurine



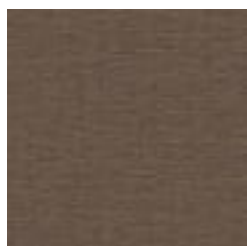
AFP01-313 Provence



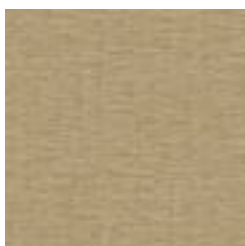
AFP01-340 Riverwalk



AFP01-438 Stucco



AFP01-612 Cinder



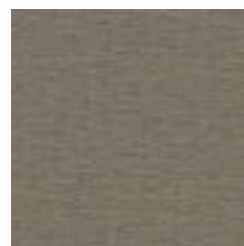
AFP01-725 Sandstone



AFP01-815 Quartzite



AFP01-820 Slate



AFP01-847 Knight



AFP01-861 Onyx



AFP01-895 Stone
Wash