

# MYRTLE

Fabrics » Woven Fabrics



Brand: **Ennis Fabrics**

# MYRTLE

Fabrics » Woven Fabrics

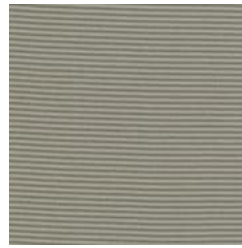
## COLOURWAY CARD



31 POND



90 ASH



97 PEBBLE

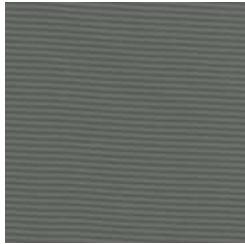


208 GRASS

COLOURWAY CARD



306 SKY



902 CINDER



# MYRTLE

Fabrics » Woven Fabrics

Textured solid woven, made with solution dyed polyester to achieve high UV resistance to be suitable for indoor/outdoor use.

✓ **Water Resistant**

✓ **Anti - Stain**

✓ **Flame Retardant**

✓ **Bleach Cleanable**

✓ **Outdoor Suitable**

**Description** Secret Garden is a curated collection of traditional and modern styles designed to bring the magic and wonder of a secret garden to your home. The perfect indoor & outdoor fabric.

**Roll Size** 137cm x 45.7m - Available by the lineal metre

**Weight** 227.1 g/m<sup>2</sup>

**Composition** 100% Dyed Polyester

**Abrasion** 150,000 double rubs (Wyzenbeek)

**Finishes** Endurepel Shield

**Fire Rating** Tested in accordance with AS1530.3

Spread of Flame Index - 0

Smoke Developed Index - 5

**Warranty** 2-year warranty. Visit [baresque.com.au/warranty](https://www.baresque.com.au/warranty) for complete details.

**Lead Time**

- 2-weeks (approx.) from Wednesday, subject to stock availability.
- Additional 1-week for Western Australia.
- Express delivery is available subject to a surcharge. Contact Baresque for details and pricing.

# MYRTLE

Fabrics » Woven Fabrics

---

## Care Instructions

Always use a clean, white, soft cloth.

Clean in situ using a damp cloth and mild detergent. Sponge down afterwards with a clean, damp cloth.

Using a cloth to pat dry will help eliminate watermarks.

Ensure the pile is brushed back to its natural direction.

Upholstered furniture should be regularly vacuumed or brushed with a soft nylon brush to remove grit or dust, which may damage the pile.

Never use stiff bristles or wire brushes, as they may damage the fabric.

Always test in an inconspicuous area first. If care instructions don't deliver the expected results, cease cleaning method immediately and contact Baresque for assistance.

---

## Additional Comments

Myrtle is part of The Secret Garden Collection

---

# MYRTLE

Fabrics » Woven Fabrics

---

## Colour & Finish Options