

BELLEVUE

Wallcoverings » Commercial Wallcoverings



Brand: **Versa**

BELLEVUE

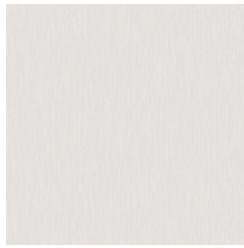
Wallcoverings » Commercial Wallcoverings

COLOURWAY CARD

COLOURWAY CARD



A211-027 STANDING
OVATION



A211-108 DRIFTER



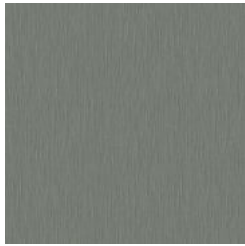
A211-175 CHERRY
WINE



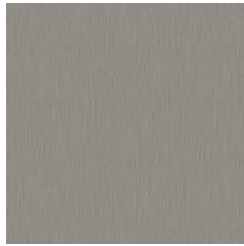
A211-231 MIST



A211-310 SAVVY



A211-337 MARSHLAND



A211-456 STILL LIFE



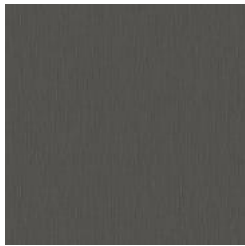
A211-589 COLD
FRONT



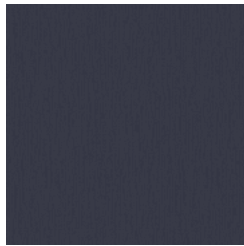
A211-602 CAYENNE



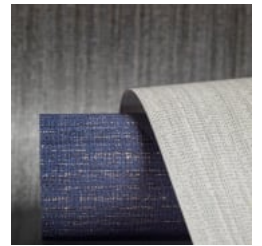
A211-794 DESERT
SAND



A211-823 STOIC



A211-941-UPSTREAM



BELLEVUE

Wallcoverings » Commercial Wallcoverings

Bellevue is a commercial wallcovering with a textured design that's available in 12 colourways. It is low VOC, EPD and HPD certified

✓ **Bleach Cleanable**

✓ **Low VOC**

✓ **EPD Certified**

✓ **HPD Certified**

Description

Bellevue's engaging texture and specks of metallic create an upscale elegance perfect for commercial interiors.

This small-scale design has a pleated emboss giving additional dimensionality to the wallcovering. Deep, moody colours paired with light to medium neutrals rounds out the 12-sku collection.

Roll Size

132/137cm x 27.4m - Available by the lineal metre.

Weight

452 (g/m²)

Composition

Vinyl face on a woven backing 20oz (452 g/m²)

Pattern Repeat Size

Not Applicable

Environmental Info

Formaldehyde free

Heavy metals free

Perfluorooctanoic acid free

No solvent inks

Low VOC emissions. Any VOCs dissipate quickly (faster than paint) through normal ventilation and have no recognized adverse impact on indoor air quality.

Durability means products do not need to be replaced regularly due to wear and tear and being cleanable, vinyl products are ideal for helping keep commercial environments clean of bacteria.

Baresque will only deal with vinyl manufacturers that comply with applicable state and federal regulations, provide a factory that is safe and clean for its employees to work in, recycle scrap and inks during the manufacturing process to minimize waste related to production.

BELLEVUE

Wallcoverings » Commercial Wallcoverings

Fire Rating

Tested in accordance with AS ISO 9705 2003 for the purpose of determining the Group Number classification as required by the Building Code of Australia for the control of fire spread on interior wall and ceiling linings.

The result achieved was:
Classification - Group 2
Specific Extinction - Less than 250m²/kg

Warranty

5-year warranty. Visit baresque.com.au/warranty for complete details.

Lead Time

- 2-weeks (approx.) from Wednesday, subject to stock availability.
 - Additional 1-week for Western Australia.
 - Express delivery is available subject to a surcharge. Contact Baresque for details and pricing.
-

Suggested Installation

Reverse hang / overlap and double cut.
Baresque recommends and supply Roman brand adhesives and primers.

Care Instructions

Use cloth with any of the following in preferred order of use:

- 1: Clear warm water
- 2: Mild solution of liquid detergent and warm water
- 3: Isopropyl Alcohol (a.k.a. rubbing alcohol)

Remove any detergent with a clean, damp cloth. Gently pat dry.

For more difficult stains, dampen a soft white cloth with a solution of household bleach (10% bleach / 90% water). Rub gently.

Rinse with a water dampened cloth to remove bleach concentration.

Do not use solvent based or concentrated abrasive cleaning agents, lacquer thinners or nail polish remover as these may cause discolouration over a period of time.

Always test in an inconspicuous area first.

If care instructions don't deliver the expected results, cease cleaning method immediately and contact Baresque for assistance.

BELLEVUE

Wallcoverings » Commercial Wallcoverings

Colour & Finish Options