

CARVED IN STONE

Wallcoverings » Commercial Wallcoverings



Brand: **York**

1300 306 399

info@baresque.com.au

baresque.com.au

1 of 4

CARVED IN STONE

Wallcoverings » Commercial Wallcoverings

COLOURWAY CARD

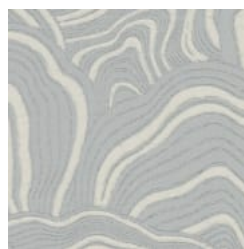
COLOURWAY CARD



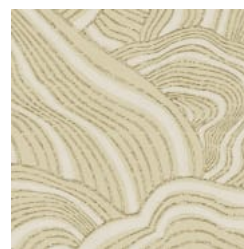
BX5015N LIMESTONE



BX5016N QUARTZ



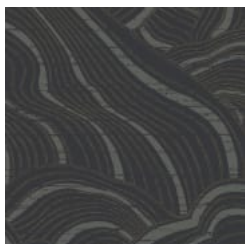
BX5017N GLASSINE



BX5018N CALCITE



BX5019N SEDIMENT



BX5020N OBSIDIAN

CARVED IN STONE

Wallcoverings » Commercial Wallcoverings



Inspired by natural motion and flow within earthen layers with sculptural pearlescent inks complementing its rugged texture

● Bleach Cleanable

● Anti-Microbial

Description	The design focus on natural inspirations turns to the forest floor and the layers of earth to bring motion and pattern back to their purest form. Incorporating textural mineral shimmer and muted burnished finishes add elegant reflections and soft glimmer to balance the irregularities and nuances inherent in organic forms.
Roll Size	68.6cm wide x 8.2m - Available by the full roll only
Weight	452 g/m ²
Composition	Vinyl face on a non-woven backing (452 g/m ²)
Pattern Repeat Size	64 cm V

CARVED IN STONE

Wallcoverings » Commercial Wallcoverings

Fire Rating	<p>Tested in accordance with AS ISO 9705 2003 for the purpose of determining the Group Number classification as required by the Building Code of Australia for the control of fire spread on interior wall and ceiling linings.</p> <p>The result achieved was: Classification - Group 2 Specific Extinction - Less than 250m²/kg</p>
Warranty	<p>5-year warranty. Visit baresque.com.au/warranty for complete details.</p>
Lead Time	<ul style="list-style-type: none">• 2-weeks (approx.) from Wednesday, subject to stock availability.• Additional 1-week for Western Australia.• Express delivery is available subject to a surcharge. Contact Baresque for details and pricing.
Suggested Installation	<p>Non-reverse hang alternate drops/straight across match/overlap and double cut.</p> <p>Baresque recommends and supplies Roman brand adhesives and primers.</p>
Care Instructions	<p>Always use a clean, white, soft cloth.</p> <p>Use cloth with any of the following in preferred order of us:</p> <ol style="list-style-type: none">1: Clear warm water2: Mild solution of liquid detergent and warm water3: Isopropyl Alcohol (a.k.a. rubbing alcohol) <p>Remove any detergent with a clean, damp cloth. Gently pat dry.</p> <p>For more difficult stains, dampen a soft white cloth with a solution of household bleach (10% bleach / 90% water). Rub gently.</p> <p>Rinse with a water dampened cloth to remove bleach concentration.</p> <p>DO NOT USE solvent based or concentrated abrasive cleaning agents, lacquer thinners, nail polish remover as these may cause discolouration over a period of time.</p> <p>Always test in an inconspicuous area first. If care instructions don't deliver the expected results, cease cleaning method immediately and contact Baresque for assistance.</p>
