

# ION XOREL

Wallcoverings » Commercial Wallcoverings



Brand: **Xorel**

1300 306 399

[info@baresque.com.au](mailto:info@baresque.com.au)

[baresque.com.au](http://baresque.com.au)

1 of 8



# ION XOREL

Wallcoverings » Commercial Wallcoverings

## COLOURWAY CARD

COLOURWAY CARD



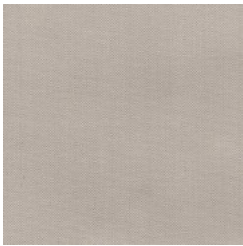
6151 30



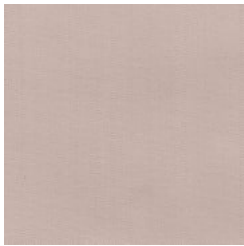
6151 31



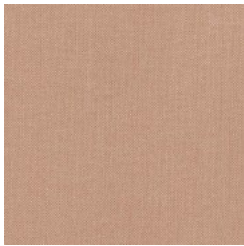
6151 32



6151 33



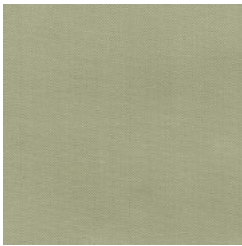
6151 34



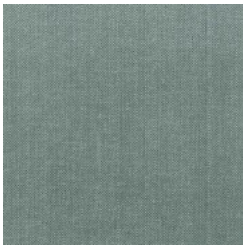
6151 35



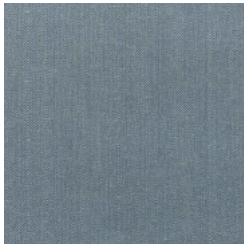
6151 36



6151 37



6151 38



6151 39

# ION XOREL

Wallcoverings » Commercial Wallcoverings



Ion is a sustainable, high-performance textile made from sugarcane. It is biobased and certified by Cradle to Cradle Gold and Living Product Challenge

- Bleach Cleanable
  - Stain Resistant
  - SCS Indoor Advantage Certified
- PVC-Free
  - Cradle to Cradle Certified
  - Sustainable
- Low VOC
  - Living Product Certified

Description	<p>Performance made sustainable for you. A combination of subtle herringbone pattern and relaxed shades of versatile colour.</p> <p>Expanding our line of functional colours made from Biobased Xorel®, Ion acts as an all-around high-performance textile perfect for panels, upholstered walls, upholstery, and wallcovering.</p> <p>An understated texture that creates an effortless minimal look with unmistakable durability and cleanability, built for the demands of the commercial industry.</p>
-------------	--

# ION XOREL

Wallcoverings » Commercial Wallcoverings

Roll Size	Unbacked - 142cm
	X-Protect Wall - 132cm
	X-Protect Sit - 137cm
	Acrylic Backed - 137cm x Approx 60m - available by the lineal metre.
	MINIMUM ORDER for X-Protect Sit - 5 lineal metres
	MINIMUM ORDER for Acrylic Backed - 15 lineal metres
Weight	522 g/m <sup>2</sup> - Wallcovering
	429 g/m <sup>2</sup> - Upholstery
	386 g/m <sup>2</sup> -Panel
Composition	100% Xorel® (50% Biobased PE, 50% PE)
Abrasion	1,000,000 double rubs (Wyzenbeek)
Pattern Repeat Size	Not Applicable
Environmental Info	Xorel's high performance does not come at an environmental cost as it achieves high standards for sustainability.
	All testing/certifying is done by third party independent organizations including:- Scientific Certification Systems (SCS) – Indoor Air Quality (GOLD)- Vincotte – Biobased Content (LEVELS 3/4)- USDA Biobased – Meeting Government Biobased Regulations (PREFERRED)- Cradle to Cradle Institute – Full Lifecycle Assessment (GOLD)- NSF – FACTS certification (NSF 336)
	Xorel products can also help a project achieve multiple credits under LEED for commercial interiors:Material Sourcing (Rapidly Renewable Content)Indoor Air Quality (SCS Indoor Advantage Gold)Material Optimization (Cradle to Cradle Gold)Material Transparency (Healthy Product Declaration)

# ION XOREL

Wallcoverings » Commercial Wallcoverings

Fire Rating	<p>As a wallcovering - Tested in accordance with AS/NZS 3837 and AS 5637.1:2015 for the purposes of Group Number Classification as specified in the NCC Volume One Specification C1.10 Clause 4</p> <p>Classification - Group 1</p> <p>Specific Extinction - Less than 250 m<sup>2</sup>/kg</p> <p>As a fabric - Tested in accordance with AS1530.3</p> <p>Spread of Flame Index - 0</p> <p>Smoke Developed Index - 5</p>
Warranty	<p>7-year warranty. Visit <a href="https://baresque.com.au/warranty">baresque.com.au/warranty</a> for complete details.</p>
Lead Time	<ul style="list-style-type: none"><li>• 5-weeks (approx) from Wednesday subject to stock availability.</li><li>• Additional 1-week for Western Australia.</li><li>• Unbacked 2-3 weeks.</li><li>• Express delivery is available subject to a surcharge. Contact Baresque for details and pricing</li></ul>
Supplied As	<p>Wallcovering   Acoustic Panels   Upholstery</p>
Suggested Installation	<p>As a wallcovering - trim selvedge and butt join.</p> <p>Download the Installation Instructions for details.</p> <p>Baresque recommends and supply Roman brand adhesives and primers.</p>

## How to Specify

### 1. Colour

2. Backing - Available Unbacked or with X-Protect Wall, X-Protect Sit or Acrylic backings.

Xorel Backings guide:

#### **X - Protect Wall**

- 100% Water repellent
- Water / Solvent / Bleach Cleanable (up to 40%). May be cleaned with hospital grade disinfectants.
- Prevents bacterial and fungal strike-through (AATCC 100, ASTM G-21-70, ASTM G-22-76)
- 132 cm wide
- Microvented

#### **Unbacked**

- Acoustically transparent (degree varies by pattern, measured by NRC test)
- Highly stable, ability to self heal, yarns can "move back" into position
- Water / Solvent / Diluted Bleach Cleanable (up to 40%). May be cleaned with hospital grade disinfectants.
- 142.2 cm wide

#### **X-Protect Sit**

- Complete Moisture barrier
  - Water / Solvent / Bleach Cleanable (up to 40%)
  - May be cleaned with hospital grade disinfectants
  - Prevents bacterial and fungal strike-through (AATCC 100, ASTM G-21-70, ASTM G-22-76)
  - 137 cm wide
-

# ION XOREL

Wallcoverings » Commercial Wallcoverings

---

## Care Instructions

Xorel yarns are non-absorbent; dust and stains cannot penetrate them.

Regular maintenance will keep the fabric looking new for many years. Periodic vacuuming will remove dust that may settle between the yarns.

Most stains that dry between the yarns or on the surface can be eliminated by wiping the fabric with a cloth moistened with hot tap water. Some stains may require additional treatment. These stains can be cleaned with a variety of water or solvent based cleaners.

When using solvent based cleaners on paperbacked Xorel fabric, test on a small area first. Residue from these cleaners must be removed with hot water and a clean sponge. After cleaning, towel dry.

Hardened solids can be removed with stiff brush or a sharp-edged instrument without damaging the fabric. However, the brush or sharp instrument should not be used close to seams.

Hospital grade disinfectant cleaners can be safely used on Xorel fabrics. Always follow the directions for the specific brand being used as contact times may vary depending on the product. Diluted bleach solution (up to 40%) can also be used on Xorel for disinfecting purposes.

Always test in an inconspicuous area first. If care instructions don't deliver the expected results, cease cleaning method immediately and contact Baresque for assistance.

---

## Additional Comments    Why Xorel?

Beautiful, Functional and Sustainable

### DURABLE

Stands up to abuse in high-traffic areas. 200,000 to 1 million double rubs on the Wyzenbeek Abrasion Test

### Colourfast / Lightfast

Solution dyed. Colour not affected by cleaning products (including diluted bleach) or light exposure.

### Trackable

Highly tuckable yarns can "move back" into position

### EFFORTLESS MAINTANANCE

### Stain resistant yarns

Water and stains do not penetrate the extruded yarn.

### Easy to Clean

Can be aggressively cleaned with water, solvent, cleaners and diluted bleach.

### Inherently Anti-Microbial

Antibacterial, anti-fungal, anti-staph without the use of added finishes.

### SUSTAINABLE + INDUSTRY PROVEN

### 100% PVC Free

Free of PVC, chlorine, plasticizers, heavy metals and ozone depleting chemicals.

### Biobased

The world's first Biobased high-performance textile. Biobased Xorel is a true plant-based product with significantly reduced carbon footprint.

### Third Party Certified

Cradle to Cradle Gold/Silver, SCS Indoor Air Advantage Gold, NSF - Facts certification (NSF 336), Green Spec, Up to 4 Leed points, Healthy Product Declaration (HPDs) available.

---