

ARCADE

Fabrics » Woven Fabrics



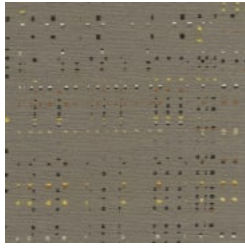
Brand: **Concertex**

ARCADE

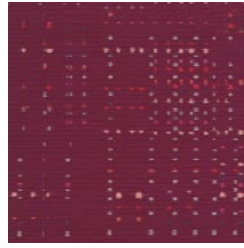
Fabrics » Woven Fabrics

COLOURWAY CARD

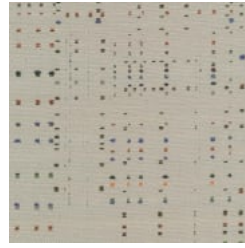
COLOURWAY CARD



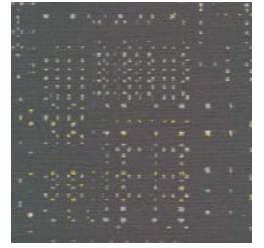
ASTEROID



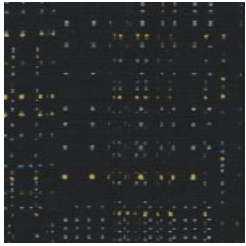
BUBBLE-GUM



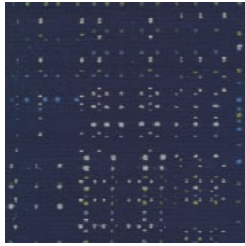
PINBALL



ROBOT



SPACESHIP



SPLASH

ARCADE

Fabrics » Woven Fabrics

Relive playful memories with Arcade! This fun woven fabric is made of 81% recycled polyester, it's bleach cleanable and exceeds 200.000 rubs.

✓ Bleach Cleanable

✓ Stain Repellent

✓ PFAS Free

✓ Water Repellent

Description Your favourite pastimes are making a comeback. An ode to classic childhood games, Arcade is a playful and abstract pattern created by multi-color stripes running on the back of the fabric and showing up sporadically on the front. From Bubble Gum to Pinball, Spaceship, and Asteroid, the Arcade multi-color combinations are a joyful exploration designed to bring out the kid in all of us. Better yet, it is made with 81% recycled polyester, is bleach-cleanable, and passes 200,000+ double rubs. Go on, get playing.

Roll Size 137cm wide x 27.4m - Available by the lineal metre

Composition 81% recycled Polyester, 19% Polyester
Backing: 100% Acrylic

Abrasion 200,000+ Double Rubs (Wyzenbeek)

Pattern Repeat Size 38.4cm V / 37 cm H

Environmental Info PVC/Phthalates free
No added fire retardant
Healthier Hospitals compliant

Warranty 2-year warranty. Visit baresque.com.au/warranty for complete details.

Lead Time

- 2-weeks (approx.) from Wednesday, subject to stock availability.
- Additional 1-week for Western Australia.
- Express delivery is available subject to a surcharge. Contact Baresque for details and pricing.

ARCADE

Fabrics » Woven Fabrics

Care Instructions

Basic Maintenance such as removal of dust and stains will keep your upholstery looking good and performing well for years. Any stains

should be addressed promptly since, the longer the stain remains, the more difficult it will be to remove and untreated stains may

become permanent.

If the stain is wet, gently blot away any extra fluid that might remain on the fabric.

If a stain still remains and additional cleaning is required, a cleaner can be applied lightly to a soft cloth and gently worked into the stained area.

Use clean water to rinse away any remaining cleaning solution.

If the stain is dry, a soft bristle brush can be used to gently remove any remaining accumulated matter. Any loose material can then be vacuumed away and, if a stain remains, cleaning can then be performed as described above.

If a stain cannot be removed by these methods, a solution of 10 parts water to 1 part bleach can be used.

Never use full strength bleach.

ARCADE

Fabrics » Woven Fabrics

Colour & Finish Options