

RECESS

Fabrics » Woven Fabrics



Brand: **Concertex**

1300 306 399

info@baresque.com.au

baresque.com.au

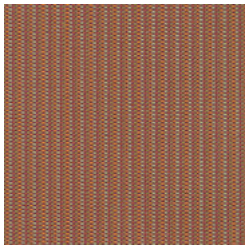
1 of 4

RECESS

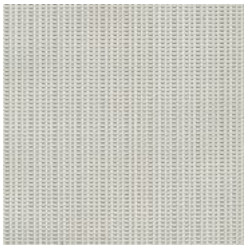
Fabrics » Woven Fabrics

COLOURWAY CARD

COLOURWAY CARD



CORAL



FRESCO



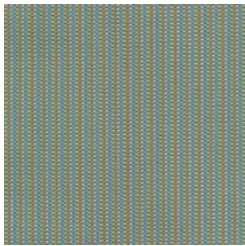
GRAIN



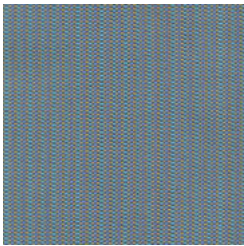
HARBOR



MAHOGANY



MEADOW



QUARRY

RECESS

Fabrics » Woven Fabrics



Bring back carefree playtime vibes with Recess! A vibrant checkerboard pattern that's durable and easy to clean making it perfect for any space.

● Bleach Cleanable

● PFAS Free

● Stain Resistant

Description	<p>Reminisce on your favourite time of day everywhere you go — a moment of respite, an era of freedom, an uninterrupted time to play.</p> <p>Recess holds a special place in our memories and now can hold a special place in your interior. Recess boasts several vibrant colours embedded into a detailed checkerboard pattern.</p> <p>Utilizing Tekloom® technology, it has an impermeable surface, passes one million double rubs, inherently soil and stain-resistant, and is bleach-cleanable.</p>
-------------	--

Roll Size	137cm x 45.7m - Available by the lineal metre
-----------	---

Composition	88% Polyester, 12% Tekloom TPE (Graffiti-Free) Backing: Acrylic
-------------	--

Abrasion	1,000,000+ Double Rubs (Wyzenbeek)
----------	------------------------------------

Pattern Repeat Size	Not Applicable
---------------------	----------------

RECESS

Fabrics » Woven Fabrics

Environmental Info

PVC/Phthalates free
No added fire retardant
Healthier Hospitals compliant

Fire Rating

Tested in accordance with AS1530.3
Spread of Flame Index - 0
Smoke Developed Index - 4

Warranty

2-year warranty. Visit baresque.com.au/warranty for complete details.

Lead Time

- 2-weeks (approx.) from Wednesday, subject to stock availability.
- Additional 1-week for Western Australia.
- Express delivery is available subject to a surcharge. Contact Baresque for details and pricing.

Care Instructions

Always use a clean, white, soft cloth.

Clean in situ using a damp cloth and mild detergent. Sponge down afterwards with a clean, damp cloth.

Using a cloth to pat dry will help eliminate watermarks.

Ensure the pile is brushed back to its natural direction.

Upholstered furniture should be regularly vacuumed or brushed with a soft nylon brush to remove grit or dust, which may damage the pile.

Never use stiff bristles or wire brushes, as they may damage the fabric.

For more difficult stains, dampen a soft white cloth with a solution of household bleach (10% bleach / 90% water). Rub gently. Rinse with a water dampened cloth to remove bleach concentration.

Always test in an inconspicuous area first. If care instructions don't deliver the expected results, cease cleaning method immediately and contact Baresque for assistance.
