

CANOPY

Fabrics » Woven Fabrics



Brand: **Burch**

CANOPY

Fabrics » Woven Fabrics



COLOURWAY CARD



1012159 DRIFTWOOD



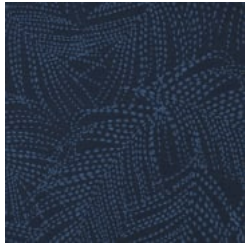
1012160 CREAM



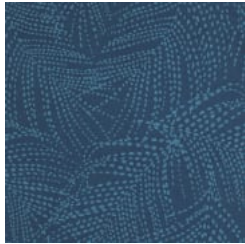
1012161 STRATUS



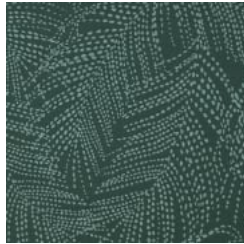
1012162 BOULDER



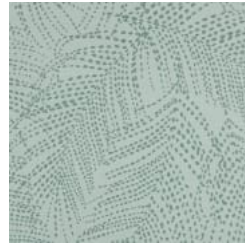
1012163 SAPPHIRE



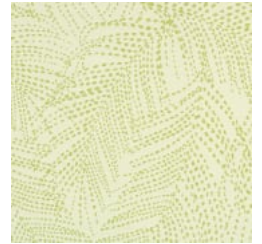
1012164 AZURE



1012165 AQUAMARINE



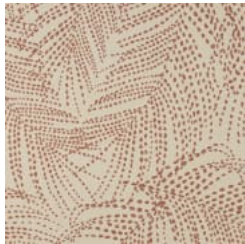
1012166 BREEZE



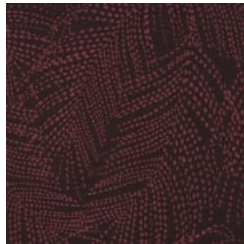
1012167 FOLIAGE



1012168 HONEY



1012169 SIENNA



1012170 SANGRIA



CANOPY

Fabrics » Woven Fabrics

Made of post-consumer recycled polyester, Canopy has an organic natural pattern that's available in 12 colourways.

- ✓ **Crypton**
- ✓ **Stain Resistant**
- ✓ **Greenguard Gold Certified**
- ✓ **Bleach Cleanable**
- ✓ **Water Resistant**

Description Canopy's abstract and whimsical dotted leaf is a breath of fresh air. Twelve enlightened shades featuring Stratus, Foliage, and Breeze are part of this lively palette.

Roll Size 137cm wide X 55m - Available by the lineal metre

Weight 498 g/m²

Composition CRYPTON - 61% Post consumer recycled polyester | 39% Polyester

Abrasion 63,000 double rubs (Wyzenbeek)

Pattern Repeat Size 41.1cm V / 37.6 cm H

Environmental Info Greenguard Certifications contributes towards LEED credits for low-emitting furniture and ensures compliance with Business and Institutional Furniture Manufacturers Association (BIFMA) X7.1 standard and BIFMA e3 credit 7.6.1.

Greenguard Gold Certification standard includes:

- * Health-based criteria for additional chemicals and requires lower total VOC emissions levels to help ensure that products are acceptable for use in environments like schools and healthcare facilities.
- * Products that also comply with requirements of the state of California's Department of Public Health (CDPH) "Standard Method for the Test and Evaluation of Volatile Organic Chemical Emissions from Indoor Sources Using Environmental Chambers, Version 1.2 (2017)" (also know as California Section 01350).
- * Products that are compliant with the BIFMA X7.1 standard and BIFMA e3 credits 7.6.1, 7.6.2, and 7.6.3.

Fire Rating This product can be treated with a fire retardant that will ensure it meets Australian Standard 1530.3. Contact Baresque for details.

Warranty 2-year warranty. Visit [baresque.com.au/warranty](https://www.baresque.com.au/warranty) for complete details.

CANOPY

Fabrics » Woven Fabrics

Lead Time

- 2-weeks (approx.) from Wednesday, subject to stock availability.
 - Additional 1-week for Western Australia.
 - Express delivery is available subject to a surcharge. Contact Baresque for details and pricing.
-

Care Instructions

Always use a clean, white, soft cloth.

Prepare a mixture of 1/3 Napisan and 2/3 Fab. Combine the mixture with water to make a paste about the consistency of soft margarine i.e. not too runny. Apply using a soft bristle brush. Leave for 10 minutes.

Use a brush and clean, warm water to remove the paste being sure to renew the water so that it remains clean.

Never use stiff bristles or wire brushes, as they may damage the fabric. To prevent soil build-up, frequent vacuuming is recommended.

Using a cloth to pat dry will help eliminate watermarks.

For more difficult stains, dampen a soft white cloth with a solution of household bleach (10% bleach / 90% water). Rub gently. Rinse with a water dampened cloth to remove bleach concentration.

Always test in an inconspicuous area first. If care instructions don't deliver the expected results, cease cleaning method immediately and contact Baresque for assistance.

CANOPY

Fabrics » Woven Fabrics

Colour & Finish Options