

RIVULET

Fabrics » Woven Fabrics



Brand: **Burch**

RIVULET

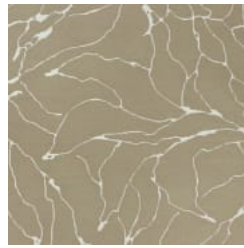
Fabrics » Woven Fabrics



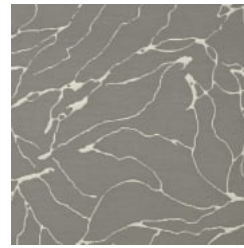
COLOURWAY CARD



1012171 QUARTZ



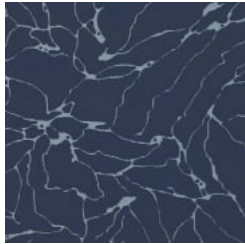
1012172 BEACH



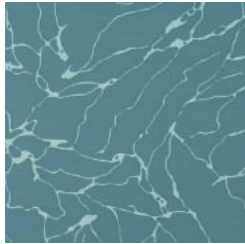
1012173 FOSSIL



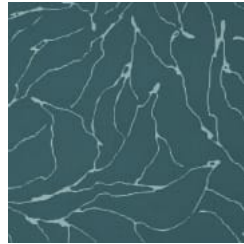
1012174 MARBLE



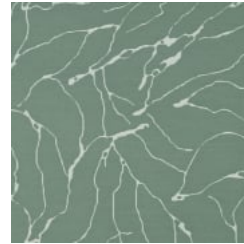
1012175 HUDSON



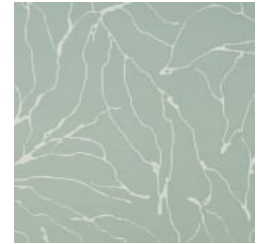
1012176 CAYMAN



1012177 PEACOCK



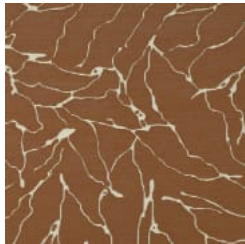
1012178 SEAFOAM



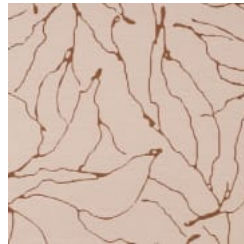
1012179 MIST



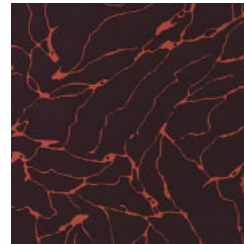
102180 GOLDENROD



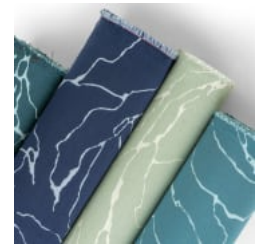
1012181 CLAY



1012182 DUSTY ROSE



1012183 MAGMA



RIVULET

Fabrics » Woven Fabrics

Flourish with Rivulet! A botanical blend minimalist style with rich hues, offering durable and sophisticated nature-inspired patterns.

✓ **Crypton**

✓ **Water Resistant**

✓ **Stain Resistant**

✓ **Bleach Cleanable**

Description A floral stripped down to its purest form, Rivulet cuts a striking silhouette. Rivulet comes alive in a palette of thirteen botanical and coastal-inspired hues.

Roll Size 137cm wide X 55m - Available by the lineal metre

Weight 519 g/m²

Composition CRYPTON - 82% Post consumer recycled polyester | 18% Nylon

Abrasion 102,000 double rubs (Wyzenbeek)

Pattern Repeat Size 72.7cm V / 76.6cm H

Fire Rating This product can be treated with a fire retardant that will ensure it meets Australian Standard 1530.3. Contact Baresque for details.

Warranty 2-year warranty. Visit baresque.com.au/warranty for complete details.

Lead Time

- 2-weeks (approx.) from Wednesday, subject to stock availability.
- Additional 1-week for Western Australia.
- Express delivery is available subject to a surcharge. Contact Baresque for details and pricing.

RIVULET

Fabrics » Woven Fabrics

Care Instructions

Always use a clean, white, soft cloth.

Prepare a mixture of 1/3 Napisan and 2/3 Fab. Combine the mixture with water to make a paste about the consistency of soft margarine i.e. not too runny. Apply using a soft bristle brush. Leave for 10 minutes.

Use a brush and clean, warm water to remove the paste being sure to renew the water so that it remains clean.

Never use stiff bristles or wire brushes, as they may damage the fabric. To prevent soil build-up, frequent vacuuming is recommended.

Using a cloth to pat dry will help eliminate watermarks.

For more difficult stains, dampen a soft white cloth with a solution of household bleach (10% bleach / 90% water). Rub gently. Rinse with a water dampened cloth to remove bleach concentration.

Always test in an inconspicuous area first. If care instructions don't deliver the expected results, cease cleaning method immediately and contact Baresque for assistance.

RIVULET

Fabrics » Woven Fabrics

Colour & Finish Options