

MYTH

Fabrics » Woven Fabrics



Brand: **CF Stinson**

MYTH

Fabrics » Woven Fabrics

COLOURWAY CARD

COLOURWAY CARD



66325 HEIRLOOM



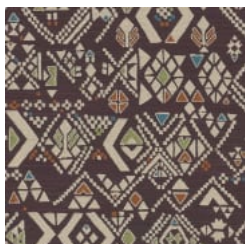
66326 ODIN



66327 VOYAGER



66328 EROS



66329 ECHO

MYTH

Fabrics » Woven Fabrics

Myth is a crypton high performance fabric with a geometric design that's available in 5 colourways.

- ✓ Bleach Cleanable
- ✓ Enhanced soil + stain resistance
- ✓ Crypton
- ✓ Greenguard Gold Certified

Roll Size 137cm wide X 55m - Available by the lineal metre

Weight 845 g/m²

Composition 79% Polyester, 11% Post Consumer Recycled Polyester, 10% Nylon

Abrasion 102,000 double rubs ASTM D-4147

Pattern Repeat Size 47cm V / 35.8 cm H

Environmental Info Greenguard Certifications contributes towards LEED credits for low-emitting furniture and ensures compliance with Business and Institutional Furniture Manufacturers Association (BIFMA) X7.1 standard and BIFMA e3 credit 7.6.1.

Greenguard Gold Certification standard includes:

* Health-based criteria for additional chemicals and requires lower total VOC emissions levels to help ensure that products are acceptable for use in environments like schools and healthcare facilities.

* Products that also comply with requirements of the state of California's Department of Public Health (CDPH) "Standard Method for the Test and Evaluation of Volatile Organic Chemical Emissions from Indoor Sources Using Environmental Chambers, Version 1.2 (2017)" (also know as California Section 01350).

* Products that are compliant with the BIFMA X7.1 standard and BIFMA e3 credits 7.6.1, 7.6.2, and 7.6.3.

Warranty 2-year warranty. Visit baresque.com.au/warranty for complete details.

Lead Time

- 2-weeks (approx.) from Wednesday, subject to stock availability.
- Additional 1-week for Western Australia.
- Express delivery is available subject to a surcharge. Contact Baresque for details and pricing.

MYTH

Fabrics » Woven Fabrics

Care Instructions

Always use a clean, white, soft cloth.

Prepare a mixture of 1/3 Napisan and 2/3 Fab. Combine the mixture with water to make a paste about the consistency of soft margarine i.e. not too runny. Apply using a soft bristle brush. Leave for 10 minutes.

Use a brush and clean, warm water to remove the paste being sure to renew the water so that it remains clean.

Never use stiff bristles or wire brushes, as they may damage the fabric. To prevent soil build-up, frequent vacuuming is recommended.

Using a cloth to pat dry will help eliminate watermarks.

For more difficult stains, dampen a soft white cloth with a solution of household bleach (10% bleach / 90% water). Rub gently. Rinse with a water dampened cloth to remove bleach concentration.

Always test in an inconspicuous area first. If care instructions don't deliver the expected results, cease cleaning method immediately and contact Baresque for assistance.

MYTH

Fabrics » Woven Fabrics

Colour & Finish Options