

LAYERS PANEL

Acoustics » Acoustic Panels



Brand: **Zintra**

Collections: **Layers Panel**

Applications: **Walls**

1300 306 399

info@baresque.com.au

baresque.com.au

1 of 6

LAYERS PANEL

Acoustics » Acoustic Panels



Layers Panel Frost, Greige and Fossil Detail



Layers Panel Frost, Greige and Grass Detail

LAYERS PANEL

Acoustics » Acoustic Panels

Create a personalized acoustic masterpiece with Zintra Layers. Panels that are handmade with care, choose from 30 Colours which are cut into strips and applied to a Zintra backing panel.

Description	<p>Elevate your space with the perfect blend of superior acoustics and unique character, courtesy of Zintra Layers.</p> <p>Discover the innovative technique behind Zintra Layers, where vibrant strips of Colour are meticulously layered onto a Zintra Acoustic panel backer, offering a versatile solution for your acoustic design needs. Whether you're craving a subtle infusion or a bold explosion of Colour, achieve unparalleled acoustics and individuality effortlessly.</p> <p>With an impressive NRC rating of 0.75, Zintra Layers proves to be both cost-effective and adaptable, suitable for a variety of applications. Its easy fabrication, installation, and pinnability make it a practical choice for any project.</p>
Composition	<p>Zintra Acoustic Panel - 100% Solution Dyed (Colour Through) Polyester</p> <p>12mm (1/2") - Density 2.4 kg /m² 0.5 lb/ft²</p>
Sustainability	<p>Zintra is made from 100% recyclable materials.</p> <ul style="list-style-type: none">• 60% post-consumer recycled content from PET bottles.• 35% pre-consumer recycled content from PET chips• 5% polylactic acid (PLA)
Dimensions	<p>2745mm (108") x 1207mm (47.5")</p>
Fire Rating	<p>ASTM-E84 – Class A classification AS ISO 9705 – 2003 – Group 1 classification EN-13501 – B-s2-d0 classification</p>
Supplied As	<p>1 x Layer Panel in selected Colour/s</p>
Assembly & Delivery	<p>Ships Assembled ready for installation. Refer Installation instructions.</p> <p>Recommended 2 People assembly</p> <p>Go to the Technical Documents and download the Installation Guide for more details.</p>

LAYERS PANEL

Acoustics » Acoustic Panels

Suggested Installation

Go to Technical Documents and download the Installation Guide for more details.

Care Instructions

Vacuum to remove dust.

Dab Zintra with a damp clean cloth and mild solution of liquid detergent and warm water. Repeat using only clean water, then pat dry with a lint free cloth.

For difficult stains, use a solution of household bleach (10% bleach / 90% water). To remove the bleach, repeat using a clean, water dampened cloth, then pat dry.

Always test in an inconspicuous area first and if you don't see the expected results, contact us.

Warranty

Visit FAQ for more details.

Customisable

The Zintra Acoustic Solutions range is customisable to your project. Please get in touch with your local contact for details.

Additional Comments

NRC Up to 1.0

How to Specify

1. Select Layers or Layers 3D design
 2. Select Zintra Colour
-

LAYERS PANEL

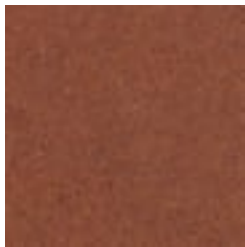
Acoustics » Acoustic Panels

Colour & Finish Options

Zintra 12mm Solid PET



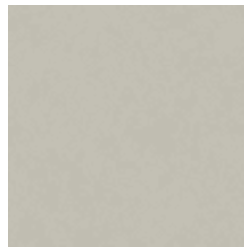
Bark



Brick



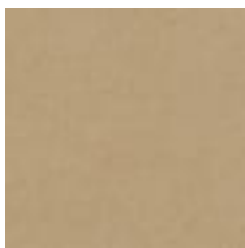
Cadet



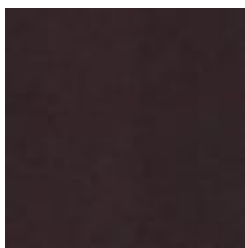
Chambray



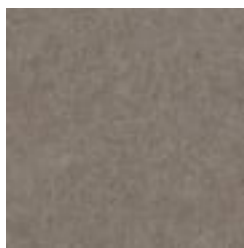
Cobalt



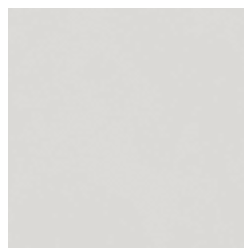
Ecru



Elderberry



Fossil



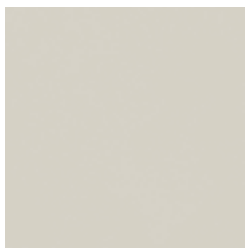
Frost



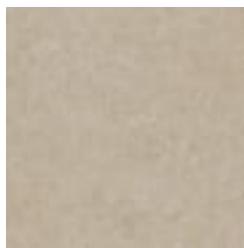
Grass



Greige



Ivory



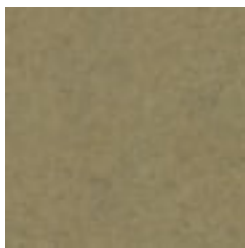
Linen



Malachite



Mandarin



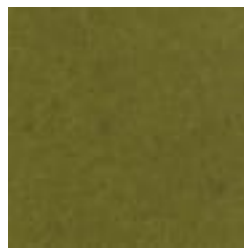
Meadow



Midnight



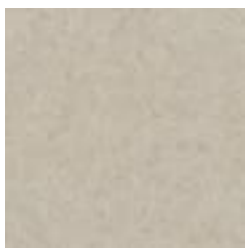
Ochre



Olive



Parchment



Pebble



Pewter



Saffron



Sky



Smoke

LAYERS PANEL

Acoustics » Acoustic Panels



Slate



Storm



Sunshine



Tar



Twilight