

# RATAN KOROSEAL

Wallcoverings » Commercial Wallcoverings



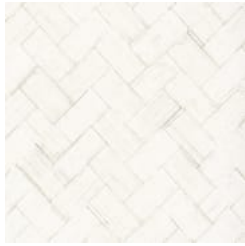
Brand: **Koroseal**

# RATAN KOROSEAL

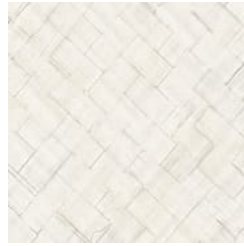
Wallcoverings » Commercial Wallcoverings

## COLOURWAY CARD

COLOURWAY CARD



R321-01 SUN  
BLEACHED



R321-02 WHITEWASH



R321-03 ASHEN



R321-04 NATURAL  
JUTE



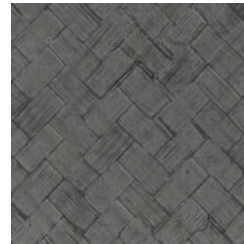
R321-05-HONEY



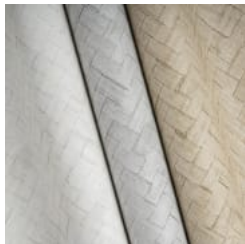
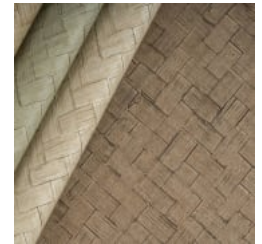
R321-06 SEAGRASS



R321-07 ANTIQUE



R321-08 EBONY



# RATAN KOROSEAL

Wallcoverings » Commercial Wallcoverings

Ratan brings earthy charm with its modern twist on woven raffia. Diagonal texture and ink effects mimic natural variations.

✓ **Bleach Cleanable**

✓ **Stain Resistant**

✓ **Mildew Resistant**

## Description

Inspired by the enduring preference for natural aesthetics, Ratan seamlessly fuses natural warmth and texture, evoking an earthy and rustic charm.

The pattern adapts woven rattan to modern aesthetics with a diagonal weave emboss enhanced by print and ink wipe, mimicking nuanced colour variations found in woven grasses.

## Roll Size

132/137cm x 27.4m - Available by the lineal metre.

## Composition

Vinyl face on a fabric backing Equivalent to 20oz (452 g/m<sup>2</sup>).

## Pattern Repeat Size

Not Applicable

## Environmental Info

Formaldehyde free

Heavy metals free

Perfluorooctanoic acid free

No solvent inks

Low VOC emissions. Any VOCs dissipate quickly (faster than paint) through normal ventilation and have no recognized adverse impact on indoor air quality.

Durability means products do not need to be replaced regularly due to wear and tear and being cleanable, vinyl products are ideal for helping keep commercial environments clean of bacteria.

Baresque will only deal with vinyl manufacturers that comply with applicable state and federal regulations, provide a factory that is safe and clean for its employees to work in, recycle scrap and inks during the manufacturing process to minimize waste related to production.

## Fire Rating

Tested in accordance with AS ISO 9705 2003 for the purpose of determining the Group Number classification as required by the Building Code of Australia for the control of fire spread on interior wall and ceiling linings.

The result achieved was:

Classification - Group 2

Specific Extinction - Less than 250m<sup>2</sup>/kg

## Warranty

5-year warranty. Visit [baresque.com.au/warranty](https://www.baresque.com.au/warranty) for complete details.

# RATAN KOROSEAL

Wallcoverings » Commercial Wallcoverings

---

## Lead Time

- 2-weeks (approx.) from Wednesday, subject to stock availability.
  - Additional 1-week for Western Australia.
  - Express delivery is available subject to a surcharge. Contact Baresque for details and pricing.
- 

## Suggested Installation

Reverse hang / overlap and double cut.  
Baresque recommends and supply Roman brand adhesives and primers.

---

## Care Instructions

Use cloth with any of the following in preferred order of use:

- 1: Clear warm water
- 2: Mild solution of liquid detergent and warm water
- 3: Isopropyl Alcohol (a.k.a. rubbing alcohol)

Remove any detergent with a clean, damp cloth. Gently pat dry.

For more difficult stains, dampen a soft white cloth with a solution of household bleach (10% bleach / 90% water). Rub gently.

Rinse with a water dampened cloth to remove bleach concentration.

Do not use solvent based or concentrated abrasive cleaning agents, lacquer thinners or nail polish remover as these may cause discolouration over a period of time.

Always test in an inconspicuous area first.

If care instructions don't deliver the expected results, cease cleaning method immediately and contact Baresque for assistance.

---

# RATAN KOROSEAL

Wallcoverings » Commercial Wallcoverings

---

## Colour & Finish Options