

# ETCH PANEL VOLTA

Acoustics » Acoustic Panels



Brand: **Zintra**

Collections: **Etch Panel**

Applications: **Walls, Ceilings**

1300 306 399

[info@baresque.com.au](mailto:info@baresque.com.au)

[baresque.com.au](http://baresque.com.au)

1 of 8

# ETCH PANEL VOLTA

**Acoustics** » Acoustic Panels

---



Etch Panel Volta Detail

# ETCH PANEL VOLTA

Acoustics » Acoustic Panels

Explore the possibilities of spatial perception and artistic expression with Zintra Etch 3D panels, Volta design.

- ✓ Acoustic
- ✓ Bleach Cleanable
- ✓ Easy Clean
- ✓ Easy Install

|             |   |
|-------------|---|
| Description | <p>Zintra Etch, where acoustic absorption meets dynamic 3D design. With a range of subtle textures, Zintra Etch brings cutting-edge aesthetics and acoustic functionality to your commercial, hospitality, or institutional interior.</p> <p>Discover the extensive selection of understated to statement Colours in Zintra Etch, allowing you to create a welcoming atmosphere while effectively managing sound. This cost-effective sound and design solution cultivates calming environments, promoting productivity and well-being.</p> <p>Zintra Etch seamlessly integrates with plain Zintra panels, offering versatility in design coordination. You can also explore the option of replicating your unique Etch pattern in Zintra on Zintra, for a truly customised solution.</p> <p>Experience the benefits of Zintra Etch, including pattern matching with seamless hidden joins (excluding VJ Angle and Kaleido). The panel size enables join-free installations from floor to ceiling, making the fitting process effortless.</p> <p><b>Volta:</b> Embark on a visual journey with Etch Volta, where meandering lines and intriguing textures converge in a mesmerizing display of artistic exploration.</p> <p><b>Zintra Etch is available in 15 great designs</b></p> <p>Craze   Cubix   Deviate   Kaleido   Lamella   Reed Bed   Sine   Spectrum   Tessellate   Tetris   Vino   VJ Board Angle   VJ Board Narrow   VJ Board Wide   Volta:</p> <p><b>Etch is a 3mm deep V groove.</b></p> <p>Not suitable as a free standing product.</p> |
|-------------|---|

|             |   |
|-------------|---|
| Composition | <p>Zintra Acoustic Panel - 100% Solution Dyed (Colour Through) Polyester</p> <p>12mm (1/2") - Density 2.4 kg /m² 0.5 lb/ft²</p> |
|-------------|---|

|                |  |
|----------------|--|
| Sustainability | <p>Zintra is made from 100% recyclable materials.</p> <ul style="list-style-type: none"><li>• 60% post-consumer recycled content from PET bottles.</li><li>• 35% pre-consumer recycled content from PET chips</li><li>• 5% polylactic acid (PLA)</li></ul> |
|----------------|--|

|            |   |
|------------|---|
| Dimensions | <p>1219mm (48") x 2743mm (108") x 12mm (½")</p> |
|------------|---|

# ETCH PANEL VOLTA

Acoustics » Acoustic Panels

|                        |  |
|------------------------|--|
| Fire Rating            | ASTM-E84 – Class A classification<br>AS ISO 9705 – 2003 – Group 1 classification<br>EN-13501 – B-s2-d0 classification  |
| Supplied As            | Zintra Etch panel in selected pattern  |
| Fabrication Techniques | Utility knife and CNC with oscillating knife.  |
| Assembly & Delivery    | <p>Ships Flat Pack</p> <p>Install using one of these four common techniques.</p> <ol style="list-style-type: none"><li>1. Direct to the substrate</li><li>2. Z-Clips</li><li>3. Stand Offs</li><li>4. Mechanical Fastener</li></ol> <p>Go to the Technical Documents and download the Installation Guide for more details.</p>   |
| Suggested Installation | Go to Technical Documents and download the Installation Guide for more details.  |
| Care Instructions      | <p>Vacuum to remove dust.</p> <p>Dab Zintra with a damp clean cloth and mild solution of liquid detergent and warm water. Repeat using only clean water, then pat dry with a lint free cloth.</p> <p>For difficult stains, use a solution of household bleach (10% bleach / 90% water). To remove the bleach, repeat using a clean, water dampened cloth, then pat dry.</p> <p>Always test in an inconspicuous area first and if you don't see the expected results, contact us.</p> |
| Warranty               | Visit FAQ for more details.  |
| Customisable           | The Zintra Acoustic Solutions range is customisable to your project. Please get in touch with your local contact for details.  |
| Additional Comments    | NRC 0.45 -0.95   |

# ETCH PANEL VOLTA

**Acoustics** » Acoustic Panels

---

## How to Specify

1. Select Etch design
  2. Select Zintra Colour
-

# ETCH PANEL VOLTA

Acoustics » Acoustic Panels

## Colour & Finish Options

Zintra 12mm Solid PET



Bark



Brick



Cadet



Chambray



Cobalt



Ecru



Elderberry



Fossil



Frost



Grass



Greige



Ivory



Linen



Malachite



Mandarin



Meadow



Midnight



Ochre



Olive



Parchment



Pebble



Pewter



Saffron



Sky



Smoke

# ETCH PANEL VOLTA

Acoustics » Acoustic Panels



Slate



Storm



Sunshine



Tar



Twilight

## Zintra Timber Print



Eucalyptus



Ironbark



Merbau



Spotted Gum

## Zintra Premium Wood



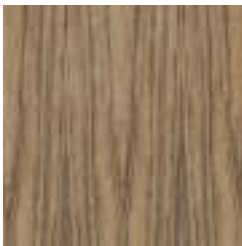
Knotty Pine



Maple



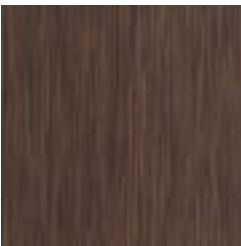
Poplar



Australian Walnut



Claro Walnut



Palm Wood



Rustic Walnut



Cherry



Euro Beech



Lacewood



Redwood

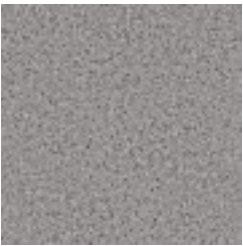


White Oak

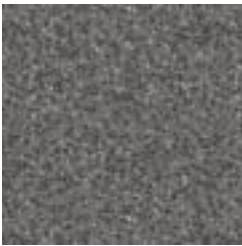
## Zintra Premium Material

# ETCH PANEL VOLTA

Acoustics » Acoustic Panels



Terrazzo Light



Terrazzo Medium



Terrazzo Dark



Travertine Light



Travertine Medium



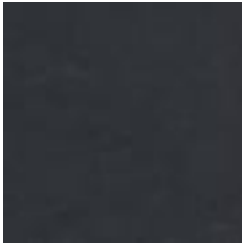
Travertine Dark



Shale Light



Shale Medium



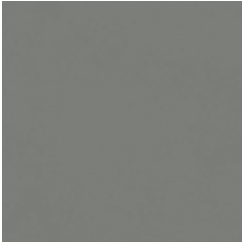
Shale Dark



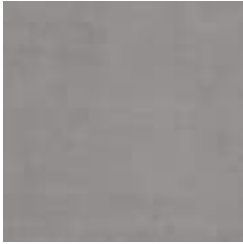
Raku Bone



Raku Luster



Raku Jade



Concrete Cast



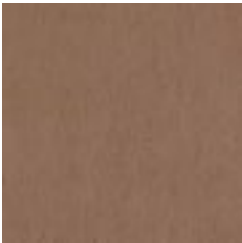
Concrete Polished



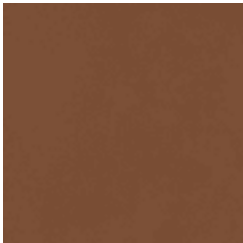
Concrete Dark Tint



Terracotta Sun  
Bleached



Terracotta Mission



Terracotta Antique