

# TEXTURE PANEL TESSAN

Acoustics » Acoustic Panels



Brand: **Zintra**

Collection: **Texture Panel**

1300 306 399

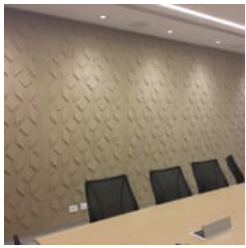
[info@baresque.com.au](mailto:info@baresque.com.au)

[baresque.com.au](http://baresque.com.au)

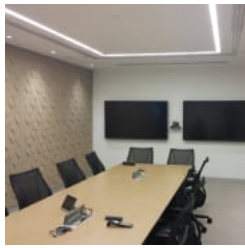
1 of 6

# TEXTURE PANEL TESSAN

Acoustics » Acoustic Panels



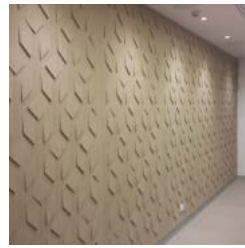
Texture Pattern  
Tessan



Texture Pattern  
Tessan Commercial



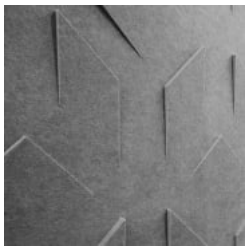
Texture Pattern  
Tessan Space Division



Texture Pattern  
Tessan Feature



Texture Pattern  
Tessan Feature Detail



Texture Tessan Detail  
2



Texture Tessan Detail



Texture Tessan Panel

# TEXTURE PANEL TESSAN

Acoustics » Acoustic Panels

Innovative 3-dimensional Zintra Texture Panel designs, from sleek lines to captivating patterns. Tessan adds depth and style while enhancing acoustics. Ideal for modern or classic settings in bustling public spaces.

✓ Acoustic

✓ Bleach Cleanable

✓ Easy Install

✓ Easy Clean

## Description

Zintra Textures offers subtle and engaging 3-dimensional panel designs. Each design incorporates aspects that reduce echoes by changing the angle of sound reflecting off the surface. It makes them ideal for noisy public spaces that need a little flair.

Zintra Acoustic Textures not only highlight the fantastic acoustic qualities of Zintra Acoustic Panel, but also the incredible fabrication capabilities Zintra has to offer. Zintra's wide range of designs and colours slip easily into classic or modern settings.

**Tessan:** The interplay of intersecting lines form a complex and intriguing composition. Transform your space into a haven of tactile elegance, the woven pattern adds texture and depth.

The subtle 3-dimensional relief of these designs not only adds dimension to your surrounding but also provides excellent acoustics. Zintra Textures, slip seamlessly into classic or modern settings, adding a touch of innovation and sophistication to noisy public spaces.

### Available in 15 designs

Carre | Cercles | Corbe | Diamont | Droit | Echelle | Etoile | Hexagone | Nenuphar | Paume | Signe | Tessan | Tissage | Trappe | Vague

Enhance your space with the innovative style of Zintra Textures.

Not suitable as a free standing product.

## Dimensions

1219mm (48") x 2743mm (108") x 24mm (1")

## Composition

Zintra Acoustic Panel - 100% Solution Dyed (Colour Through) Polyester

- 12mm (1/2") - Density 2.4 kg /m<sup>2</sup> 0.5 lb/ft<sup>2</sup>
- 24mm (1") - Density 3.6 kg /m<sup>2</sup> 0.75 lb/ft<sup>2</sup>

## Sustainability

Zintra is made from 100% recyclable materials.

- 60% post-consumer recycled content from PET bottles.
- 35% pre-consumer recycled content from PET chips
- 5% polylactic acid (PLA)

# TEXTURE PANEL TESSAN

Acoustics » Acoustic Panels

---

**Fire Rating**                    ASTM-E84 – Class A classification  
AS ISO 9705 – 2003 – Group 1 classification  
EN-13501 – B-s2-d0 classification

---

**Warranty**                      Visit FAQ for more details.

---

**Assembly & Delivery**       Ships Flat Pack

Go to the Technical Documents and download the Installation Guide for more details.

To install with an air gap, Zintra Texture Panel must be laminated to a solid backer. (MDF etc., to allow the push outs to extend from the panel) to allow for the air gap.

---

**Supplied As**                    Zintra Textures panel in selected pattern.

---

**Suggested Installation**        Go to Technical Documents and download the Installation Guide for more details.

---

**How to Specify**                1. Select Texture design  
2. Select Zintra Colour

---

**Care Instructions**              Vacuum to remove dust.

Dab Zintra with a damp clean cloth and mild solution of liquid detergent and warm water. Repeat using only clean water, then pat dry with a lint free cloth.

For difficult stains, use a solution of household bleach (10% bleach / 90% water). To remove the bleach, repeat using a clean, water dampened cloth, then pat dry.

Always test in an inconspicuous area first and if you don't see the expected results, contact us.

---

**Customisable**                    The Zintra Acoustic Solutions range is customisable to your project. Please get in touch with your local contact for details.

---

**Additional Comments**        NRC 0.45-0.90

---

# TEXTURE PANEL TESSAN

Acoustics » Acoustic Panels

## Colour & Finish Options

Zintra 12mm Solid PET



Bark



Brick



Cadet



Chambray



Cobalt



Ecru



Elderberry



Fossil



Frost



Grass



Greige



Ivory



Linen



Malachite



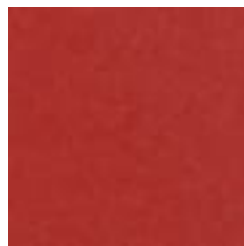
Mandarin



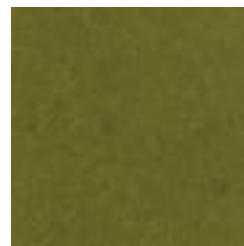
Meadow



Midnight



Ochre



Olive



Parchment



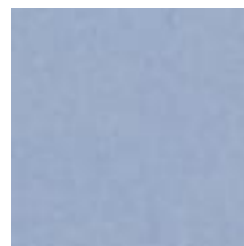
Pebble



Pewter



Saffron



Sky

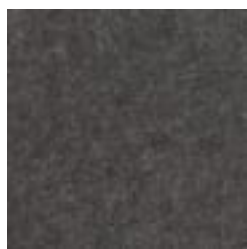


Smoke

# TEXTURE PANEL TESSAN

Acoustics » Acoustic Panels

---



Slate



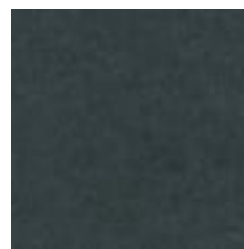
Storm



Sunshine



Tar



Twilight