

# PLAIN TILES TRIANGLE

Acoustics » Tiles



Brand: **Zintra**

Collections: **Plain Tiles**

Applications: **Walls**

1300 306 399

[info@baresque.com.au](mailto:info@baresque.com.au)

[baresque.com.au](http://baresque.com.au)

1 of 7

# PLAIN TILES TRIANGLE

Acoustics » Tiles

---



Plain Tile Triangle Detail

# PLAIN TILES TRIANGLE

Acoustics » Tiles

Transform your space with Zintra Plain Tiles, Triangle. Silence unwanted distractions and foster a serene and productive environment. Sold in sets.

✓ Acoustic

✓ Bleach Cleanable

✓ Easy Clean

✓ Easy Install

## Description

Explore endless design possibilities by mixing and matching Zintra Etch and Plain Tiles. With a diverse range of shapes and a vibrant colour palette, you have the freedom to select from a spectrum of hues, bringing your design vision to life and creating an acoustically minded space.

Experience Effortless Installation with our lightweight and seamless Zintra tiles, ensuring a smooth and hassle-free process. Whether installed wall to wall or as captivating feature artwork, they're the perfect fit for any commercial, educational, or hospitality setting, seamlessly merging aesthetics with acoustic excellence.

### Triangle\*

A captivating blend of geometric artistry and visual intrigue. The interlocking triangles, featured in this design showcase clean lines and balanced symmetry.

### Available in 14 designs (Includes Tablet – available in 3 sizes)

Battleaxe\* | Chevron\* | Diamond\* | Herringbone\* | Hexagon\* | Hourglass\* | Jigsaw | Parallelogram | Plank\* | Rectangle | Square\* | Tablet

\* Notes designs available in both Plain and Etch.

Tiles are sold in sets.

Not suitable as a free-standing product.

## Composition

Zintra Acoustic Panel - 100% Solution Dyed (Colour Through) Polyester

12mm (1/2") - Density 2.4 kg /m<sup>2</sup> 0.5 lb/ft<sup>2</sup>

## Sustainability

Zintra is made from 100% recyclable materials.

- 60% post-consumer recycled content from PET bottles.
- 35% pre-consumer recycled content from PET chips
- 5% polylactic acid (PLA)

## Dimensions

### Triangle:

16 Tiles / set, 2.9m<sup>2</sup> (31 SF)

600mm x (23.62") h x 600mm x (23.62") w

# PLAIN TILES TRIANGLE

Acoustics » Tiles

---

**Fire Rating**                    ASTM-E84 – Class A classification  
AS ISO 9705 – 2003 – Group 1 classification  
EN-13501 – B-s2-d0 classification

---

**Supplied As**                    • **Triangle:**

- 16 tiles / set, 2.9m<sup>2</sup> (31 SF)

---

**Assembly & Delivery**            • Ships Flat Packed.

- Supplied as a set of individual tiles.
- Arrange as required.

Go to the Technical Documents and download the Installation Guide for more details.

---

**Suggested Installation**            Go to Technical Documents and download the Installation Guide for more details.

---

**Care Instructions**                    Vacuum to remove dust.

Dab Zintra with a damp clean cloth and mild solution of liquid detergent and warm water. Repeat using only clean water, then pat dry with a lint free cloth.

For difficult stains, use a solution of household bleach (10% bleach / 90% water). To remove the bleach, repeat using a clean, water dampened cloth, then pat dry.

Always test in an inconspicuous area first and if you don't see the expected results, contact us.

---

**Warranty**                                Visit FAQ for more details.

---

**Customisable**                        The Zintra Acoustic Solutions range is customisable to your project. Please get in touch with your local contact for details.

---

**Additional Comments**            NRC 0.45-0.75

Directly Mounted

---

**How to Specify**                      1. Select Design

2. Select Zintra Colour

---

# PLAIN TILES TRIANGLE

Acoustics » Tiles

## Colour & Finish Options

Zintra 12mm Solid PET



Bark



Brick



Cadet



Chambray



Cobalt



Ecru



Elderberry



Fossil



Frost



Grass



Greige



Ivory



Linen



Malachite



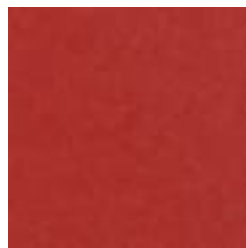
Mandarin



Meadow



Midnight



Ochre



Olive



Parchment



Pebble



Pewter



Saffron



Sky



Smoke

# PLAIN TILES TRIANGLE

Acoustics » Tiles



Slate



Storm



Sunshine



Tar



Twilight

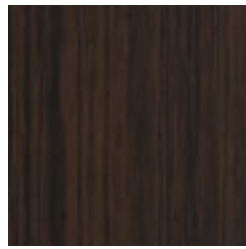
## Zintra Timber Print



Eucalyptus



Ironbark



Merbau



Spotted Gum

## Zintra Premium Material



Terrazzo Light



Terrazzo Medium



Terrazzo Dark



Travertine Light



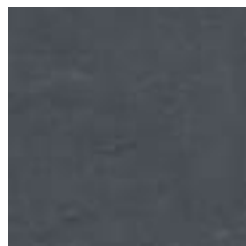
Travertine Medium



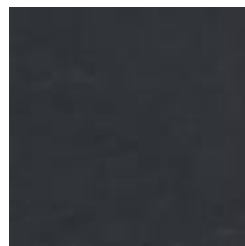
Travertine Dark



Shale Light



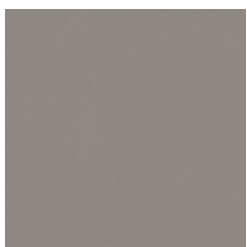
Shale Medium



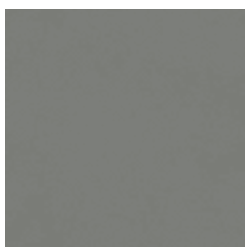
Shale Dark



Raku Bone



Raku Luster



Raku Jade



Concrete Cast



Concrete Polished



Concrete Dark Tint

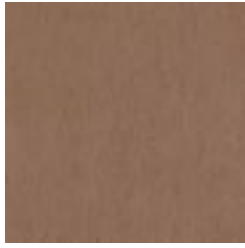
# PLAIN TILES TRIANGLE

Acoustics » Tiles

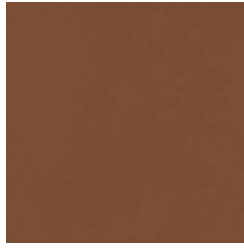
---



Terracotta Sun  
Bleached



Terracotta Mission



Terracotta Antique

## Zintra Premium Wood



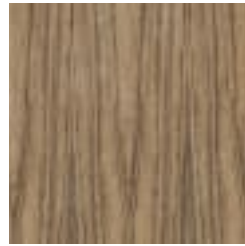
Knotty Pine



Maple



Poplar



Australian Walnut



Claro Walnut



Palm Wood



Rustic Walnut



Cherry



Euro Beech



Lacewood



Redwood



White Oak