

# PATTERN TILES LEAP

Acoustics » Tiles



Brand: **Zintra**

Collection: **Pattern Tiles**

1300 306 399

[info@baresque.com.au](mailto:info@baresque.com.au)

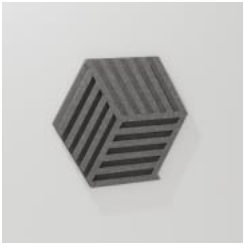
[baresque.com.au](http://baresque.com.au)

1 of 7

# PATTERN TILES LEAP

Acoustics » Tiles

---



Pattern Tile Leap  
Detail

# PATTERN TILES LEAP

Acoustics » Tiles

Unleash boundless creativity with Zintra Pattern Tiles, where patterns within patterns come to life. These multi-dimensional tiles ignite inspiration, with each twist revealing a new dimension of design. Let your creativity flourish with our Leap design.

## Description

Discover the versatility and creative potential of Zintra Pattern Tiles, where timeless elegance meets contemporary flair. Intricately cut designs adorn each tile, crafted from high-quality Zintra material and mounted onto a back panel in your choice of matching or contrasting Zintra Colour. This innovative approach introduces style, texture, contrast, and depth to your walls or ceilings, all while offering superior sound absorption for a harmonious ambiance.

### Leap

This captivating collection showcases a variety of pattern designs featuring bold and energetic elements, creating visually striking and vibrant patterns.

With a vast selection of 30 front and back Colours to choose from, allowing for thousands of unique combinations before even considering layout options. Elevate both visual interest and acoustics in your space with Zintra Pattern Tiles, available in 10 captivating designs (and multiple configurations), offered in single or dual layers.

**Available in 10 designs** single or double layer \*

Arch | Billet\* | Entwine | Groove\* | Halftone\* | Leap | Lotus | Pathway\* | Striae | Surge

Let your creativity flourish as you transform your environment into a masterpiece of design and sound with Zintra Pattern Tiles.

Sold in sets.

Not suitable as a free standing product.

## Dimensions

### Leap:

- 10 tiles / set, 2.1m<sup>2</sup> (22.8 SF)
- 495mm (19.47") h x 571mm (22.49") w

## Composition

Zintra Acoustic Panel - 100% Solution Dyed (Colour Through) Polyester

- 12mm (1/2") - Density 2.4 kg /m<sup>2</sup> 0.5 lb/ft<sup>2</sup>
- 24mm (1" ) - Density 3.6 kg /m<sup>2</sup> 0.75 lb/ft<sup>2</sup>

# PATTERN TILES LEAP

Acoustics » Tiles

---

## Sustainability

Zintra is made from 100% recyclable materials.

- 60% post-consumer recycled content from PET bottles.
  - 35% pre-consumer recycled content from PET chips
  - 5% polylactic acid (PLA)
- 

## Fire Rating

ASTM-E84 – Class A classification  
AS ISO 9705 – 2003 – Group 1 classification  
EN-13501 – B-s2-d0 classification

---

## Warranty

Visit FAQ for more details.

---

## Assembly & Delivery

Ships Flat Packed.

- Supplied as a set of individual tiles.
- Arrange as required.

Go to the Technical Documents and download the Installation Guide for more details.

---

## Supplied As

- Leap 10 tiles / set, 2.1m<sup>2</sup> (22.8 SF)
- 

## Suggested Installation

Go to Technical Documents and download the Installation Guide for more details.

---

## How to Specify

1. Select Design
  2. Select Zintra Colour
- 

## Care Instructions

Vacuum to remove dust.

Dab Zintra with a damp clean cloth and mild solution of liquid detergent and warm water. Repeat using only clean water, then pat dry with a lint free cloth.

For difficult stains, use a solution of household bleach (10% bleach / 90% water). To remove the bleach, repeat using a clean, water dampened cloth, then pat dry.

Always test in an inconspicuous area first and if you don't see the expected results, contact us.

---

# PATTERN TILES LEAP

Acoustics » Tiles

---

## Customisable

The Zintra Acoustic Solutions range is customisable to your project. Please get in touch with your local contact for details.

---

## Additional Comments

- NRC 0.45-0.75 Directly Mounted
  - Alpha-w Rating Directly Mounted 0.30-0.60
-



# PATTERN TILES LEAP

Acoustics » Tiles

## Colour & Finish Options

Zintra 12mm Solid PET



Bark



Brick



Cadet



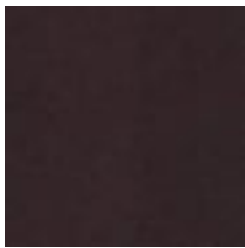
Chambray



Cobalt



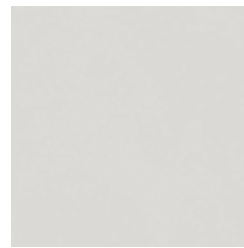
Ecru



Elderberry



Fossil



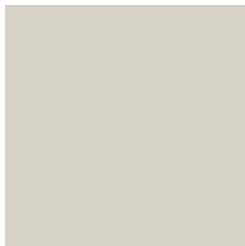
Frost



Grass



Greige



Ivory



Linen



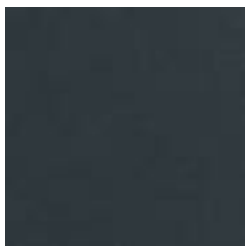
Malachite



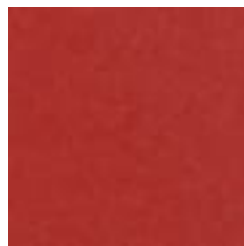
Mandarin



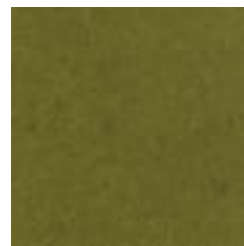
Meadow



Midnight



Ochre



Olive



Parchment



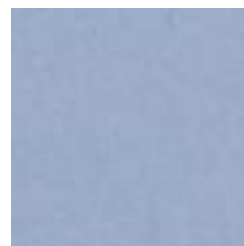
Pebble



Pewter



Saffron



Sky



Smoke

# PATTERN TILES LEAP

Acoustics » Tiles

---



Slate



Storm



Sunshine



Tar



Twilight

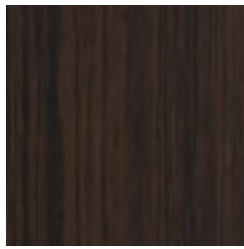
## Zintra Timber Print



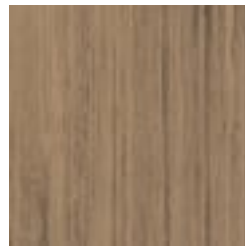
Eucalyptus



Ironbark



Merbau



Spotted Gum