

BEAMS CLOSED RAFTER

Acoustics » Acoustic Baffles



Brand: **Zintra**

Collections: **Beams**

Applications: **Ceilings**

1300 306 399

info@baresque.com.au

baresque.com.au

1 of 9

BEAMS CLOSED RAFTER

Acoustics » Acoustic Baffles



Beams Closed Rafter 5 x 5 Detail



Beams Closed Rafter 4 x 5 Detail



Beams Closed Rafter 3 x 5 Detail



Beams Closed Rafter 2 x 5 Detail

BEAMS CLOSED RAFTER

Acoustics » Acoustic Baffles



Beams Closed Rafter 1 x 5 Detail

BEAMS CLOSED RAFTER

Acoustics » Acoustic Baffles

Acoustic solutions reach new heights with Zintra Beams Closed Rafter, perfectly framed, Closed Rafters convey a sense of structure and architectural largesse. . Their modular nature brings both versatility and grandeur to your design.

✓ **Acoustic**

✓ **Bleach Cleanable**

✓ **Easy Clean**

✓ **Easy Install**

Description

Large spaces require acoustic solutions that match their scale. Zintra Beams collection address this need perfectly, offering substantial proportions that exude a sense of structure and architectural grandeur. Their modular design allows for a variety of configurations across a range of styles and sizes and includes connectors for effortless customization to suit any space.

There are 5 different geometric designs available: Open & Closed Rafter, Rectangular, Square and Parallel Beams, available in various sizes (please refer to the dimensions for design specific details). We even have a coffer available to suit open, closed and square designs for added acoustic comfort.

Closed Rafter

Similar to Open Rafters, but with a framed edge Closed Rafters offer modular configurations and lightweight acoustic solution. Ideal for creating progressive ceiling features or exposed architectural beams with superior acoustics. Additionally, optional coffer panels are available to further enhance its NRC rating.

Engineered for superior sound absorption, Zintra Beams function as porous absorbers across the entire frequency range. This significantly enhances the NRC rating, up to a maximum of 1.5.

Composition

Zintra Acoustic Panel - 100% Solution Dyed (Colour Through) Polyester
12mm (1/2") - Density 2.4 kg /m² 0.5 lb/ft²

Sustainability

Zintra is made from 100% recyclable materials.

- 60% post-consumer recycled content from PET bottles.
- 35% pre-consumer recycled content from PET chips
- 5% polylactic acid (PLA)

BEAMS CLOSED RAFTER

Acoustics » Acoustic Baffles

Dimensions

Closed Rafter

- 5 x 5 3124mm (123") w x 203mm (8") h x 3124mm (123") d
 - 4 x 5 2515mm (99") w x 203mm (8") h x 3124mm (123") d
 - 3 x 5 1905mm (75") w x 203mm (8") h x 3124mm (123") d
 - 2 x 5 1295mm (51") w x 203mm (8") h x 3124mm (123") d
 - 1 x 5 686mm (27") w x 203mm (8") h x 3124mm (123") d
-

Fire Rating

ASTM-E84 – Class A classification
AS ISO 9705 – 2003 – Group 1 classification
EN-13501 – B-s2-d0 classification

Supplied As

Flat Pack – Details per design:

Open Rafter

- 1 x Kit of chosen size including: Clear 24mm (1") Beams Clip
- 5 x 5 =144 | 4 x 5 =122 | 3 x 5 =100 | 2 x 5 =78 | 1 x 5 =56 (Clips)

Closed Rafter

- 1 x Kit of chosen size including: Clear 24mm (1") Beams Clip
- 5 x 5 =104 | 4 x 5 =86 | 3 x 5 =68 | 2 x 5 =48 | 1 x 5 =28 (Clips)

Parallel Beam

- 1 x Kit including: Clear 24mm (1") Beams Clip x 80

Rectangle Beam

- 1 x Kit including: Clear 24mm (1") Beams Clip x 20

Square Beam

- Set of 4
- 1 x Kit including: Clear 24mm (1") Beams Clip x 32

Coffers

- Set of 8 Coffers
-

BEAMS CLOSED RAFTER

Acoustics » Acoustic Baffles

Assembly & Delivery

Ships Flat Pack

- Assembly Required.
- Cable Suspension OR Unistrut. Refer preferred installation method Install Guide

Go to the Technical Documents and download the Installation Guide for more details.

Suggested Installation

Go to Technical Documents and download the Installation Guide for more details.

Care Instructions

Vacuum to remove dust.

Dab Zintra with a damp clean cloth and mild solution of liquid detergent and warm water. Repeat using only clean water, then pat dry with a lint free cloth.

For difficult stains, use a solution of household bleach (10% bleach / 90% water). To remove the bleach, repeat using a clean, water dampened cloth, then pat dry.

Always test in an inconspicuous area first and if you don't see the expected results, contact us.

Warranty

Visit FAQ for more details.

Customisable

The Zintra Acoustic Solutions range is customisable to your project. Please get in touch with your local contact for details.

Additional Comments

- NRC 1.0
 - NRC 1.5 With Coffers
-

How to Specify

1. Select design
 2. Select Size
 3. Select Zintra Colour
-

BEAMS CLOSED RAFTER

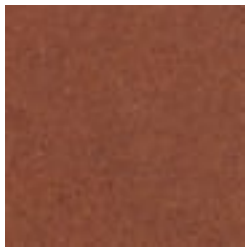
Acoustics » Acoustic Baffles

Colour & Finish Options

Zintra 12mm Solid PET



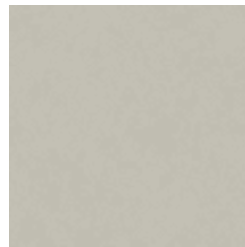
Bark



Brick



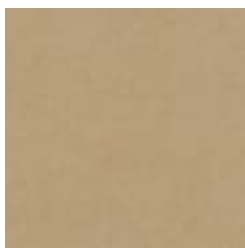
Cadet



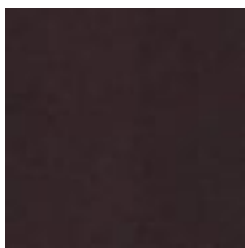
Chambray



Cobalt



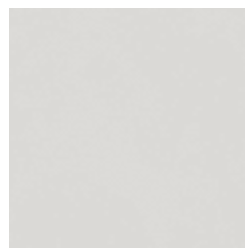
Ecru



Elderberry



Fossil



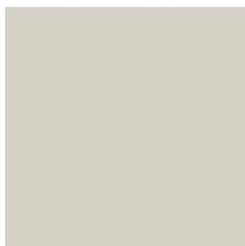
Frost



Grass



Greige



Ivory



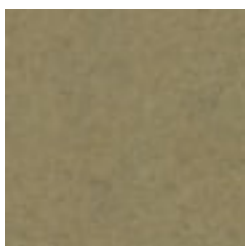
Linen



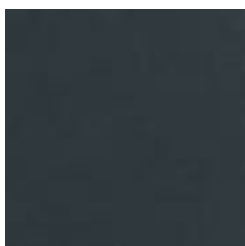
Malachite



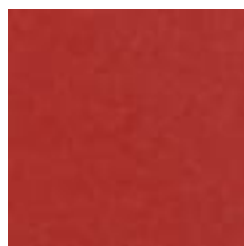
Mandarin



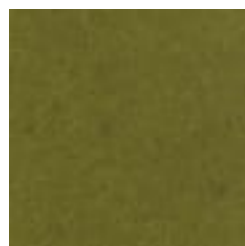
Meadow



Midnight



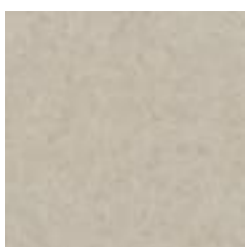
Ochre



Olive



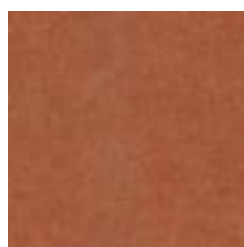
Parchment



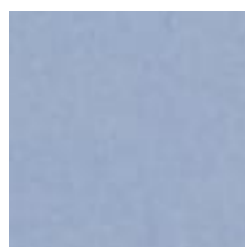
Pebble



Pewter



Saffron



Sky



Smoke

BEAMS CLOSED RAFTER

Acoustics » Acoustic Baffles



Slate



Storm



Sunshine



Tar

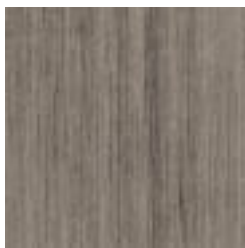


Twilight

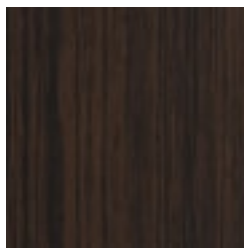
Zintra Timber Print



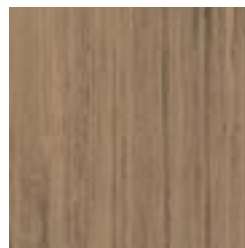
Eucalyptus



Ironbark



Merbau



Spotted Gum

Zintra Premium Material



Terrazzo Light



Terrazzo Medium



Terrazzo Dark



Travertine Light



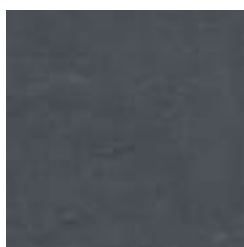
Travertine Medium



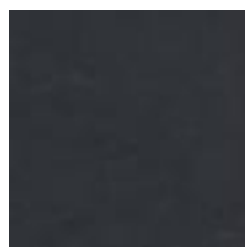
Travertine Dark



Shale Light



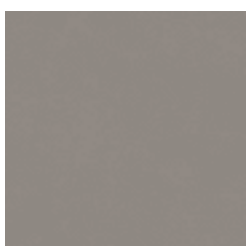
Shale Medium



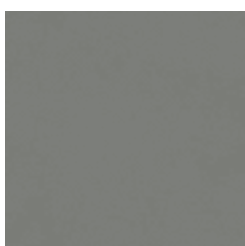
Shale Dark



Raku Bone



Raku Luster



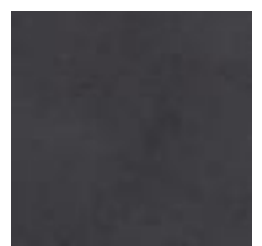
Raku Jade



Concrete Cast



Concrete Polished



Concrete Dark Tint

BEAMS CLOSED RAFTER

Acoustics » Acoustic Baffles



Terracotta Sun
Bleached



Terracotta Mission



Terracotta Antique

Zintra Premium Wood



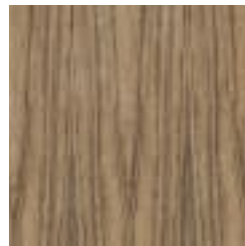
Knotty Pine



Maple



Poplar



Australian Walnut



Claro Walnut



Palm Wood



Rustic Walnut



Cherry



Euro Beech



Lacewood



Redwood



White Oak