

# BAFFLE SYSTEMS SQUARE

Acoustics » Acoustic Baffles



Brand: **Zintra**

Collection: **Baffle Systems**

# BAFFLE SYSTEMS SQUARE

Acoustics » Acoustic Baffles

---



Baffle Systems Square  
Education

# BAFFLE SYSTEMS SQUARE

Acoustics » Acoustic Baffles

Transform your space with Zintra Baffle System, Square design. Our high-performing baffles offer flexible and dynamic acoustic control, perfect for enhancing spacious environments

✓ Acoustic

✓ Bleach Cleanable

✓ Easy Clean

✓ Easy Install

## Description

A modern solution for acoustic control, Zintra Baffles are a prefabricated, ceiling mounted system. Showcasing Zintra's flexible characteristics and offering superior acoustic control, Zintra Acoustic Baffles are an innovative replacement to traditional mineral fibre lay systems.

By exposing the ceiling, Zintra baffles create an open and airy atmosphere while efficiently mitigating noise levels.

### Square

A modern, square-shaped baffles for clean lines and effective acoustic control in any space.

Easy to assemble, easy to install and available in a large array of designs, baffles are ideally suited to large noisy spaces in educational institutions, shopping centres, restaurants, and airports.

### Available in 10 designs

Bolt | Canyon | Gorge | Individual | Louvre | Ridge | Square | Swell | V-Fold | Wave

Combining a dynamic aesthetic appeal and acoustic performance these systems are supplied ready to install with minimum fuss. A great advantage of the vertical blades is the increased surface area that is presented to the room resulting in a greater absorption of sound compared to flat panels.

Zintra Baffles present a modern and budget-friendly solution for cultivating a tranquil and efficient workspace.

Choose from one of our 12 vibrant powdercoat colors (additional charge)

## Dimensions

Available in 2 sizes, Small Baffle and Large Baffle.

- **Small:** 1220mm (48") w x 1220mm (48") d
- **Large:** 1220mm (48") w x 2745mm (108") d

Available in 120mm (4.7") or 240mm (9.5") high

Both sizes are available with 122mm (4.8") gap (10 Baffles), 203mm (8") gap (6 Baffles), 300mm (12") gap (4 Baffles), overall dimension of the baffle system remains the same

## Composition

Zintra Acoustic Panel - 100% Solution Dyed (Colour Through) Polyester

12mm (1/2") - Density 2.4 kg /m<sup>2</sup> 0.5 lb/ft<sup>2</sup>

# BAFFLE SYSTEMS SQUARE

Acoustics » Acoustic Baffles

---

## Sustainability

Zintra is made from 100% recyclable materials.

- 60% post-consumer recycled content from PET bottles.
  - 35% pre-consumer recycled content from PET chips
  - 5% polylactic acid (PLA)
- 

## Fire Rating

ASTM-E84 – Class A classification  
AS ISO 9705 – 2003 – Group 1 classification  
EN-13501 – B-s2-d0 classification

---

## Warranty

Visit FAQ for more details.

---

## Assembly & Delivery

Ships Flat Packed.

Assemble your Baffle System then suspend from the ceiling using hanging hardware supplied.

Go to the Technical Documents and download the Installation Guide for more details.

---

## Supplied As

### Square: 10 Blades

- Depending on size:
  - 4 or 6 Adjustable Suspension Kit (ASK) | 2 or 3 x Aluminium Tube with Notches | 4 or 6 x Aluminium End Caps | 2 or 3 x 24mm (1") Zintra Connectors
- 

## Suggested Installation

Go to Technical Documents and download the Installation Guide for more details.

---

## How to Specify

1. Select Design
  2. Select Size
  3. Select Zintra Colour
-

# BAFFLE SYSTEMS SQUARE

Acoustics » Acoustic Baffles

---

## Care Instructions

Vacuum to remove dust.

Dab Zintra with a damp clean cloth and mild solution of liquid detergent and warm water. Repeat using only clean water, then pat dry with a lint free cloth.

For difficult stains, use a solution of household bleach (10% bleach / 90% water). To remove the bleach, repeat using a clean, water dampened cloth, then pat dry.

Always test in an inconspicuous area first and if you don't see the expected results, contact us.

---

## Customisable

Zintra Acoustic Panel - 100% Solution Dyed (Colour Through) Polyester

12mm (1/2") - Density 2.4 kg /m<sup>2</sup> 0.5 lb/ft<sup>2</sup>

---

## Additional Comments

NRC Rating

- Without Air Gap: Up to 0.95
  - With 24" (610mm) Air Gap: Up to 1.00
-

# BAFFLE SYSTEMS SQUARE

Acoustics » Acoustic Baffles

## Colour & Finish Options

Zintra 12mm Solid PET



Bark



Brick



Cadet



Chambray



Cobalt



Ecru



Elderberry



Fossil



Frost



Grass



Greige



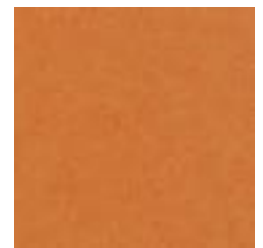
Ivory



Linen



Malachite



Mandarin



Meadow



Midnight



Ochre



Olive



Parchment



Pebble



Pewter



Saffron



Sky



Smoke

# BAFFLE SYSTEMS SQUARE

Acoustics » Acoustic Baffles



Slate



Storm



Sunshine



Tar



Twilight

## Zintra Timber Print



Eucalyptus



Ironbark



Merbau



Spotted Gum

## Zintra Premium Material



Terrazzo Light



Terrazzo Medium



Terrazzo Dark



Travertine Light



Travertine Medium



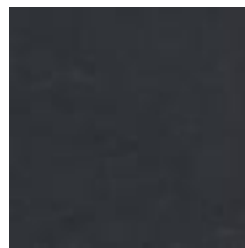
Travertine Dark



Shale Light



Shale Medium



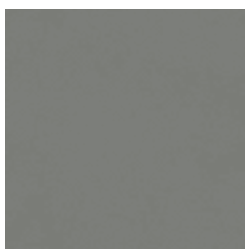
Shale Dark



Raku Bone



Raku Luster



Raku Jade



Concrete Cast



Concrete Polished



Concrete Dark Tint

# BAFFLE SYSTEMS SQUARE

Acoustics » Acoustic Baffles



Terracotta Sun  
Bleached



Terracotta Mission



Terracotta Antique

## Zintra Premium Wood



Knotty Pine



Maple



Poplar



Australian Walnut



Claro Walnut



Palm Wood



Rustic Walnut



Cherry



Euro Beech



Lacewood



Redwood

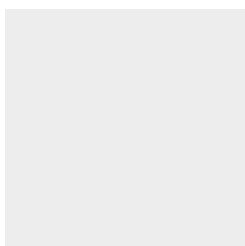


White Oak

## Powdercoat



Anodised Silver



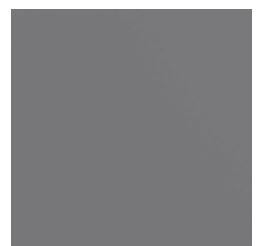
Bengal White



Denim



Fern



Gunmetal



# BAFFLE SYSTEMS SQUARE

Acoustics » Acoustic Baffles

---



Light Grey



Marigold



Matte Black



Spice



Tango



Teal



Terracotta