

# EMBOSS PANEL STITCHED

Acoustics » Acoustic Panels



Brand: **Zintra**

Collection: **Emboss Panel**

# EMBOSS PANEL STITCHED

Acoustics » Acoustic Panels

---



Emboss Panel Stitched  
Detail Elderberry



Emboss Panel Stitched  
Detail

# EMBOSS PANEL STITCHED

Acoustics » Acoustic Panels

Transform walls into a sophisticated backdrop with Zintra Emboss Panel Stitched. Its tufted, grid-like design adds tailored elegance and a warm, inviting atmosphere.

✓ Acoustic

✓ Bleach Cleanable

✓ Easy Clean

✓ Easy Install

## Description

Zintra Emboss Panels brings a touch of luxury to acoustic solutions, combining timeless craftsmanship with advanced technology. These tactile three-dimensional panels create an immersive experience that transforms the ambiance of any space. The warm heather of Zintra softens the environment, ensuring that even the most austere spaces feel inviting.

Designed for seamless installation, Zintra Emboss Panels can be installed both vertically or horizontally, offering versatile design possibilities. They provide more than just noise absorption—they tell a story with every surface. Their intricate patterns and dynamic visual effects shift with perspective, adding depth and warmth to any room, making conversations flow effortlessly without echoes or disturbances.

### Stitched

Designed to bring a touch of refined craftsmanship to any space, featuring a structured grid of small squares, each carefully framed with stitching around its edges. This design offers a soft, rounded aesthetic, perfect for creating a warm, inviting atmosphere in settings like hotel bed heads or feature walls.

The stitch detail, thoughtfully placed on all four sides, catches the light, adding depth and a sense of tailored elegance. With its tufted, headboard-like appearance, "Stitched" transforms walls into a sophisticated, textured backdrop that exudes comfort and style, making it an ideal choice for interiors that require both visual appeal and a sense of coziness.

### Available in 18 great designs.

Ascend | Celium | Constellation | Corduroy | Corduroy Fine | Cumulus | Damask | Jungle | Linked | Molecular | Rivulet | Sandglass | Scallop | Stitched | Tapestry | Tidal | Tufted | Woven

In hospitality, commercial, and care environments, Zintra Emboss Panels don't just absorb sound – they elevate spaces with their luxurious textures and calming designs, creating atmospheres that are as visually captivating as they are acoustically sound.

Please note: Zintra Emboss is suitable for single-sided applications only.

**Don't just design spaces. Craft experiences.**

## Dimensions

Available in 12mm (1/2")  
2743mm (108") x 1118mm (44")

"Emboss Panel patterns will align with a commercial tolerance of +/- 1mm. Panel thickness may vary by 15%. Pack as required to align face."

# EMBOSS PANEL STITCHED

Acoustics » Acoustic Panels

---

**Composition** Zintra Acoustic Panel - 100% Solution Dyed (Colour Through) Polyester  
12mm (1/2") - Density 2.4 kg /m<sup>2</sup> 0.5 lb/ft<sup>2</sup>

---

**Sustainability** Zintra is made from 100% recyclable materials.

- 60% post-consumer recycled content from PET bottles.
- 35% pre-consumer recycled content from PET chips
- 5% polylactic acid (PLA)

---

**Fire Rating** ASTM-E84 – Class A classification  
AS ISO 9705 – 2003 – Group 1 classification  
EN-13501 – B-s2-d0 classification

---

**Warranty** Visit FAQ for more details.

---

**Assembly & Delivery** Ships Flat Pack

Go to the Technical Documents and download the Installation Guide for more details.

---

**Supplied As** 1 x Emboss Panel in selected pattern

---

**Suggested Installation** Go to Technical Documents and download the Installation Guide for more details.

---

**Fabrication Techniques** Utility knife and CNC with oscillating knife.

---

**How to Specify**

1. Select Emboss design
2. Select Zintra Colour

---

# EMBOSS PANEL STITCHED

Acoustics » Acoustic Panels

---

## Care Instructions

Vacuum to remove dust.

Dab Zintra with a damp clean cloth and mild solution of liquid detergent and warm water. Repeat using only clean water, then pat dry with a lint free cloth.

For difficult stains, use a solution of household bleach (10% bleach / 90% water). To remove the bleach, repeat using a clean, water dampened cloth, then pat dry.

Always test in an inconspicuous area first and if you don't see the expected results, contact us.

---

## Additional Comments

NRC 0.35

---

# EMBOSS PANEL STITCHED

Acoustics » Acoustic Panels

## Colour & Finish Options

Zintra 12mm Solid PET



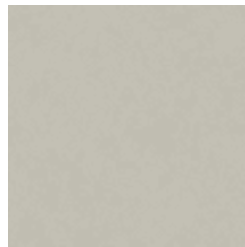
Bark



Brick



Cadet



Chambray



Cobalt



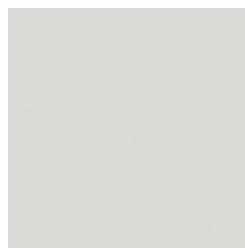
Ecru



Elderberry



Fossil



Frost



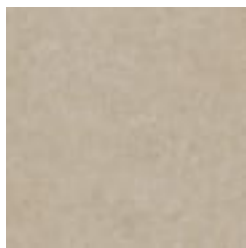
Grass



Greige



Ivory



Linen



Malachite



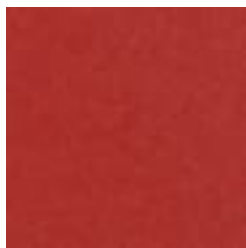
Mandarin



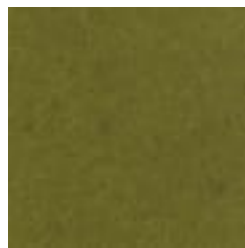
Meadow



Midnight



Ochre



Olive



Parchment



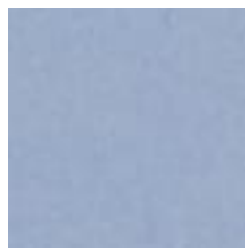
Pebble



Pewter



Saffron



Sky



Smoke

# EMBOSS PANEL STITCHED

Acoustics » Acoustic Panels



Slate



Storm



Sunshine



Tar



Twilight

## Zintra Timber Print



Eucalyptus



Ironbark

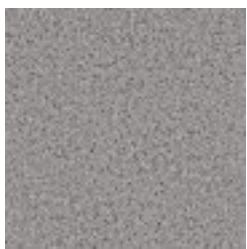


Merbau

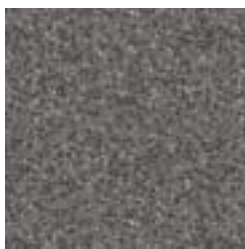


Spotted Gum

## Zintra Premium Material



Terrazzo Light



Terrazzo Medium



Terrazzo Dark



Travertine Light



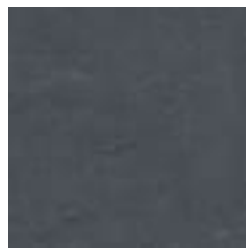
Travertine Medium



Travertine Dark



Shale Light



Shale Medium



Shale Dark



Raku Bone



Raku Luster



Raku Jade



Concrete Cast



Concrete Polished



Concrete Dark Tint



# EMBOSS PANEL STITCHED

Acoustics » Acoustic Panels

---



Terracotta Sun  
Bleached



Terracotta Mission



Terracotta Antique

## Zintra Premium Wood



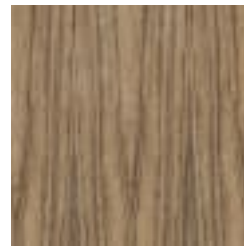
Knotty Pine



Maple



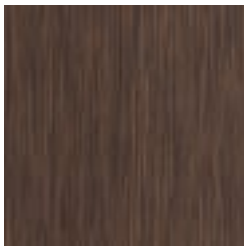
Poplar



Australian Walnut



Claro Walnut



Palm Wood



Rustic Walnut



Cherry



Euro Beech



Lacewood



Redwood



White Oak