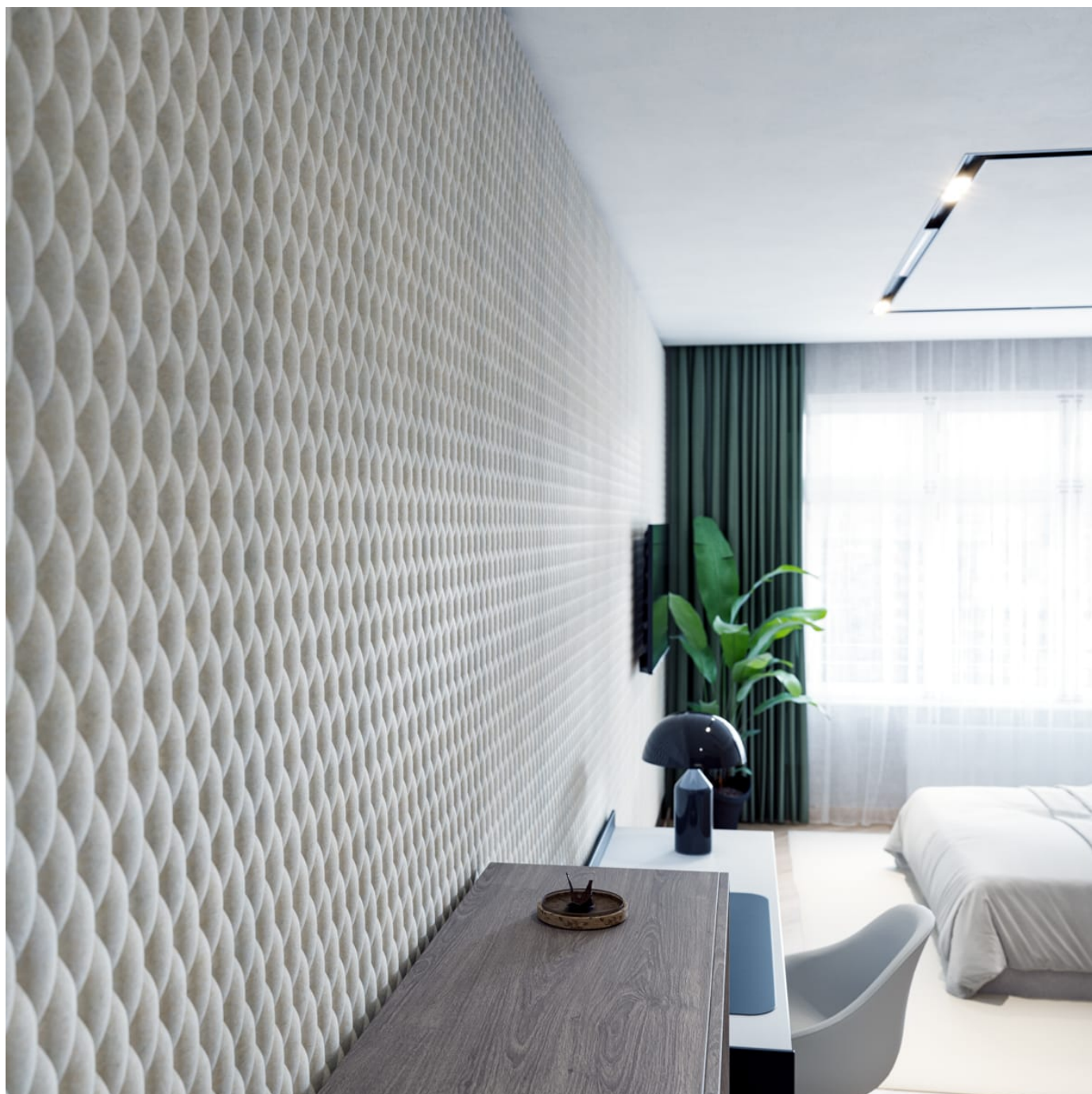


# EMBOSS PANEL TUFTED

Acoustics » Acoustic Panels



Brand: **Zintra**

Collections: **Emboss Panel**

Applications: **Walls**

1300 306 399

[info@baresque.com.au](mailto:info@baresque.com.au)

[baresque.com.au](https://baresque.com.au)

1 of 8

# EMBOSS PANEL TUFTED

**Acoustics** » Acoustic Panels

---



Emboss Panel Detail Ecrú



Emboss Panel Detail

# EMBOSS PANEL TUFTED

Acoustics » Acoustic Panels

Zintra Emboss Panel Tufted invites relaxation with its plush, pillowed texture. Experience luxurious comfort and tactile sophistication in any interior setting.

- ✓ Acoustic
- ✓ Bleach Cleanable
- ✓ Easy Clean
- ✓ Easy Install

Description	<p>Zintra Emboss Panels brings a touch of luxury to acoustic solutions, combining timeless craftsmanship with advanced technology. These tactile three-dimensional panels create an immersive experience that transforms the ambiance of any space. The warm heather of Zintra softens the environment, ensuring that even the most austere spaces feel inviting.</p> <p>Designed for seamless installation, Zintra Emboss Panels can be installed both vertically or horizontally, offering versatile design possibilities. They provide more than just noise absorption—they tell a story with every surface. Their intricate patterns and dynamic visual effects shift with perspective, adding depth and warmth to any room, making conversations flow effortlessly without echoes or disturbances.</p> <p><b>Tufted</b></p> <p>This design embodies the ultimate in comfort and luxury, with a pillowed, soft appearance that invites touch. Its plush, cushioned aesthetic evokes the sensation of sinking into a cloud. The design’s textured surface not only adds a layer of visual depth but also inspires a sense of warmth and coziness, transforming any environment into a haven of relaxation.</p> <p>With its luxe, pillowed look, "Tufted" seamlessly blends softness and sophistication, offering a tactile experience that elevates the feel of any interior.</p> <p><b>Available in 18 great designs.</b></p> <p>Ascend   Celium   Constellation   Corduroy   Corduroy Fine   Cumulus   Damask   Jungle   Linked   Molecular   Rivulet   Sandglass   Scallop   Stitched   Tapestry   Tidal   Tufted   Woven</p> <p>In hospitality, commercial, and care environments, Zintra Emboss Panels don't just absorb sound – they elevate spaces with their luxurious textures and calming designs, creating atmospheres that are as visually captivating as they are acoustically sound.</p> <p>Please note: Zintra Emboss is suitable for single-sided applications only.</p> <p><b>Don't just design spaces. Craft experiences.</b></p>
-------------	--

Composition	<p>Zintra Acoustic Panel - 100% Solution Dyed (Colour Through) Polyester</p> <p>12mm (1/2") - Density 2.4 kg /m² 0.5 lb/ft²</p>
-------------	---

# EMBOSS PANEL TUFTED

Acoustics » Acoustic Panels

## Sustainability

Zintra is made from 100% recyclable materials.

- 60% post-consumer recycled content from PET bottles.
- 35% pre-consumer recycled content from PET chips
- 5% polylactic acid (PLA)

## Dimensions

Available in 12mm (1/2")  
2743mm (108") x 1118mm (44")

"Emboss Panel patterns will align with a commercial tolerance of +/- 1mm. Panel thickness may vary by 15%. Pack as required to align face."

## Fire Rating

ASTM-E84 – Class A classification  
AS ISO 9705 – 2003 – Group 1 classification  
EN-13501 – B-s2-d0 classification

## Supplied As

1 x Emboss Panel in selected pattern

## Fabrication Techniques

Utility knife and CNC with oscillating knife.

## Assembly & Delivery

Ships Flat Pack

Go to the Technical Documents and download the Installation Guide for more details.

## Suggested Installation

Go to Technical Documents and download the Installation Guide for more details.

## Care Instructions

Vacuum to remove dust.

Dab Zintra with a damp clean cloth and mild solution of liquid detergent and warm water. Repeat using only clean water, then pat dry with a lint free cloth.

For difficult stains, use a solution of household bleach (10% bleach / 90% water). To remove the bleach, repeat using a clean, water dampened cloth, then pat dry.

Always test in an inconspicuous area first and if you don't see the expected results, contact us.

## Warranty

Visit FAQ for more details.

# EMBOSS PANEL TUFTED

**Acoustics** » Acoustic Panels

---

Additional Comments    NRC 0.35

---

How to Specify

1. Select Emboss design
2. Select Zintra Colour

---

# EMBOSS PANEL TUFTED

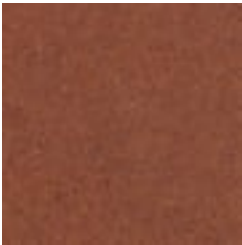
Acoustics » Acoustic Panels

## Colour & Finish Options

Zintra 12mm Solid PET



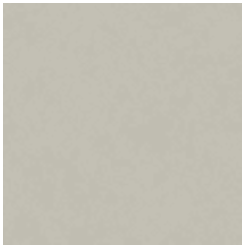
Bark



Brick



Cadet



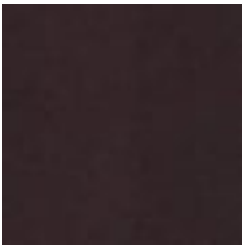
Chambray



Cobalt



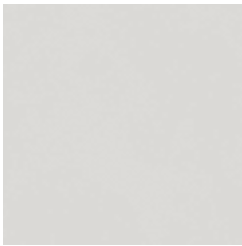
Ecru



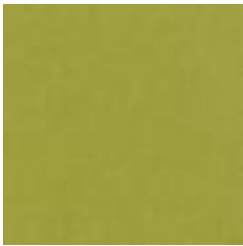
Elderberry



Fossil



Frost



Grass



Greige



Ivory



Linen



Malachite



Mandarin



Meadow



Midnight



Ochre



Olive



Parchment



Pebble



Pewter



Saffron



Sky



Smoke

# EMBOSS PANEL TUFTED

Acoustics » Acoustic Panels



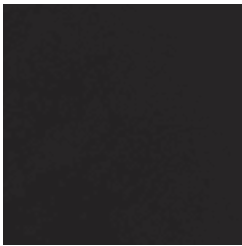
Slate



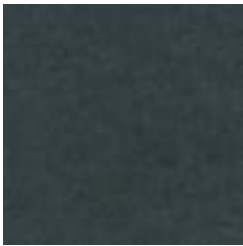
Storm



Sunshine



Tar



Twilight

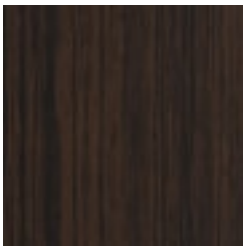
## Zintra Timber Print



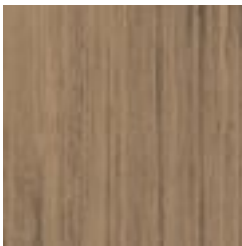
Eucalyptus



Ironbark



Merbau

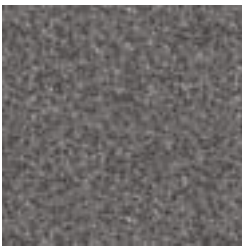


Spotted Gum

## Zintra Premium Material



Terrazzo Light



Terrazzo Medium



Terrazzo Dark



Travertine Light



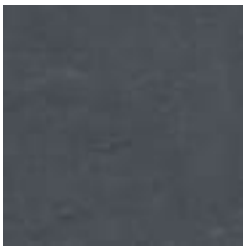
Travertine Medium



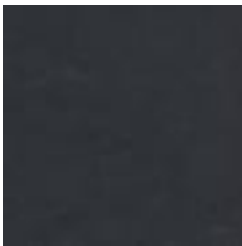
Travertine Dark



Shale Light



Shale Medium



Shale Dark



Raku Bone



Raku Luster



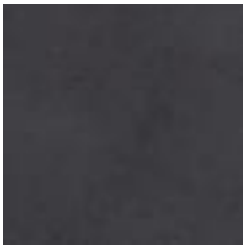
Raku Jade



Concrete Cast



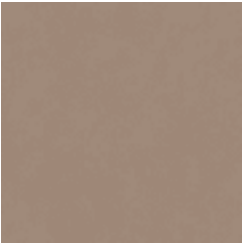
Concrete Polished



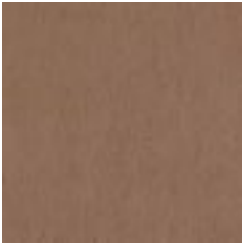
Concrete Dark Tint

# EMBOSS PANEL TUFTED

Acoustics » Acoustic Panels



Terracotta Sun  
Bleached



Terracotta Mission



Terracotta Antique

## Zintra Premium Wood



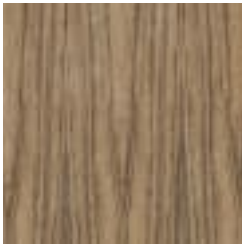
Knotty Pine



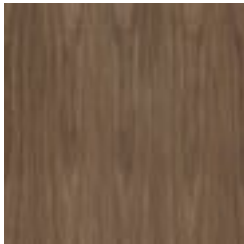
Maple



Poplar



Australian Walnut



Claro Walnut



Palm Wood



Rustic Walnut



Cherry



Euro Beech



Lacewood



Redwood



White Oak