

LENOX

Wallcoverings » Commercial Wallcoverings



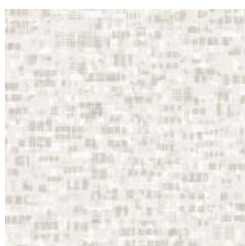
Brand: **Versa**

LENOX

Wallcoverings » Commercial Wallcoverings

COLOURWAY CARD

LENOX COLOURWAY
CARD



AVF26-029 CHIFFON



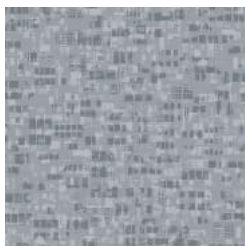
AVF26-050 STREET
CAR



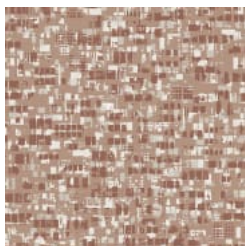
AVF26-106 OATMILK



AVF26-157 TAPESTRY



AVF26-336 HARBOUR



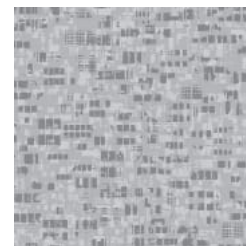
AVF26-463 RAWLIN



AVF26-572 FIRED
BRICK



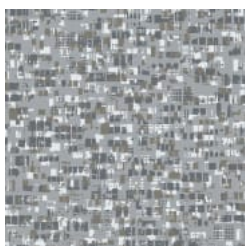
AVF26-729 OPTIMIST



AVF26-814
PAVEMENT



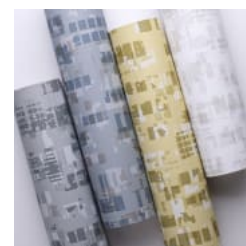
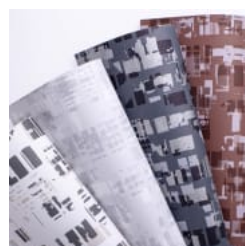
AVF26-814 PLATINUM



AVF26-835 HUDSON



AVF26-851 NIGHT
LIFE



LENOX

Wallcoverings » Commercial Wallcoverings

Lenox's dynamic pattern of abstract shapes and metallics evokes urban architecture in 12 modern neutrals and bold accents, adding movement to any space.

✓ Bleach Cleanable

✓ EPD Certified

✓ Low VOC

✓ HPD Certified

Description

Inspired by building architecture, Lenox is a dynamic pattern composed of shapes in varying scales, tones, and hints of metallics.

The overlapping abstracted motifs foster a sense of movement and provide an untraditional approach to a city scene.

The palette offers 12-skus including modern neutrals and bold, corporate-driven accents.

Roll Size

132/137cm x 27.4m - Available by the lineal metre.

Weight

452 g/m²

Composition

Vinyl face on a woven backing 20oz (452 g/m²)

Environmental Info

Formaldehyde free

Heavy metals free

Perfluorooctanoic acid free

No solvent inks

Low VOC emissions. Any VOCs dissipate quickly (faster than paint) through normal ventilation and have no recognized adverse impact on indoor air quality.

Durability means products do not need to be replaced regularly due to wear and tear and being cleanable, vinyl products are ideal for helping keep commercial environments clean of bacteria.

Baresque will only deal with vinyl manufacturers that comply with applicable state and federal regulations, provide a factory that is safe and clean for its employees to work in, recycle scrap and inks during the manufacturing process to minimize waste related to production.

Fire Rating

Tested in accordance with AS ISO 9705 2003 for the purpose of determining the Group Number classification as required by the Building Code of Australia for the control of fire spread on interior wall and ceiling linings.

Classification - Group 3

Specific Extinction - Less than 250m²/kg

Warranty 5-year warranty. Visit [baresque.com.au/warranty](https://www.baresque.com.au/warranty) for complete details.

Lead Time

- 2-weeks (approx.) from Wednesday, subject to stock availability.
- Additional 1-week for Western Australia.
- Express delivery is available subject to a surcharge. Contact Baresque for details and pricing.

Suggested Installation

Reverse hang / overlap and double cut.

Baresque recommends and supply Roman brand adhesives and primers.

Care Instructions

Use cloth with any of the following in preferred order of use:

- 1: Clear warm water
- 2: Mild solution of liquid detergent and warm water
- 3: Isopropyl Alcohol (a.k.a. rubbing alcohol)

Remove any detergent with a clean, damp cloth. Gently pat dry.

For more difficult stains, dampen a soft white cloth with a solution of household bleach (10% bleach / 90% water). Rub gently.

Rinse with a water dampened cloth to remove bleach concentration.

Do not use solvent based or concentrated abrasive cleaning agents, lacquer thinners or nail polish remover as these may cause discolouration over a period of time.

Always test in an inconspicuous area first.

If care instructions don't deliver the expected results, cease cleaning method immediately and contact Baresque for assistance.

LENOX

Wallcoverings » Commercial Wallcoverings

Colour & Finish Options