

# SAKURA VERSA

Wallcoverings » Commercial Wallcoverings



Brand: **Versa**

# SAKURA VERSA

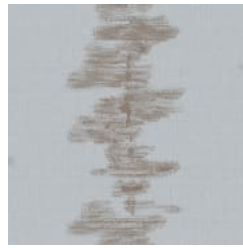
Wallcoverings » Commercial Wallcoverings

## COLOURWAY CARD

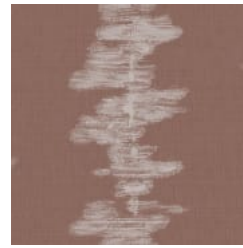
SAKURA VERSA  
TIPCARD



A217-040 VAPOR



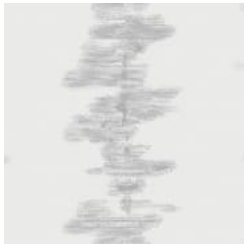
A217-372 CRESCENT



A217-558 HENNA



A217-820 PUFFIN



A217-844 WHISPER



# SAKURA VERSA

Wallcoverings » Commercial Wallcoverings

Sakura's bold, abstract shibori stripe on a silk texture comes in 5 striking colorways, complementing Hanami and Hanami Silk for a captivating, coordinated look.

✓ Bleach Cleanable

✓ EPD Certified

✓ Low VOC

✓ HPD Certified

**Description**

Large-scale shibori stripe, Sakura, is inspired by its companion designs, Hanami and Hanami Silk.

The bold and abstract motif provides a striking finish over the luminous silk texture.

The essence of the design is brought to life by the 5-sku palette's unexpected colour pairings. Coordinates with Hanami Silk and Hanami.

**Roll Size** 132/137cm x 27.4m - Available by the lineal metre.

**Weight** 452 g/m<sup>2</sup>

**Composition** Vinyl face on a woven backing 20oz (452 g/m<sup>2</sup>)

**Pattern Repeat Size** 44cm H

**Environmental Info**

Formaldehyde free

Heavy metals free

Perfluorooctanoic acid free

No solvent inks

Low VOC emissions. Any VOCs dissipate quickly (faster than paint) through normal ventilation and have no recognized adverse impact on indoor air quality.

Durability means products do not need to be replaced regularly due to wear and tear and being cleanable, vinyl products are ideal for helping keep commercial environments clean of bacteria.

Baresque will only deal with vinyl manufacturers that comply with applicable state and federal regulations, provide a factory that is safe and clean for its employees to work in, recycle scrap and inks during the manufacturing process to minimize waste related to production.

# SAKURA VERSA

Wallcoverings » Commercial Wallcoverings

---

**Fire Rating** Tested in accordance with AS ISO 9705 2003 for the purpose of determining the Group Number classification as required by the Building Code of Australia for the control of fire spread on interior wall and ceiling linings.

The result achieved was:  
Classification - Group 2  
Specific Extinction - Less than 250m<sup>2</sup>/kg

---

**Warranty** 5-year warranty. Visit [baresque.com.au/warranty](https://www.baresque.com.au/warranty) for complete details.

---

**Lead Time**

- 2-weeks (approx.) from Wednesday, subject to stock availability.
- Additional 1-week for Western Australia.
- Express delivery is available subject to a surcharge. Contact Baresque for details and pricing.

---

**Suggested Installation** Reverse hang / overlap and double cut.  
Baresque recommends and supply Roman brand adhesives and primers.

---

**Care Instructions** Use cloth with any of the following in preferred order of use:

- 1: Clear warm water
- 2: Mild solution of liquid detergent and warm water
- 3: Isopropyl Alcohol (a.k.a. rubbing alcohol)

Remove any detergent with a clean, damp cloth. Gently pat dry.

For more difficult stains, dampen a soft white cloth with a solution of household bleach (10% bleach / 90% water). Rub gently.

Rinse with a water dampened cloth to remove bleach concentration.

Do not use solvent based or concentrated abrasive cleaning agents, lacquer thinners or nail polish remover as these may cause discolouration over a period of time.

Always test in an inconspicuous area first.

If care instructions don't deliver the expected results, cease cleaning method immediately and contact Baresque for assistance.

---

# SAKURA VERSA

Wallcoverings » Commercial Wallcoverings

---

## Colour & Finish Options