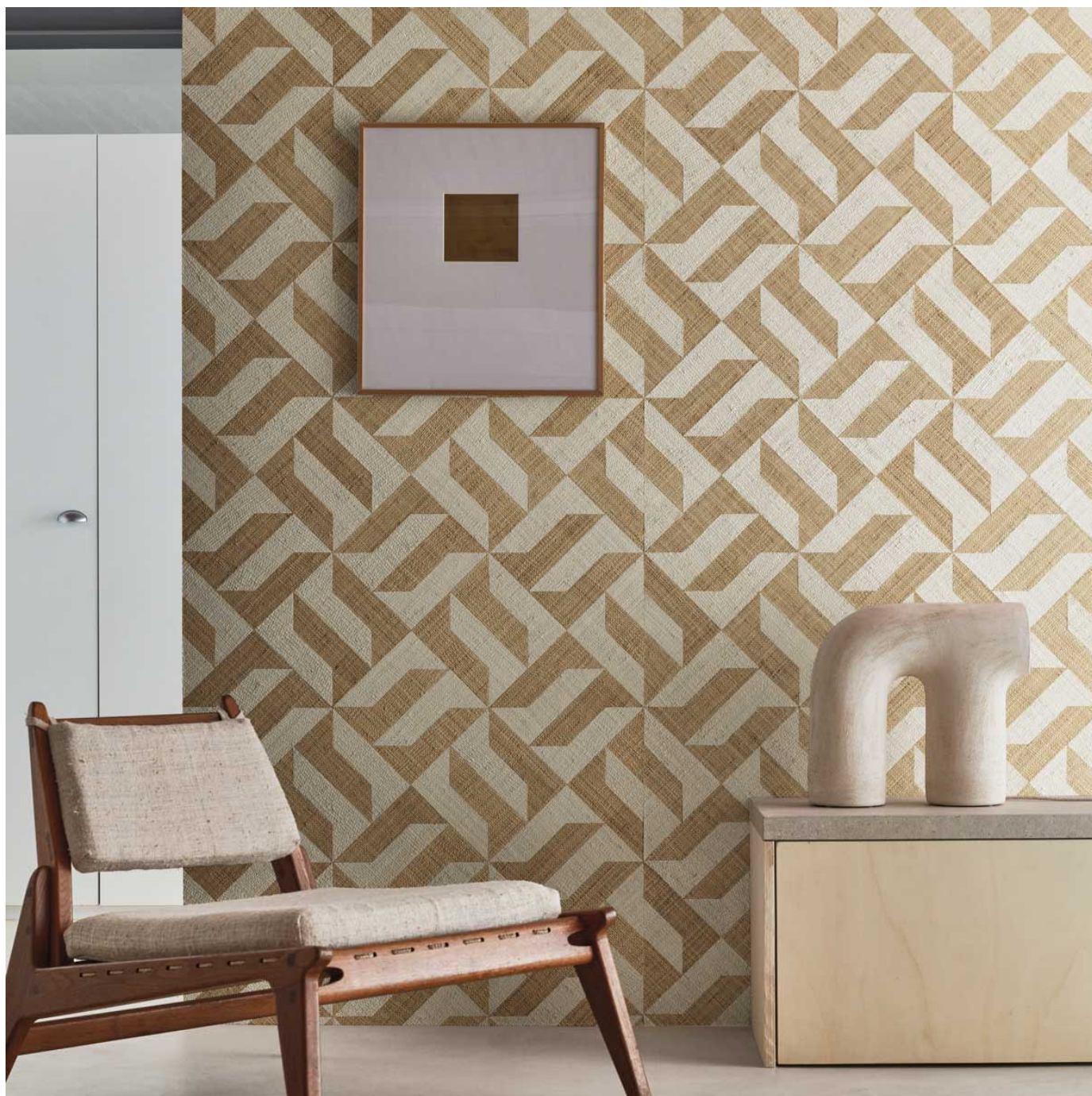


# INT25 COMPOUND

Wallcoverings » Decorative Wallcoverings



Brand: **Omexco**

Collections: **Intuition**

Applications: **Walls**

1300 306 399

[info@baresque.com.au](mailto:info@baresque.com.au)

[baresque.com.au](http://baresque.com.au)

1 of 5

# INT25 COMPOUND

Wallcoverings » Decorative Wallcoverings



# INT25 COMPOUND

Wallcoverings » Decorative Wallcoverings

This design is a raffia mosaic with geometric shapes. Available in 3 colourways.

✓ **Ecological**

✓ **Light Resistant**

✓ **Seamless Joins**

## Description

Omexco's latest collection uses a diverse range of natural materials. In this collection, we aim to emphasize the inherent richness of natural fibres in their purest form.

The interplay of weaves, the rhythm of the stripes, and the meticulously crafted geometric patterns have been carefully curated by our design studio. Their aim is to illuminate the myriad treasures these materials have to offer.

The natural materials of intuition provide a tactile delight, awakening the senses and introducing a fresh dimension to your living spaces. intuition embodies the selection of an aesthetic and sensorially captivating design.

## Composition

Patwork of handwoven raffia.

## Environmental Info

The materials contained in these wallcoverings are naturally occurring and renewable resources harvested from farms and coloured with water-based inks.

## Pattern Repeat Size

30 cm V

## Roll Size

91cm wide - Available by the lineal metre

## Weight

707 g/m<sup>2</sup>

## Lead Time

- 2-weeks (approx.) from Wednesday, subject to stock availability.
- Additional 1-week for Western Australia.
- Express delivery is available subject to a surcharge. Contact Baresque for details and pricing.

## Suggested Installation

Non-reverse hang/butt join.

This design is off set match.

Baresque recommends and supplies Roman brand adhesives and primers.

# INT25 COMPOUND

Wallcoverings » Decorative Wallcoverings

---

## Care Instructions

Always use a clean, white, soft cloth.

Remove liquid stains immediately using a dry cloth. Avoid hard scrubbing.

For tougher stains, dampen the cloth with warm water or a weak dilution of liquid detergent and apply being careful not to soak the material. Always work towards the centre of the stain so as to avoid further spreading.

Remove any detergent with a clean, damp cloth. Gently pat dry.

Always test in an inconspicuous area first.

---

## Warranty

2-year warranty. Visit [baresque.com.au/warranty](https://baresque.com.au/warranty) for complete details.

---

## Additional Comments

All products of this collection are natural products. Differences of colour and aspect between batches and even between strips are unavoidable. We cannot guarantee a perfect colour match between the sample in the pattern book and the delivered goods.

---



# INT25 COMPOUND

Wallcoverings » Decorative Wallcoverings

## Colour & Finish Options

COLOURWAY  
CARD

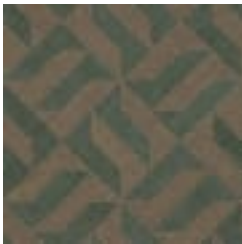
INTUTITION  
COLOURWAY CARD



INT251



INT252



INT253